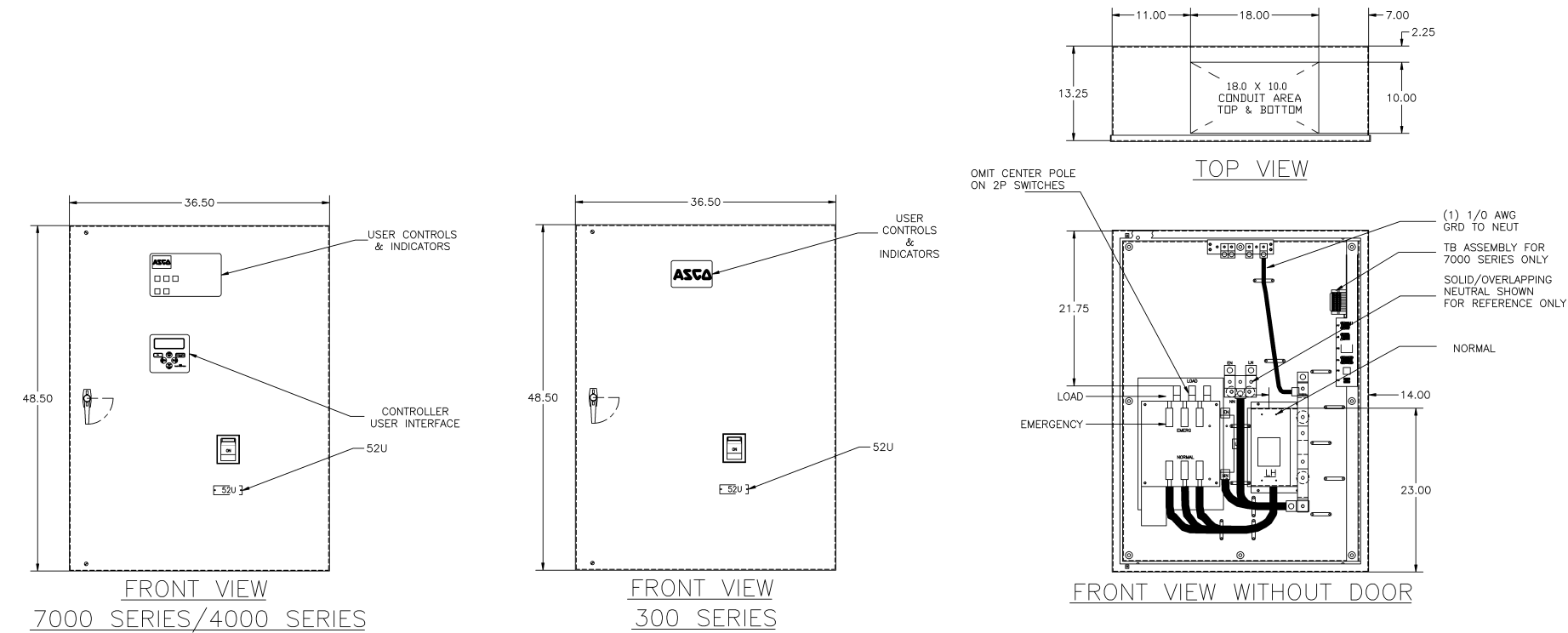


COMPOSITE OUTLINE FOR **ASCO**® 7000 SERIES (E7AUS), 4000 SERIES (E4AUS) & 300 SERIES (E3AUS) 250–400 AMPERE WITH SERVICE ENTRANCE BREAKER



- GENERAL NOTES**
- TYPE 1 WALL MOUNTED ENCLOSURE.
 - DOOR HAS KEY LOCKABLE HANDLE AND CAPTIVE SCREWS AS REQUIRED.
 - FINISH: ANSI 61 GRAY POLYESTER SEMI GLOSS ELECTROSTATIC POWDER.
 - RECOMMENDED CLEARANCES:
FRONT: 36 INCHES
 - ALL BUS IS SILVER-PLATED COPPER, BASED ON 1000A PER SQ. IN. DENSITY.
 - A FULL RATED NEUTRAL CONNECTION FOR EACH SOURCE AND THE LOAD IS OPTIONAL. WHEN PROVIDED IT IS IN ONE OF THE FOLLOWING FORMATS AS SPECIFIED BY THE CATALOG NO. NEUTRAL TYPE;
A. SOLID (COPPER BUS) NEUTRAL (PROVIDED STANDARD ON E3AUS)
C. OVERLAPPING NEUTRAL POLE
 - DESIGNED FOR FRONT ACCESS ONLY.
 - FOR SPECIFIED TRANSFER SWITCH, REFER TO OPERATOR'S MANUAL PROVIDED WITH UNIT.

- SPECIFICATIONS**
- SERVICE VOLTAGE:
SYSTEM RATING: 250 AMPS, 300 AMPS, 350 AMPS, 400 AMPS, 3Ø, 4W OR 1Ø, 3W.
GROUND BUS— 150 AMPS
SHORT CIRCUIT RATING— 35,000 RMS SYM AMPERES @ 480V.
THE EMERGENCY SOURCE INPUT MUST BE PROTECTED BY A REMOTE OVERCURRENT PROTECTION DEVICE AS LISTED ON THE MARKINGS ON THE TRANSFER SWITCH.
 - BATTERY VOLTAGE: N/A
 - NEUTRAL BUS: A FULL RATED NEUTRAL IS PROVIDED.
 - APPLICABLE LABELS: U.L. 1008— SUITABLE ONLY FOR USE AS SERVICE EQUIPMENT.

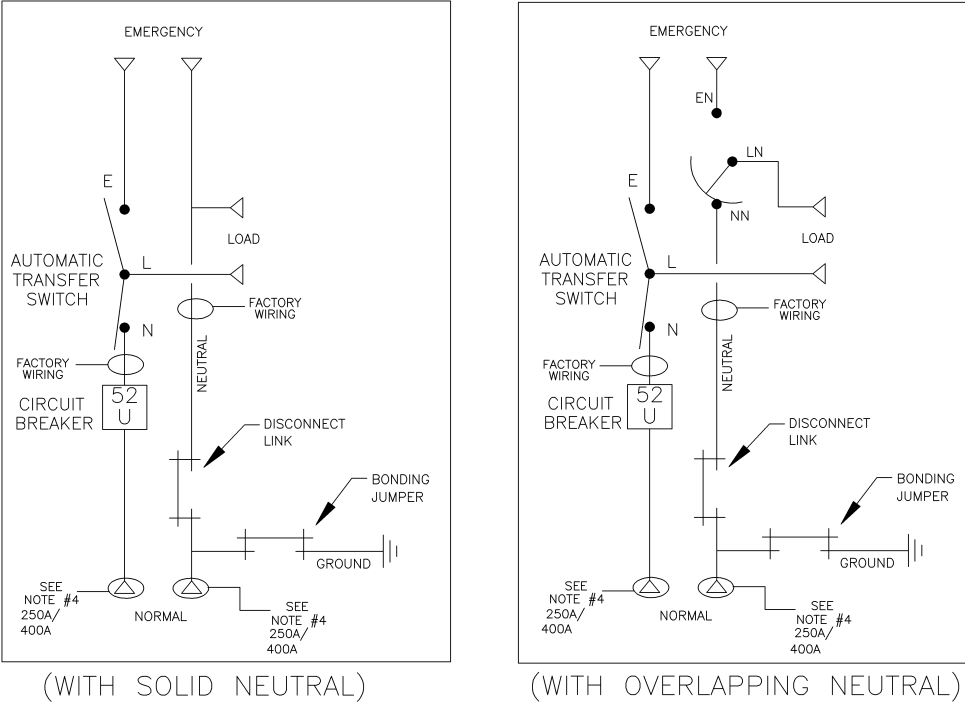
- NOTES 250 AMPS**
- SUPPLIED WITH STANDARD MECHANICAL (SCREW TYPE) LUGS ON THE EMERGENCY & LOAD BUS STABS. ONE (1) LUG PER PHASE AND NEUTRAL EACH SUITABLE FOR CONNECTION OF (1) #4 AWG TO 600MCM OR (2) 1/0 AWG TO 250MCM CU/AL CABLE (SEE NOTE "A" BELOW).
A. SUITABLE WIRE BENDING SPACE IS PROVIDED FOR UP TO TWO (2) 1/0 AWG CABLE PER TERMINAL PER NEC.
 - FACTORY WIRING: (1) 300MCM PER PHASE AND NEUTRAL
 - GROUND LUGS ARE PROVIDED STANDARD AS FOLLOWS;
(3) #6 AWG— 250 MCM CU/AL CABLE
 - NORMAL CABLE CONNECTIONS SUITABLE FOR (1) #1 AWG TO 600 MCM OR (2) #1 AWG TO 250 MCM PER Ø AND NEUTRAL.

- NOTES 300–400 AMPS**
- SUPPLIED WITH STANDARD MECHANICAL (SCREW TYPE) LUGS ON THE EMERGENCY & LOAD BUS STABS. ONE (1) LUG PER PHASE AND NEUTRAL EACH SUITABLE FOR CONNECTION OF (1) #4 AWG TO 600MCM OR (2) 1/0 AWG TO 250MCM CU/AL CABLE (SEE NOTE "A" BELOW).
A. SUITABLE WIRE BENDING SPACE IS PROVIDED FOR UP TO TWO (2) 1/0 AWG CABLE PER TERMINAL
 - FACTORY WIRING: (2) 3/0 PER PHASE AND NEUTRAL
 - GROUND LUGS ARE PROVIDED STANDARD AS FOLLOWS;
(3) #6 AWG— 250 MCM CU/AL CABLE
 - NORMAL CABLE CONNECTIONS SUITABLE FOR (1) #1 AWG TO 600 MCM OR (2) #1 AWG TO 250 MCM PER Ø AND NEUTRAL.

CIRCUIT BREAKER: ITEM 52U

SQUARE "D" 80% RATED, TYPE "LHL", 400AF/250AT, 400AF/300AT, 400AF/350AT, 400AF/400AT, MOLDED CASE CIRCUIT BREAKER, THERMAL MAGNETIC, TRIP SETTINGS.

ONE LINE DIAGRAMS



H	221371	DP	RN	1/13/09
G	ADDED "80% RATED"			
F	218000	AE	WK	1/17/08
E	216641	AE	WK	1/10/08
D	209449	KH	WK	8/17/06
C	207206	PBP	BK	01/12/06
B	203411	CC	BK	02/05
A	202191	MM	BK	10/21/04
	167216	MM	WK	06/03/04
	167025	MM	WK	05/17/04
	ISSUED			

PROJECT NAME: SERVICE ENTRANCE 250–400A, TYPE 1 ENCLOSURE	CHANGE LETTER	ECN NO.	BY	APP.	DATE
OUTLINE					
MOUNTING					
SERVICE ENTRANCE 250–400A					
E7AUS/E4AUS/E3AUS					
DRAWN BY	MM	DATE	05/17/04		
CHECKED	BK	DATE	05/17/04		
DRAFTING APPROVAL	WK	DATE	05/17/04		
FINAL APPROVAL					
MANUFACTURING TOLERANCES TO BE IN ACCORDANCE WITH ASCO PROCEDURE MP–1003. FOR PLASTIC PARTS SEE MP–1005.	ASSEM. REF. NO.				
PROPERTY OF ASCO POWER TECHNOLOGIES. USE PERMITTED FOR OUR WORK ONLY. ALL RIGHTS OF DESIGN OR INVENTION ARE RESERVED.	SCALE	1:1	ACAD	FILE	
SIZE	DWG. NO.	DS754576			
ASCO® ASCO POWER TECHNOLOGIES, L.P. FLORHAM PARK, NEW JERSEY 07932 U.S.A.	CHANGE LETTER	ECN NO.	221371	SHEET	1 OF 1