

# ASCO 185 SERIES AUTOMATIC POWER TRANSFER SWITCH RATED 260 & 400 AMPS, 240V SINGLE PHASE, 3 WIRE

NOTES:

- 1) Automatic Power Transfer Switch:  
ASCO E185, 2 pole, 260 & 400 amperes, 240 vac. Listed to UL 1008, Standard for Transfer Switching Equipment. For use on Optional Standby Systems as defined by NFPA 70 (National Electrical Code (NEC), Article 702).
- Transfer Controller - ASCO Group 4 Automatic Transfer Switch Controller including:  
(Refer to 185 Series Operator's Manual, PN 381333-319, supplied with the transfer switch for detailed information)
- User Controls & Status Indication  
Load on Preferred Source (Utility) LED indicator - green  
Load on Alternate Source (Generator) LED indicator - red  
Preferred Source (Utility) Acceptable LED indicator - green  
Alternate Source (Generator) Acceptable LED indicator - red  
Automatic Engine-Generator Exerciser (Setting & Engine Running) LED indicator  
Transfer Test membrane pushbutton  
Bypass Time Delay (active time delay or engine-generator exercise period) membrane pushbutton  
Set Engine Exerciser membrane pushbutton

**Time Delays**

- Override Momentary Preferred Source (Utility) Outages - Factory set at 3 seconds
- Transfer to Alternate Source (Generator) - Factory set at 10 seconds
- Override Momentary Alternate Source (Generator) Outages - Factory set at 4 seconds
- Retransfer to Preferred Source (Utility) - 5 minutes/fixed
- Engine-Generator Unloaded Running (Cooldown) Period - Factory set at 5 minutes

**Control Signals**

Engine-Generator Automatic Starting Controls - (1) form C contact

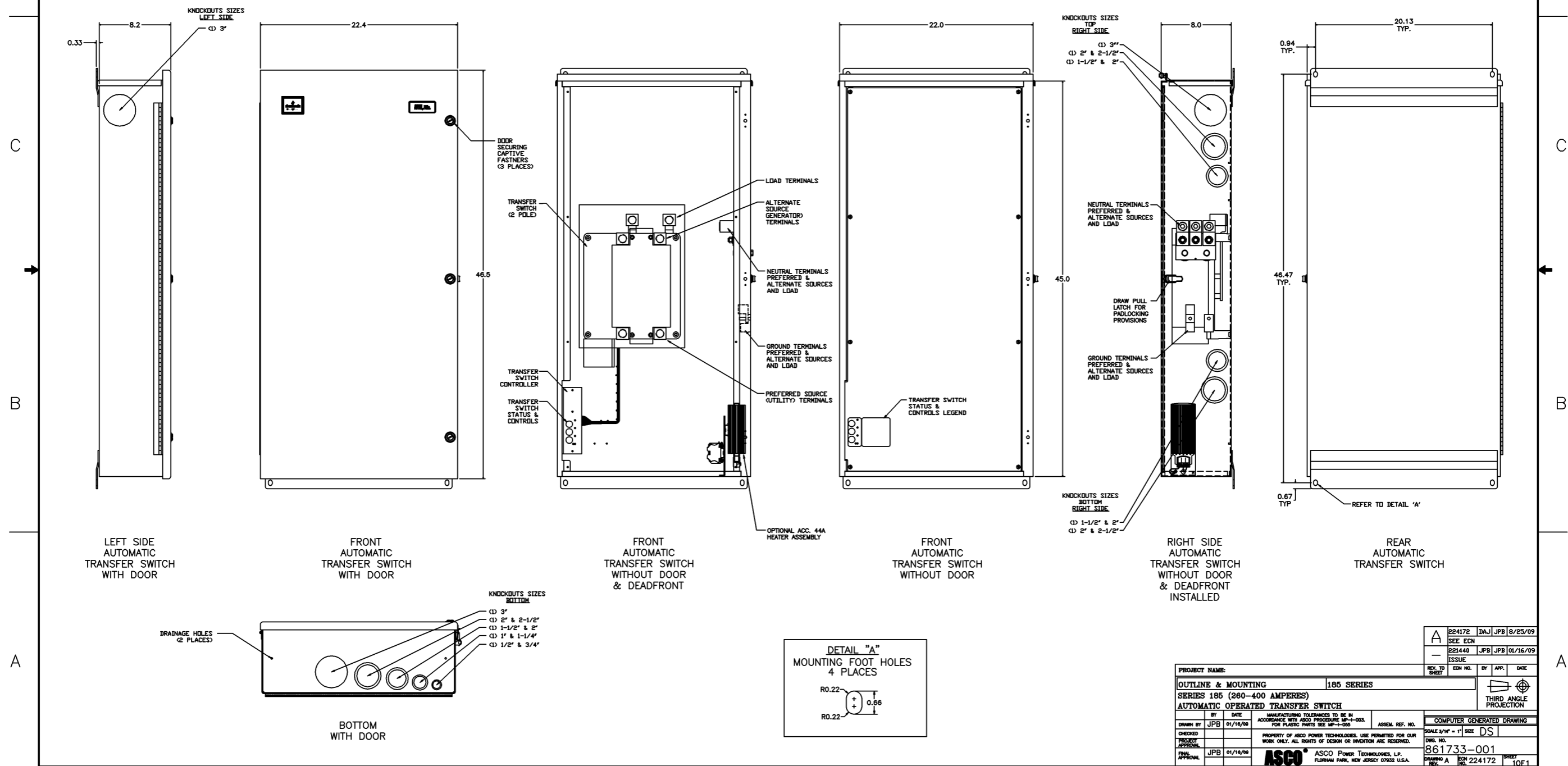
**Remote Controls (Using Customer Supplied Contacts)**

- Remote Test Feature
- Remote Test with Automatic Retransfer to Preferred Source (Utility) Feature
- Bypass Time Delay on Retransfer to Preferred Source (Utility) Feature

- 2) Enclosure: Listed to UL 50 Standard for Enclosures for Electrical Equipment, Type 3R Outdoor.  
Constructed of 0.102 thick Aluminum Alloy (5052-H32).  
Finish - RAL 7035 Light Gray Polyester Powder Coating.

3) Neutral & Equipment Ground Terminations - Provide for Preferred (Utility) & Alternate (Generator) Sources and Load.

- 4) Conductor Sizes - 260 to 400 amps: (1) 400 MCM - 600 MCM  
(2) 1/0 AWG - 250 MCM



PROJECT NAME:		185 SERIES	
OUTLINE & MOUNTING		SERIES 185 (260-400 AMPERES)	
AUTOMATIC OPERATED TRANSFER SWITCH		COMPUTER GENERATED DRAWING	
BY	DATE	ASSEM. REF. NO.	SCALE 3/16" = 1" SIZE DS
DRWN BY	JPB 01/16/09		
CHECKED		PROPERTY OF ASCO POWER TECHNOLOGIES. USE PERMITTED FOR OUR WORK ONLY. ALL RIGHTS OF DESIGN OR INVENTION ARE RESERVED.	DWG. NO. 861733-001
PROJECT APPROVAL			DRAWING REV. A
REV. APPROVAL	JPB 01/16/09	ASCO POWER TECHNOLOGIES, L.P. FLORHAM PARK, NEW JERSEY 07932 U.S.A.	REV. NO. 224172 SHEET 10F1