

ASCO 185 SERIES AUTOMATIC POWER TRANSFER SWITCHES RATED 260 & 400 AMPERES, 240V SINGLE PHASE, 3 WIRE

NOTES:

- Automatic Power Switch: ASCO E185, 2 pole, 260 & 400 amperes, 240 vac. Listed to UL 1008, Standard for Transfer Switching Equipment. For use on Optional Standby Systems as defined by NFPA 70 (National Electrical Code (NEC), Article 702.
- Transfer Controller - Group 4 Automatic Transfer Switch Controller including: (Refer to 185 Series Operator's Manual, PN 381333-319, supplied with the transfer switch for detailed information)

User Controls & Status Indication

- Load on Preferred Source (Utility) LED indicator - green
- Load on Alternate Source (Generator) LED indicator - red
- Preferred Source (Utility) Acceptable LED indicator - green
- Alternate Source (Generator) Acceptable LED indicator - red
- Automatic Engine-Generator Exerciser (Setting & Engine Running) LED indicator
- Transfer Test membrane pushbutton
- Bypass Time Delay (active time delay or engine-generator exercise period) membrane pushbutton
- Set Engine Exerciser membrane pushbutton

Time Delays

- Override Momentary Preferred Source (Utility) Outages - Factory set at 3 seconds
- Transfer to Alternate Source (Generator) - Factory set at 10 seconds
- Override Momentary Alternate Source (Generator) Outages - Factory set at 4 seconds
- Retransfer to Preferred Source (Utility) - 5 minutes/ fixed
- Engine-Generator Unloaded Running (Cooldown) Period - Factory set at 5 minutes

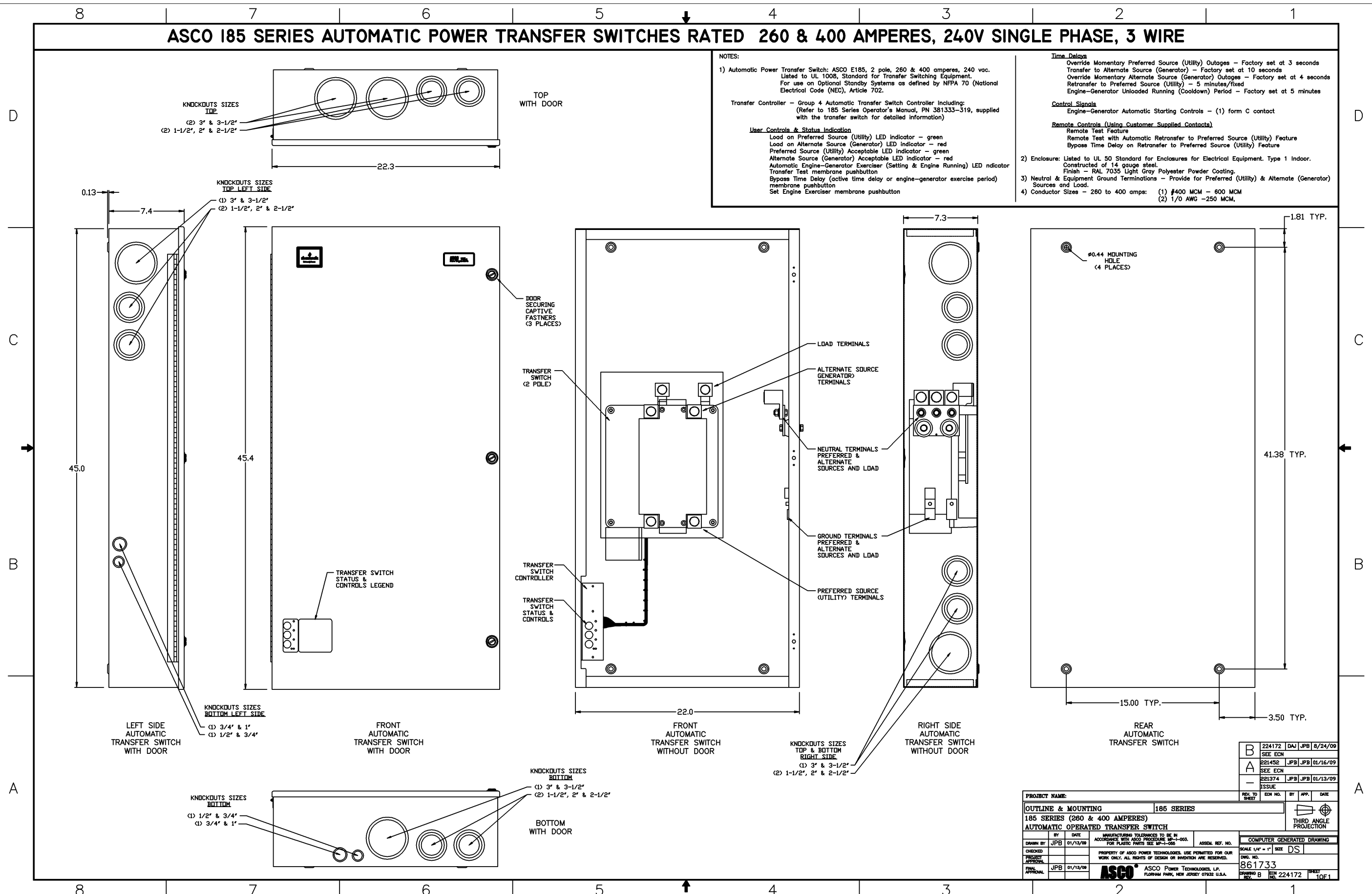
Control Signals

- Engine-Generator Automatic Starting Controls - (1) form C contact

Remote Controls (Using Customer Supplied Contacts)

- Remote Test Feature
- Remote Test with Automatic Retransfer to Preferred Source (Utility) Feature
- Bypass Time Delay on Retransfer to Preferred Source (Utility) Feature

- Enclosure: Listed to UL 50 Standard for Enclosures for Electrical Equipment, Type 1 Indoor. Constructed of 14 gauge steel. Finish - RAL 7035 Light Gray Polyester Powder Coating.
- Neutral & Equipment Ground Terminations - Provide for Preferred (Utility) & Alternate (Generator) Sources and Load.
- Conductor Sizes - 260 to 400 amps: (1) #400 MCM - 600 MCM (2) 1/0 AWG - 250 MCM.



PROJECT NAME:		185 SERIES	
OUTLINE & MOUNTING		185 SERIES (260 & 400 AMPERES)	
AUTOMATIC OPERATED TRANSFER SWITCH		THIRD ANGLE PROJECTION	
REV. TO SHEET	ECH. NO.	BY	APP. DATE
B	224172	DAW	JPB 8/24/09
A	221452	JPB	JPB 01/16/09
-	221374	JPB	JPB 01/13/09
ISSUE			
PROPERTY OF ASCO POWER TECHNOLOGIES. USE PERMITTED FOR OUR WORK ONLY. ALL RIGHTS OF DESIGN OR INVENTION ARE RESERVED.		COMPUTER GENERATED DRAWING	
SCALE 1/4" = 1"	SIZE DS	DWG. NO. 861733	
DRAWING B		ECH. NO. 224172 SHEET 10F1	