

OUTLINE FOR ASCO® 300 SERIES TRANSFER SWITCHES (E3ATS/E3NTS) 260-400 AMPERES, TYPE 3R/4/4X/12 ENCLOSURE

GENERAL NOTES

1. TYPE 3R/4/4X/12 WALL MOUNTED ENCLOSURE. CONSTRUCTED IN ACCORDANCE WITH UL STANDARDS 50 & 50E.
2. STANDARD FINISH TYPE 3R/4/12: ANSI 61 GRAY. TYPE 4X FINISH UNPAINTED, SMOOTH BRUSHED, STAINLESS STEEL (TYPE 304).
3. DOOR HINGED ON RIGHT SIDE. PADLOCK HASP LEFT SIDE. PLATED DOOR CLAMPS.
4. FULL WIRING GUTTERS AT TOP & BOTTOM. NO KNOCKOUTS PROVIDED.
5. TERMINALS – SCREW TYPE LUGS FOR EXTERNAL POWER CONNECTIONS. RANGE: (2) #1/0 AWG TO 250 MCM OR (1) #4 AWG TO 600 MCM
6. OVERALL DIMENSIONS ARE OUTSIDE MEASUREMENTS.
7. REFER TO THE OPERATOR'S MANUAL PROVIDED WITH EACH UNIT BEFORE INSTALLING AND OPERATING THE SWITCH.
8. NEUTRAL CONFIGURATIONS:

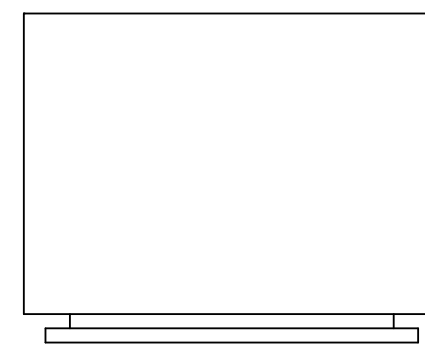
AN OPTIONAL FULL RATED NEUTRAL CONFIGURATION FOR EACH SOURCE AND THE LOAD MAY BE PROVIDED. WHEN EQUIPPED IT IS IN ONE OF THE FOLLOWING FORMATS AS SPECIFIED BY THE CATALOG NUMBER NO. NEUTRAL TYPE:

- (A) SOLID (COPPER BUS) NEUTRAL
- (B) SWITCHED NEUTRAL POLE
- (C) OVERLAPPING NEUTRAL POLE

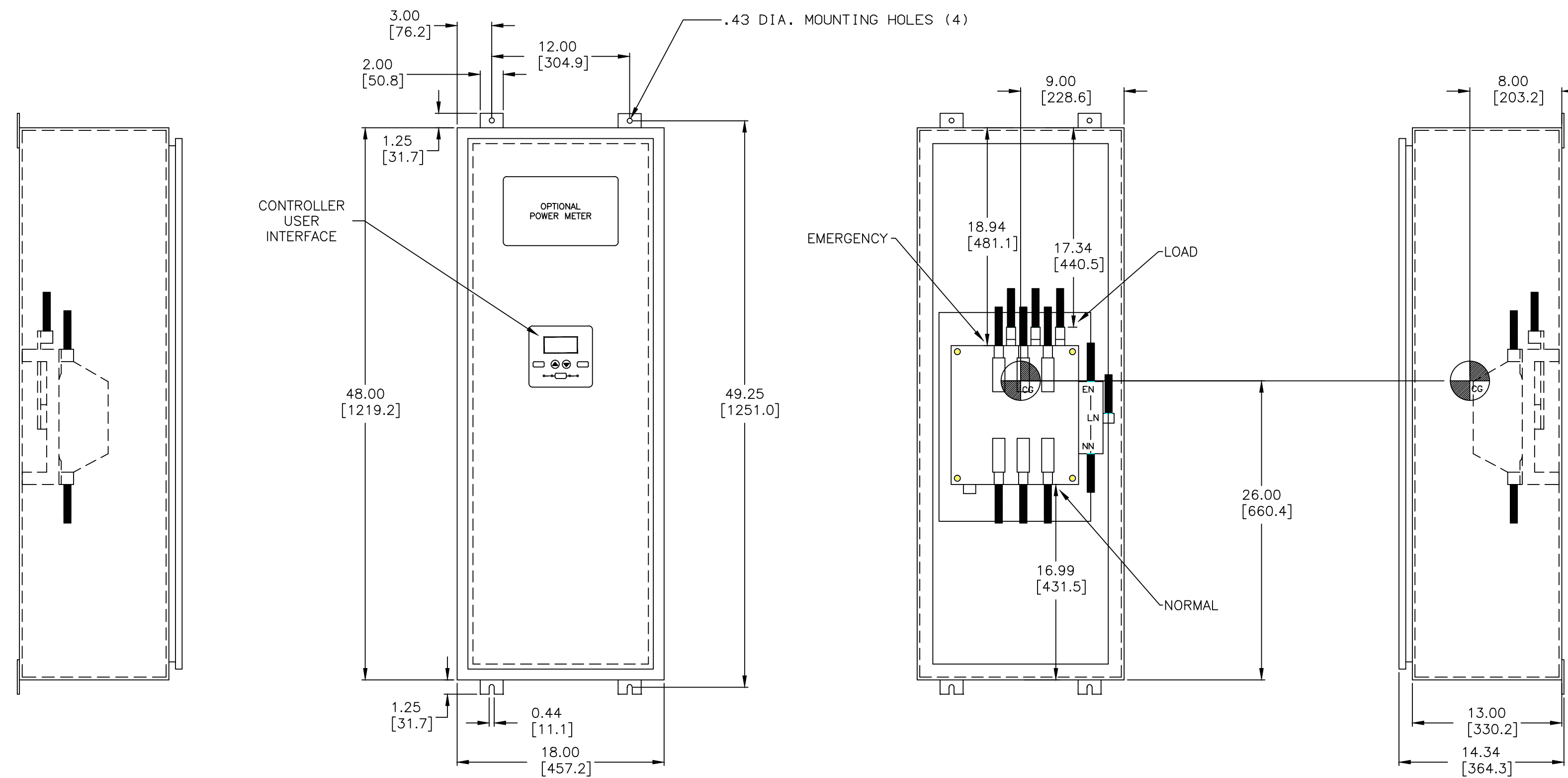
9.  CENTER OF GRAVITY

UNIT WEIGHT, LBS (KG)

AMP SIZE	POLES	WEIGHT
260A TO 400A	2	153 (69)
	A2, C2	161 (73)
	3	161 (73)
	A3, C3	169 (77)



TOP VIEW

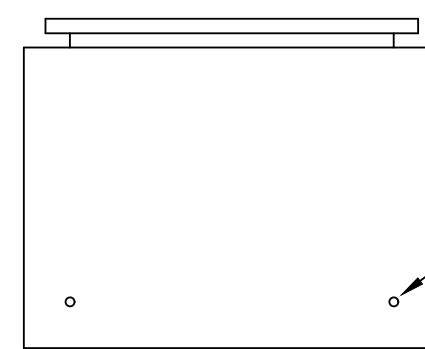


LEFT SIDE

FRONT VIEW
WITH DOOR


FRONT VIEW
WITHOUT DOOR

RIGHT SIDE



BOTTOM VIEW

REMOVING KNOCKOUTS CONVERTS THE TYPE 12 ENCLOSURE TO TYPE 3R

PROJECT NAME:		245220	BWM	SDH	11/4/13
COMPOSITE OUTLINE		ISSUE	REV. TO SHEET	ECN. NO.	BY APP. DATE
300 SERIES, E3ATS/E3NTS RATED 260-400 AMPERES		 THIRD ANGLE PROJECTION			
TYPE 3R/4/4X/12 ENCLOSURE					
DRAWN BY	BY	DATE	MANUFACTURING TOLERANCES TO BE IN ACCORDANCE WITH ASCO PROCEDURE MP-1-003. FOR PLASTIC PARTS SEE MP-1-055.		
CHECKED	ASSEM. REF. NO.		PROPERTY OF ASCO POWER TECHNOLOGIES. USE PERMITTED FOR OUR WORK ONLY. ALL RIGHTS OF DESIGN OR INVENTION ARE RESERVED.		
PROJECT APPROVAL			COMPUTER GENERATED DRAWING		
FINAL APPROVAL			SCALE 1/8" = 1" SIZE	DS	
			DWG. NO. 978732-001		
			DRAWING REV. NO. 245220 SHEET 1 OF 1		



ASCO POWER TECHNOLOGIES, L.P.
FLORHAM PARK, NEW JERSEY 07932 U.S.A.