

# OUTLINE FOR ASCO® 300 SERIES TRANSFER SWITCHES (E3ATS/E3NTS) 260-400 AMPERES, TYPE 3R/4/4X/12 ENCLOSURE

## GENERAL NOTES

1. TYPE 3R/4/4X/12 WALL MOUNTED ENCLOSURE. CONSTRUCTED IN ACCORDANCE WITH UL STANDARDS 50 & 50E.
2. STANDARD FINISH TYPE 3R/4/12: ANSI 61 GRAY. TYPE 4X FINISH UNPAINTED, SMOOTH BRUSHED, STAINLESS STEEL (TYPE 304).
3. DOOR HINGED ON RIGHT SIDE. PADLOCK HASP LEFT SIDE. PLATED DOOR CLAMPS.
4. FULL WIRING GUTTERS AT TOP & BOTTOM. NO KNOCKOUTS PROVIDED.
5. TERMINALS – SCREW TYPE LUGS FOR EXTERNAL POWER CONNECTIONS. RANGE: (2) #1/0 AWG TO 250 MCM OR (1) #4 AWG TO 600 MCM
6. OVERALL DIMENSIONS ARE OUTSIDE MEASUREMENTS.
7. REFER TO THE OPERATOR'S MANUAL PROVIDED WITH EACH UNIT BEFORE INSTALLING AND OPERATING THE SWITCH.
8. NEUTRAL CONFIGURATIONS:

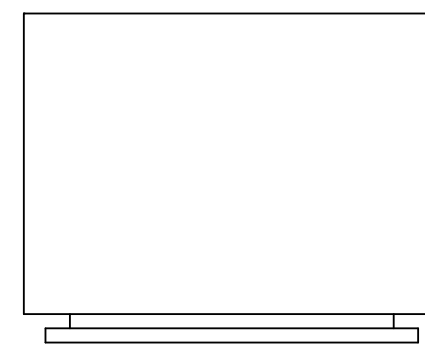
AN OPTIONAL FULL RATED NEUTRAL CONFIGURATION FOR EACH SOURCE AND THE LOAD MAY BE PROVIDED. WHEN EQUIPPED IT IS IN ONE OF THE FOLLOWING FORMATS AS SPECIFIED BY THE CATALOG NUMBER NO. NEUTRAL TYPE:

- (A) SOLID (COPPER BUS) NEUTRAL
- (B) SWITCHED NEUTRAL POLE
- (C) OVERLAPPING NEUTRAL POLE

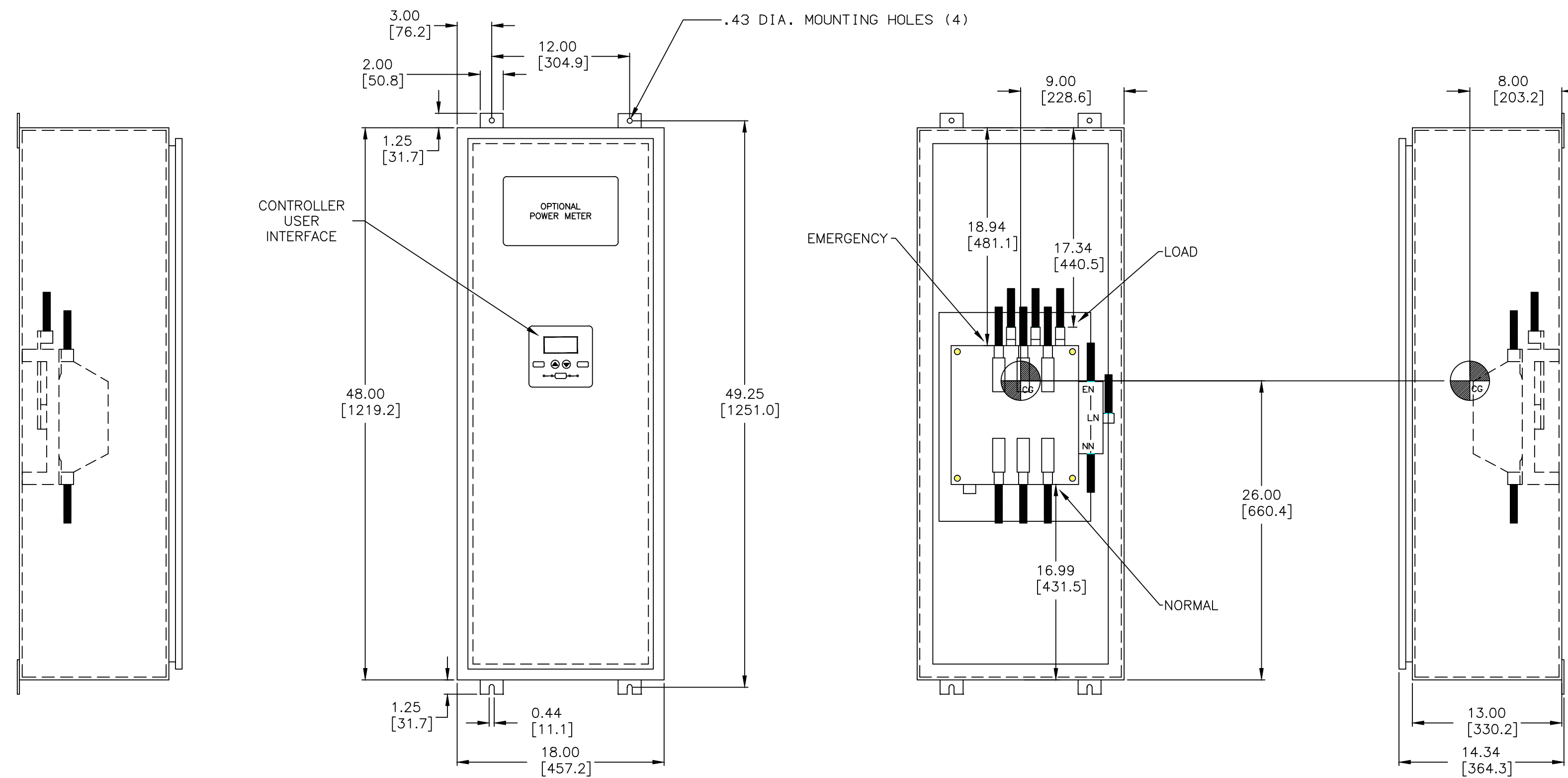
9.  CENTER OF GRAVITY

## UNIT WEIGHT, LBS (KG)

AMP SIZE	POLES	WEIGHT
260A TO 400A	2	153 (69)
	A2, C2	161 (73)
	3	161 (73)
	A3, C3	169 (77)



TOP VIEW

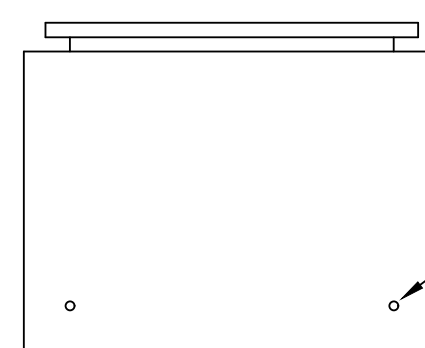


LEFT SIDE

FRONT VIEW WITH DOOR

FRONT VIEW WITHOUT DOOR

RIGHT SIDE



BOTTOM VIEW

REMOVING KNOCKOUTS CONVERTS THE TYPE 12 ENCLOSURE TO TYPE 3R

PROJECT NAME:		245220	BWM	SDH	11/4/13
REV. TO SHEET	ECN NO.	BY	APP.	DATE	
COMPOSITE OUTLINE					
300 SERIES, E3ATS/E3NTS RATED 260-400 AMPERES					
TYPE 3R/4/4X/12 ENCLOSURE					
DRAWN BY	BY	DATE	MANUFACTURING TOLERANCES TO BE IN ACCORDANCE WITH ASCO PROCEDURE MP-1-003. FOR PLASTIC PARTS SEE MP-1-055.	ASSEM. REF. NO.	COMPUTER GENERATED DRAWING
CHECKED			PROPERTY OF ASCO POWER TECHNOLOGIES. USE PERMITTED FOR OUR WORK ONLY. ALL RIGHTS OF DESIGN OR INVENTION ARE RESERVED.		SCALE 1/8" = 1" SIZE DS
PROJECT APPROVAL					DWG. NO. 978732-001
FINAL APPROVAL	SDH	11/4/13			DRAWING REV. NO. 245220 SHEET 1 OF 1

**ASCO** ASCO POWER TECHNOLOGIES, L.P.  
FLORHAM PARK, NEW JERSEY 07932 U.S.A.