

ASCO 185 SERIES AUTOMATIC POWER TRANSFER SWITCHES RATED 260 & 400 AMPERES, 240V SINGLE PHASE, 3 WIRE

NOTES:

- Automatic Power Switch: ASCO E185, 2 pole, 260 & 400 amperes, 240 vac. Listed to UL 1008, Standard for Transfer Switching Equipment. For use on Optional Standby Systems as defined by NFPA 70 (National Electrical Code (NEC), Article 702.
Transfer Controller - Group 4 Automatic Transfer Switch Controller including: (Refer to 185 Series Operator's Manual, PN 381333-319, supplied with the transfer switch for detailed information)

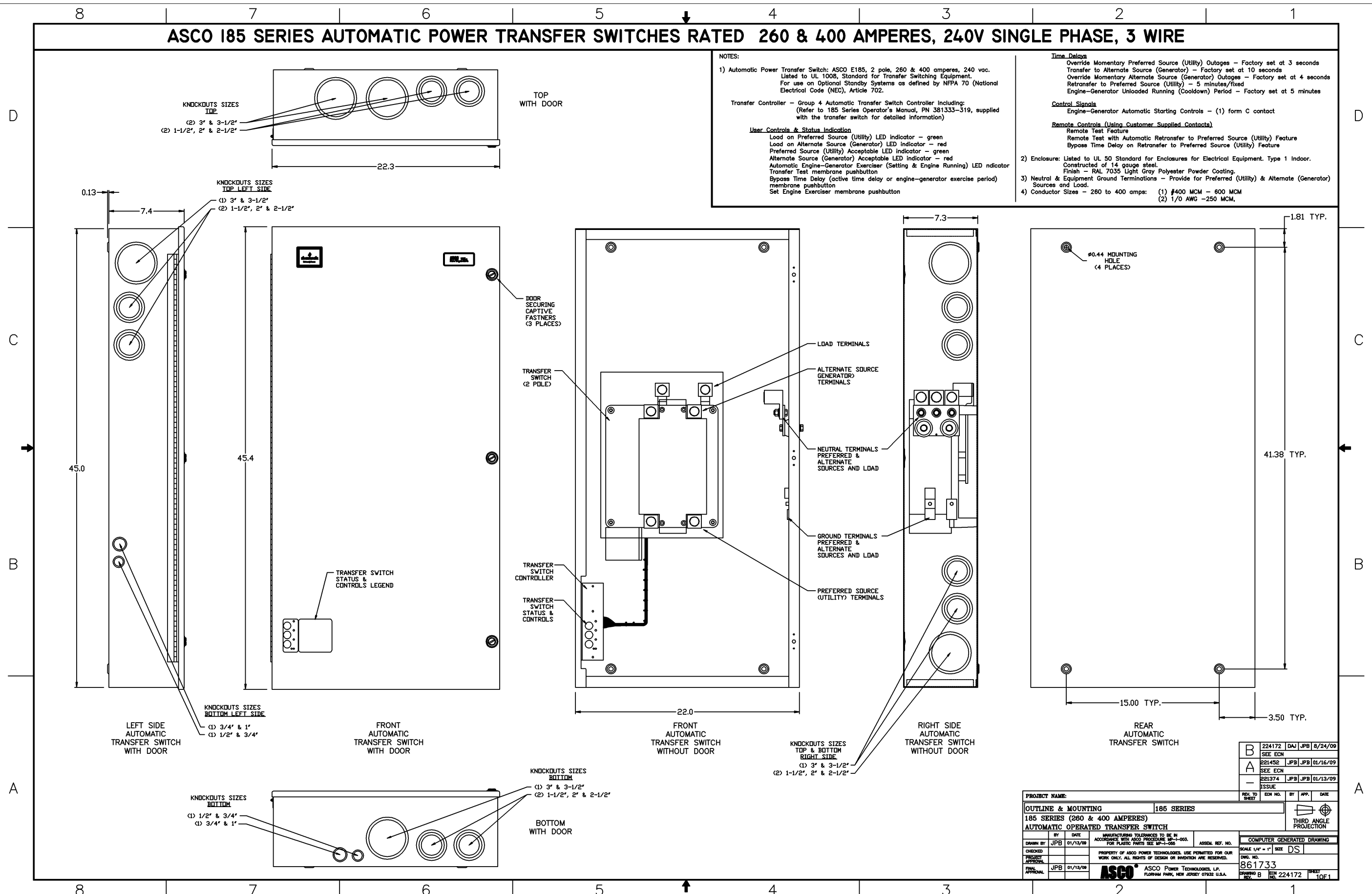
User Controls & Status Indication
 Load on Preferred Source (Utility) LED indicator - green
 Load on Alternate Source (Generator) LED indicator - red
 Preferred Source (Utility) Acceptable LED indicator - green
 Alternate Source (Generator) Acceptable LED indicator - red
 Automatic Engine-Generator Exerciser (Setting & Engine Running) LED indicator
 Transfer Test membrane pushbutton
 Bypass Time Delay (active time delay or engine-generator exercise period) membrane pushbutton
 Set Engine Exerciser membrane pushbutton

Time Delays
 Override Momentary Preferred Source (Utility) Outages - Factory set at 3 seconds
 Transfer to Alternate Source (Generator) - Factory set at 10 seconds
 Override Momentary Alternate Source (Generator) Outages - Factory set at 4 seconds
 Retransfer to Preferred Source (Utility) - 5 minutes/fix
 Engine-Generator Unloaded Running (Cooldown) Period - Factory set at 5 minutes

Control Signals
 Engine-Generator Automatic Starting Controls - (1) form C contact

Remote Controls (Using Customer Supplied Contacts)
 Remote Test Feature
 Remote Test with Automatic Retransfer to Preferred Source (Utility) Feature
 Bypass Time Delay on Retransfer to Preferred Source (Utility) Feature

- Enclosure: Listed to UL 50 Standard for Enclosures for Electrical Equipment, Type 1 Indoor. Constructed of 14 gauge steel. Finish - RAL 7035 Light Gray Polyester Powder Coating.
- Neutral & Equipment Ground Terminations - Provide for Preferred (Utility) & Alternate (Generator) Sources and Load.
- Conductor Sizes - 260 to 400 amps: (1) #400 MCM - 600 MCM (2) 1/0 AWG - 250 MCM.



PROJECT NAME:		224172 DAW JPB 8/24/09	
OUTLINE & MOUNTING		185 SERIES	
185 SERIES (260 & 400 AMPERES)		SEE ECH	
AUTOMATIC OPERATED TRANSFER SWITCH		SEE ECH	
ISSUE		221374 JPB JPB 01/13/09	
REV. TO SHEET		ECH NO.	
BY		APP.	
DATE		DATE	
DRAWN BY		SCALE 1/4" = 1" SIZE DS	
CHECKED		COMPUTER GENERATED DRAWING	
PROJECT APPROVAL		PROPERTY OF ASCO POWER TECHNOLOGIES. USE PERMITTED FOR OUR WORK ONLY. ALL RIGHTS OF DESIGN OR INVENTION ARE RESERVED.	
FINAL APPROVAL		DWG. NO. 861733	
ASCO		DRAWING B ECH NO. 224172 SHEET 10F1	