

ASC0 185 SERIES AUTOMATIC & MANUALLY OPERATED POWER TRANSFER SWITCHES RATED 100, 200, & 230 AMPERES, 240 VAC, SINGLE PHASE/3 WIRE

NOTES:

1) Automatic & Manually Operated Power Transfer Switch: ASC0 D185, 2 pole, 100, 200, & 230 amperes, 240 vac. Listed to UL 1008. Standard for Transfer Switching Equipment. For use on Optional Standby Systems as defined by NFPA 70 (National Electrical Code (NEC), Article 702.

Transfer Controller (Automatic Type Only) - Group 4 Automatic Transfer Switch Controller including: (Refer to 185 Series Operator's Manual, PN 381333-319, supplied with the transfer switch for detailed information)

User Controls & Status Indication

- Load on Preferred Source (Utility) LED indicator - green
- Load on Alternate Source (Generator) LED indicator - red
- Preferred Source (Utility) Acceptable LED indicator - green
- Alternate Source (Generator) Acceptable LED indicator - red
- Automatic Engine-Generator Exerciser (Setting & Engine Running) LED indicator
- Transfer Test membrane pushbutton
- Bypass Time Delay (active time delay or engine-generator exercise period) membrane pushbutton
- Set Engine Exerciser membrane pushbutton

Time Delays

- Override Momentary Preferred Source (Utility) Outages - Factory set at 3 seconds
- Transfer to Alternate Source (Generator) - Factory set at 10 seconds
- Override Momentary Alternate Source (Generator) Outages - Factory set at 4 seconds
- Retransfer to Preferred Source (Utility) - 5 minutes/fixed
- Engine-Generator Unloaded Running (Cooldown) Period - Factory set at 5 minutes

Control Signals

Engine-Generator Automatic Starting Controls - (1) form C contact

Remote Controls (Using Customer Supplied Contacts)

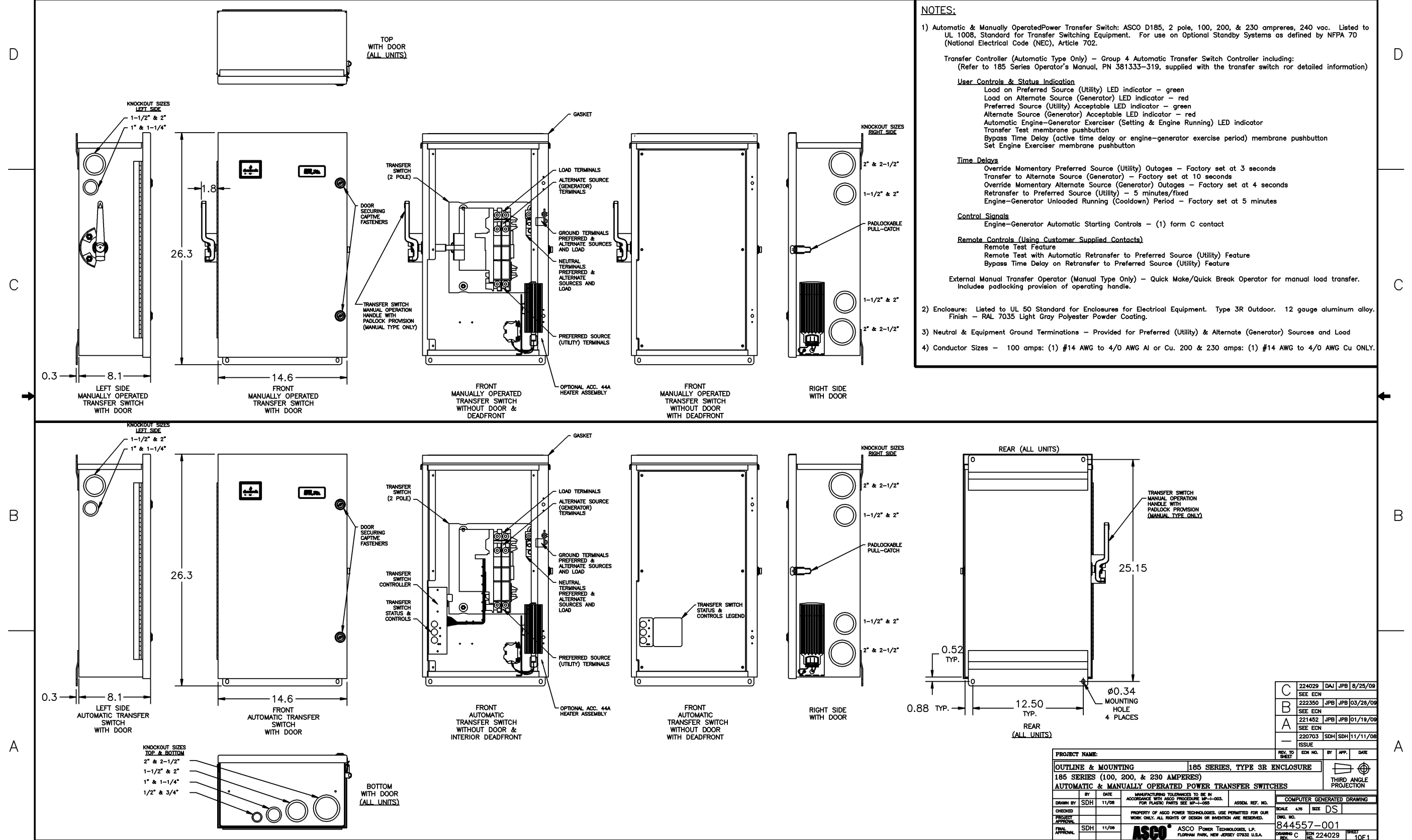
- Remote Test Feature
- Remote Test with Automatic Retransfer to Preferred Source (Utility) Feature
- Bypass Time Delay on Retransfer to Preferred Source (Utility) Feature

External Manual Transfer Operator (Manual Type Only) - Quick Make/Quick Break Operator for manual load transfer. Includes padlocking provision of operating handle.

2) Enclosure: Listed to UL 50 Standard for Enclosures for Electrical Equipment. Type 3R Outdoor. 12 gauge aluminum alloy. Finish - RAL 7035 Light Gray Polyester Powder Coating.

3) Neutral & Equipment Ground Terminations - Provided for Preferred (Utility) & Alternate (Generator) Sources and Load

4) Conductor Sizes - 100 amps: (1) #14 AWG to 4/0 AWG Al or Cu. 200 & 230 amps: (1) #14 AWG to 4/0 AWG Cu ONLY.



C	224029	DAW	JPB	8/25/09
	SEE ECD			
B	222350	JPB	JPB	03/26/09
	SEE ECD			
A	221452	JPB	JPB	01/19/09
	SEE ECD			
-	220703	SDH	SDH	11/11/08
	ISSUE			

PROJECT NAME:		185 SERIES, TYPE 3R ENCLOSURE	
OUTLINE & MOUNTING		185 SERIES (100, 200, & 230 AMPERES)	
AUTOMATIC & MANUALLY OPERATED POWER TRANSFER SWITCHES			
REV. NO.	BY	APP.	DATE
1	SDH		11/08
DRAWN BY		ASSEMBLY NO.	
CHECKED		SCALE	
PROJECT APPROVAL		SIZE	
FINAL APPROVAL		DRAWING NO.	
		844557-001	
		DRAWING C	
		REV. NO. 224029	
		SHEET 10F1	