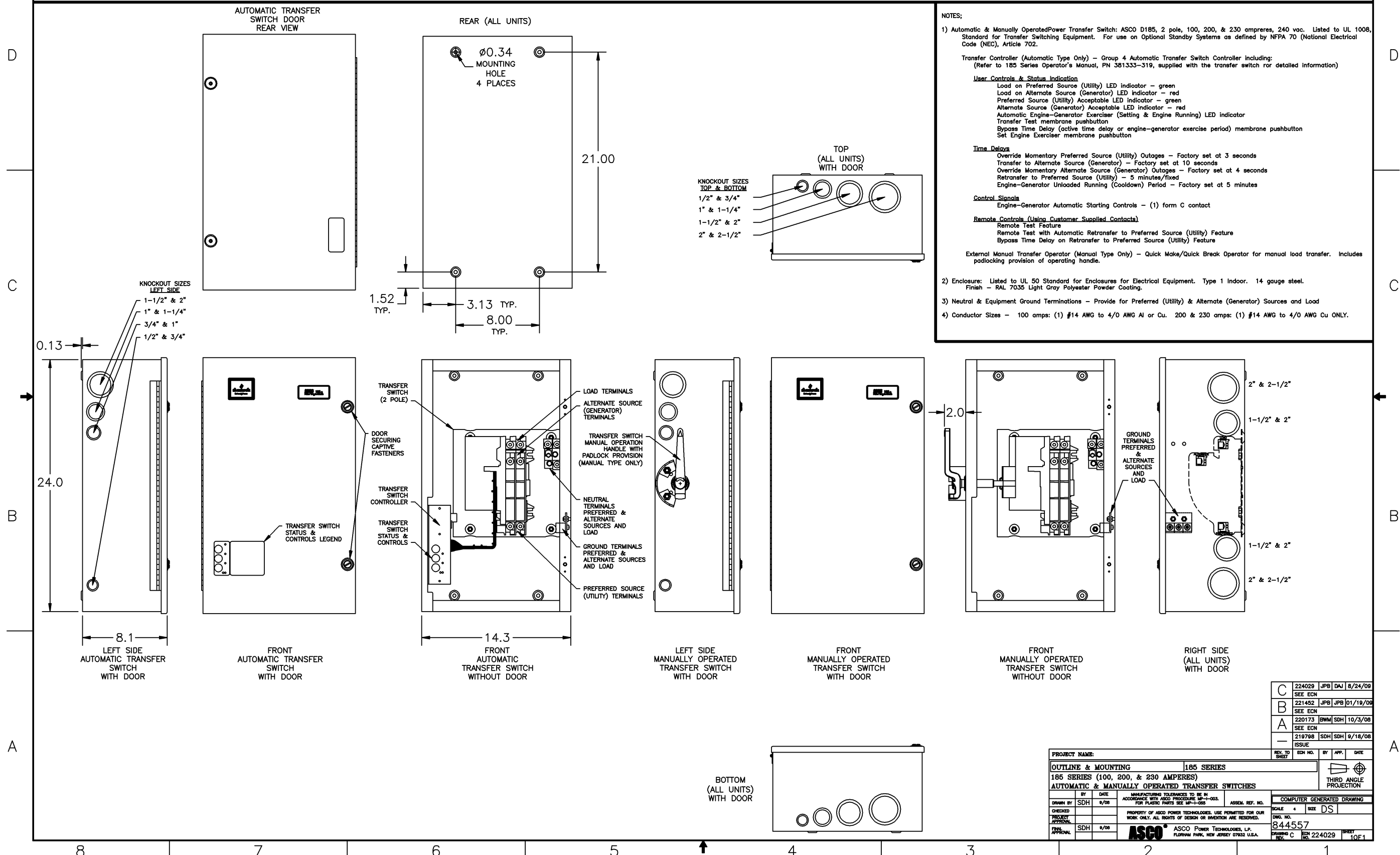


ASCO 185 SERIES AUTOMATIC & MANUALLY OPERATED POWER TRANSFER SWITCHES RATED 100, 200, & 230 AMPERES, 240 VAC, SINGLE PHASE/3 WIRE



NOTES:

1) Automatic & Manually Operated Power Transfer Switch: ASCO D185, 2 pole, 100, 200, & 230 amperes, 240 vac. Listed to UL 1008, Standard for Transfer Switching Equipment. For use on Optional Standby Systems as defined by NFPA 70 (National Electrical Code (NEC), Article 702.

Transfer Controller (Automatic Type Only) - Group 4 Automatic Transfer Switch Controller including:
(Refer to 185 Series Operator's Manual, PN 381333-319, supplied with the transfer switch for detailed information)

User Controls & Status Indication
 Load on Preferred Source (Utility) LED indicator - green
 Load on Alternate Source (Generator) LED indicator - red
 Preferred Source (Utility) Acceptable LED indicator - green
 Alternate Source (Generator) Acceptable LED indicator - red
 Automatic Engine-Generator Exerciser (Setting & Engine Running) LED indicator
 Transfer Test membrane pushbutton
 Bypass Time Delay (active time delay or engine-generator exercise period) membrane pushbutton
 Set Engine Exerciser membrane pushbutton

Time Delays
 Override Momentary Preferred Source (Utility) Outages - Factory set at 3 seconds
 Transfer to Alternate Source (Generator) - Factory set at 10 seconds
 Override Momentary Alternate Source (Generator) Outages - Factory set at 4 seconds
 Retransfer to Preferred Source (Utility) - 5 minutes/fix
 Engine-Generator Unloaded Running (Cooldown) Period - Factory set at 5 minutes

Control Signals
 Engine-Generator Automatic Starting Controls - (1) form C contact

Remote Controls (Using Customer Supplied Contacts)
 Remote Test Feature
 Remote Test with Automatic Retransfer to Preferred Source (Utility) Feature
 Bypass Time Delay on Retransfer to Preferred Source (Utility) Feature

External Manual Transfer Operator (Manual Type Only) - Quick Make/Quick Break Operator for manual load transfer. Includes padlocking provision of operating handle.

2) Enclosure: Listed to UL 50 Standard for Enclosures for Electrical Equipment. Type 1 Indoor. 14 gauge steel. Finish - RAL 7035 Light Gray Polyester Powder Coating.

3) Neutral & Equipment Ground Terminations - Provide for Preferred (Utility) & Alternate (Generator) Sources and Load

4) Conductor Sizes - 100 amps: (1) #14 AWG to 4/0 AWG Al or Cu. 200 & 230 amps: (1) #14 AWG to 4/0 AWG Cu ONLY.

| | | | | |
|---|---------|-----|-----|----------|
| C | 224029 | JPB | DAJ | 8/24/09 |
| | SEE ECN | | | |
| B | 221452 | JPB | JPB | 01/19/08 |
| | SEE ECN | | | |
| A | 220173 | BWM | SDH | 10/3/08 |
| | SEE ECN | | | |
| - | 218798 | SDH | SDH | 9/18/08 |
| | ISSUE | | | |

| | | | |
|---|------|---|----------|
| PROJECT NAME: | | 185 SERIES | |
| OUTLINE & MOUNTING | | 185 SERIES (100, 200, & 230 AMPERES) | |
| AUTOMATIC & MANUALLY OPERATED TRANSFER SWITCHES | | COMPUTER GENERATED DRAWING | |
| BY | DATE | ASSEM. REF. NO. | SCALE |
| SDH | 9/08 | | 4 DS |
| CHECKED | DATE | PROPERTY OF ASCO POWER TECHNOLOGIES. USE PERMITTED FOR OUR WORK ONLY. ALL RIGHTS OF DESIGN OR INVENTION ARE RESERVED. | DWG. NO. |
| SDH | 9/08 | | 844557 |
| APPROVAL | DATE | ASCO POWER TECHNOLOGIES, L.P. | SHEET |
| | | FLORHAM PARK, NEW JERSEY 07932 U.S.A. | 10F1 |