

ASCO 185 SERIES SERVICE EQUIPMENT POWER TRANSFER SWITCH RATED 100, 200 AMPS, 240V SINGLE PHASE, 3 WIRE

NOTES:

1) Service Equipment Automatic Power Transfer Switch:
ASCO D01AUS, 2 pole, 100 & 200 amperes, 240 vac. Listed to UL 1008, Standard for Transfer Switching Equipment. For use on Optional Standby Systems as defined by NFPA 70 (National Electrical Code (NEC), Article 702).

* Suitable for use as service equipment—Normal Source Only.
An additional disconnect must be readily accessible for the alternate source, unless the alternate source is an accessible generator and can be readily shutdown.

Automatic Power Transfer Switch: ASCO D185, 2 pole, 100 & 200 amp, 240 vac.
UL Listed to UL 1008 Standard for Transfer Switching Equipment.

Transfer Controller - ASCO Group 4 Automatic Transfer Switch Controller including:
(Refer to 185 Series Operator's Manual, PN 381333-319, supplied with the transfer switch for detailed information)

User Controls & Status Indication

Load on Preferred Source (Utility) LED indicator - green
Load on Alternate Source (Generator) LED indicator - red
Preferred Source (Utility) Acceptable LED indicator - green
Alternate Source (Generator) Acceptable LED indicator - red
Automatic Engine-Generator Exerciser (Setting & Engine Running) LED indicator
Transfer Test membrane pushbutton
Bypass Time Delay (active time delay or engine-generator exercise period) membrane pushbutton
Set Engine Exerciser membrane pushbutton

Time Delays

Override Momentary Preferred Source (Utility) Outages - Factory set at 3 seconds
Transfer to Alternate Source (Generator) - Factory set at 10 seconds
Override Momentary Alternate Source (Generator) Outages - Factory set at 4 seconds
Retransfer to Preferred Source (Utility) - 5 minutes/fixed
Engine-Generator Unloaded Running (Cooldown) Period - Factory set at 2 minutes

Control Signals

Engine-Generator Automatic Starting Controls - (1) form C contact

Remote Controls (Using Customer Supplied Contacts)

Remote Test Feature
Remote Test with Automatic Retransfer to Preferred Source (Utility) Feature
Bypass Time Delay on Retransfer to Preferred Source (Utility) Feature

2) Enclosure: Listed to UL 50 Standard for Enclosures for Electrical Equipment, Type 3R Outdoor.
Constructed of 0.10 thick Aluminium Alloy (5052-H32).
Finish - RAL 7035 Light Gray Polyester Powder Coating.

3) Neutral & Equipment Ground Terminations - Provide for Preferred (Utility) & Alternate (Generator) Sources and Load.

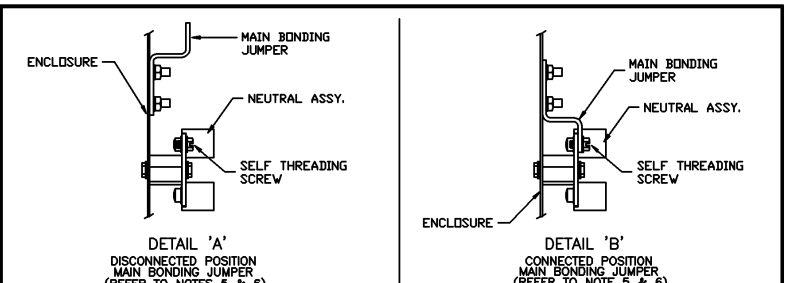
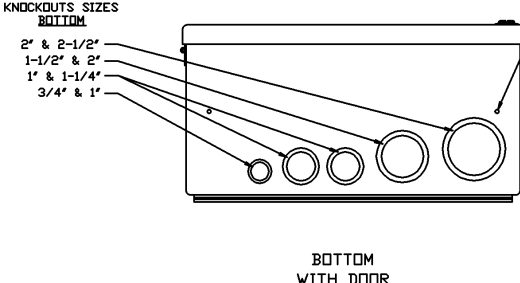
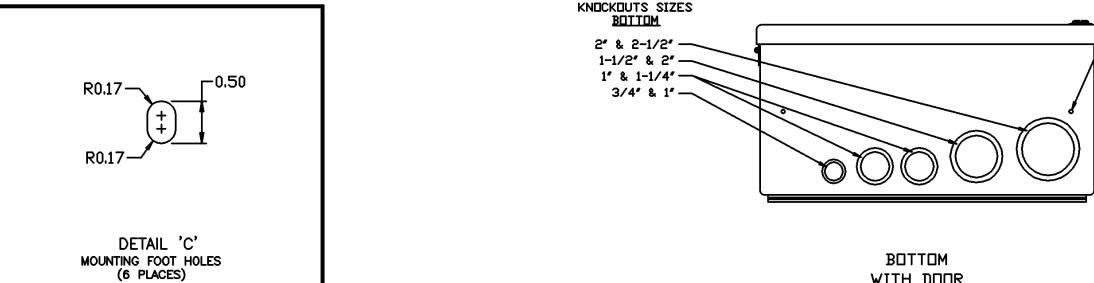
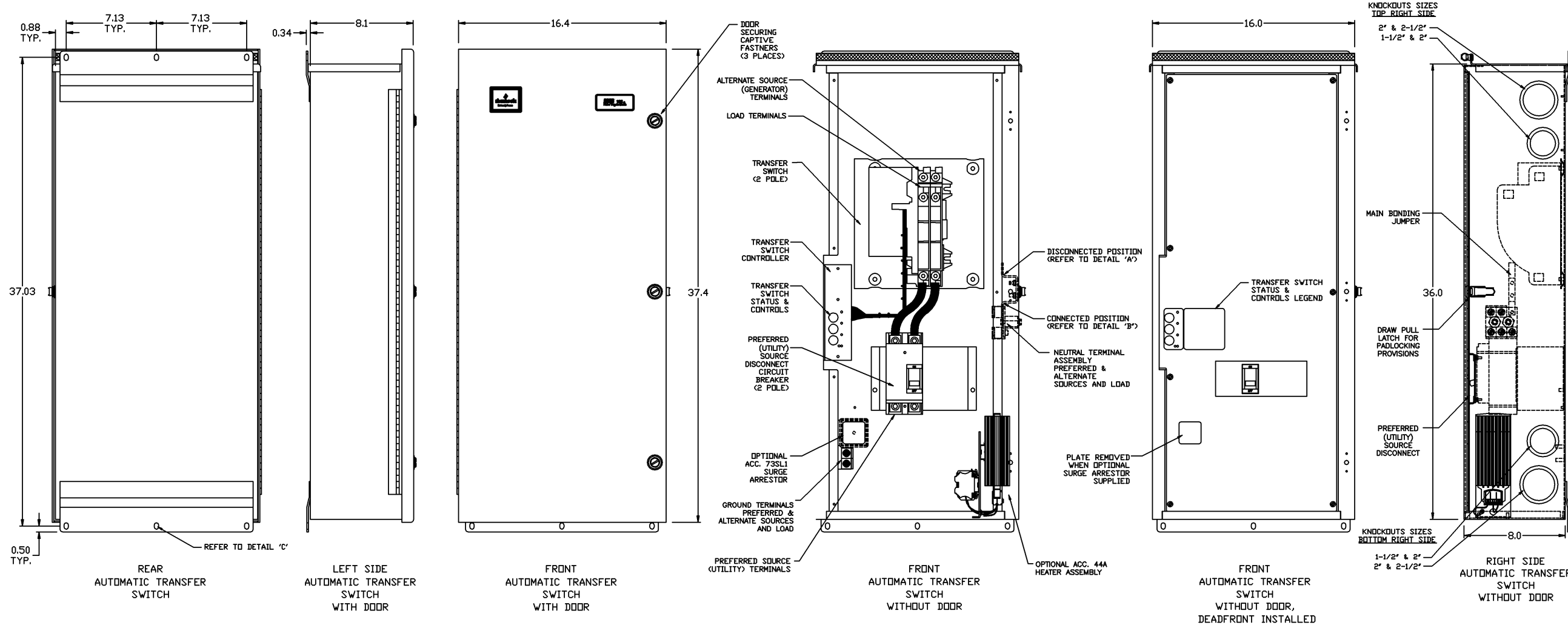
4) Conductor Sizes - 100 amps: (1) #14 AWG to 4/0 AWG Al OR Cu, Alternate (Generator) Source and Load
200 amps: (1) #14 AWG to 4/0 AWG Cu ONLY, Alternate (Generator) Source and Load



(1) #4 AWG to 300 MCM, Preferred (Utility) Source

5) Main Bonding Jumper factory installed in the Disconnected position.

6) When used for Service Entrance the Main Bonding Jumper is to be removed from the Disconnected position and re-installed in the Connected position, with the existing hardware and one (1) additional 1/4"-20 thread forming screw, which connects the Main Bonding Jumper to the Neutral Terminal Assembly.

7) Short Circuit Rating:
(Main): 10kA at 240 vac (Preferred (Utility) Source Disconnect Circuit Breaker), Square-D Cat. No. QBL22100, 2 pole, 100 amp or Square-D Cat. No. QBL22200, 2 pole, 200 amp.



D	224172	DAW	JPB	8/25/09
	SEE ECH			
C	222399	JPB	JPB	03/31/09
	SEE ECH			
B	221452	JPB	JPB	01/16/09
	SEE ECH			
A	221364	JPB	JPB	01/12/09
	SEE ECH			
—	220715	JPB	JPB	11/12/08
	ISSUE			
PROJECT NAME:				
REV. BY ECH NO. BY APP. DATE				
— SHEET				
OUTLINE &				INSTALLATION
SERIES 185 (100 & 200 AMPERES), TYPE 3R, D01AUS, GRP 4 CONTROLS				
SUITABLE FOR SERVICE EQUIPMENT — NORMAL SOURCE ONLY				
				 THIRD ANGLE PROJECTION
MANUFACTURING TOLERANCES TO BE IN ACCORDANCE WITH ASCO PROCEDURE MP-1-003. FOR PLASTIC PARTS SEE MP-1-050				
DRAWN BY		JPB	DATE	11/12/08
CHECKED				
PROJECT APPROVAL				
FINAL APPROVAL		JPB	11/12/08	
PROPERTY OF ASCO POWER TECHNOLOGIES. USE PERMITTED FOR OUR WORK ONLY. ALL RIGHTS OF DESIGN OR INVENTION ARE RESERVED.				
 ASCO POWER TECHNOLOGIES, L.P. FLORHAM PARK, NEW JERSEY 07932 U.S.A.				
COMPUTER GENERATED DRAWING				
SCALE		SIZE DS		
DWG. NO. 851743-001				
DRAWING D		REV. 224172		SHEET 10F1