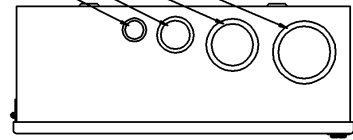


# ASCO 185 SERIES SERVICE EQUIPMENT POWER TRANSFER SWITCH RATED 100, 200 AMPS, 240V SINGLE PHASE, 3 WIRE

**KNOCKOUTS SIZES TOP & BOTTOM**  
 2" & 2-1/2"  
 1-1/2" & 2"  
 1" & 1-1/4"  
 1/2" & 3/4"



TOP WITH DOOR

**NOTES:**

- Service Equipment Automatic Power Transfer Switch: ASCO D01AUS, 2 pole, 100 & 200 amperes, 240 vac. Listed to UL 1008, Standard for Transfer Switching Equipment. For use on Optional Standby Systems as defined by NFPA 70 (National Electrical Code (NEC), Article 702).  
 \* Suitable for use as service equipment—Normal Source Only. An additional disconnect must be readily accessible for the alternate source, unless the alternate source is an accessible generator and can be readily shutdown.  
 Automatic Power Transfer Switch: ASCO D185, 2 pole, 100 & 200 amps, 240 vac. UL Listed to UL 1008 Standard for Transfer Switching Equipment.  
 Transfer Controller - ASCO Group 4 Automatic Transfer Switch Controller including: (Refer to 185 Series Operator's Manual, PN 381333-319, supplied with the transfer switch for detailed information)  
**User Controls & Status Indication**  
 Load on Preferred Source (Utility) LED indicator - green  
 Load on Alternate Source (Generator) LED indicator - red  
 Preferred Source (Utility) Acceptable LED indicator - green  
 Alternate Source (Generator) Acceptable LED indicator - red  
 Automatic Engine-Generator Exerciser (Setting & Engine Running) LED indicator  
 Transfer Test membrane pushbutton  
 Bypass Time Delay (active time delay or engine-generator exercise period) membrane pushbutton  
 Set Engine Exerciser membrane pushbutton
- Enclosure: Listed to UL 50 Standard for Enclosures for Electrical Equipment. Type 1 Indoor. Constructed of 14 gauge steel. Finish - RAL 7035 Light Gray Polyester Powder Coating.
- Neutral & Equipment Ground Terminations - Provide for Preferred (Utility) & Alternate (Generator) Sources and Load.
- Conductor Sizes - 100 amps: (1) #14 AWG to 4/0 AWG Al or Cu, Alternate (Generator) Source and Load  
 200 amps: (1) #14 AWG to 4/0 AWG Cu ONLY, Alternate (Generator) Source and Load  
 (1) #4 AWG to 300 MCM, Preferred (Utility) Source

**Time Delays**

- Override Momentary Preferred Source (Utility) Outages - Factory set at 3 seconds Transfer to Alternate Source (Generator) - Factory set at 10 seconds
- Override Momentary Alternate Source (Generator) Outages - Factory set at 4 seconds Retransfer to Preferred Source (Utility) - 5 minutes/fix
- Engine-Generator Unloaded Running (Cooldown) Period - Factory set at 2 minutes

**Control Signals**

Engine-Generator Automatic Starting Controls - (1) form C contact

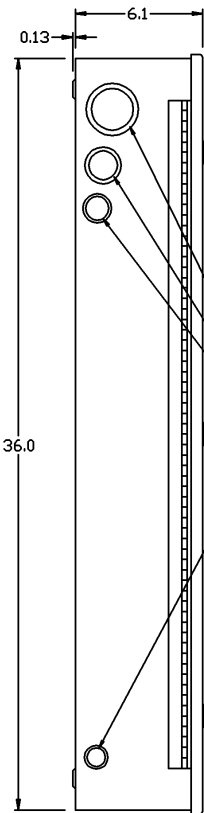
**Remote Controls (Using Customer Supplied Contacts)**

- Remote Test Feature
- Remote Test with Automatic Retransfer to Preferred Source (Utility) Feature
- Bypass Time Delay on Retransfer to Preferred Source (Utility) Feature

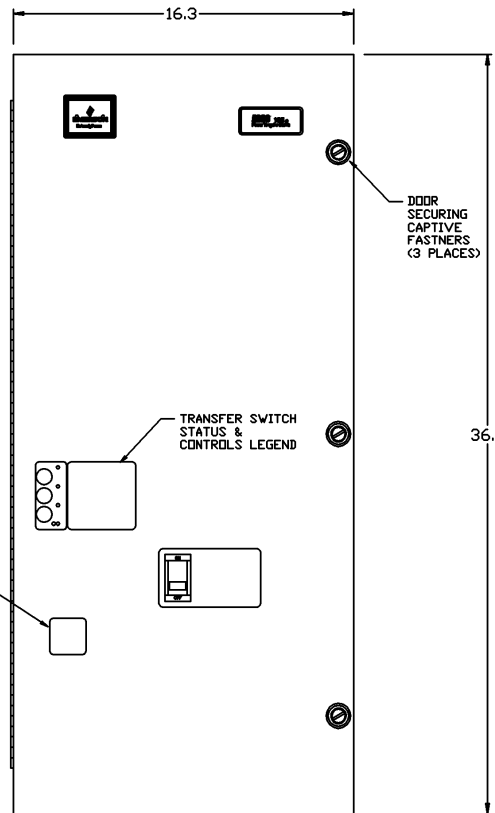
5) Main Bonding Jumper factory installed in the Disconnected position.

6) When used for Service Entrance the Main Bonding Jumper is to be removed from the Disconnected position and re-installed in the Connected position, with the existing hardware and one (1) additional 1/4"-20 thread forming screw, which connects the Main Bonding Jumper to the Neutral Terminal Assembly.

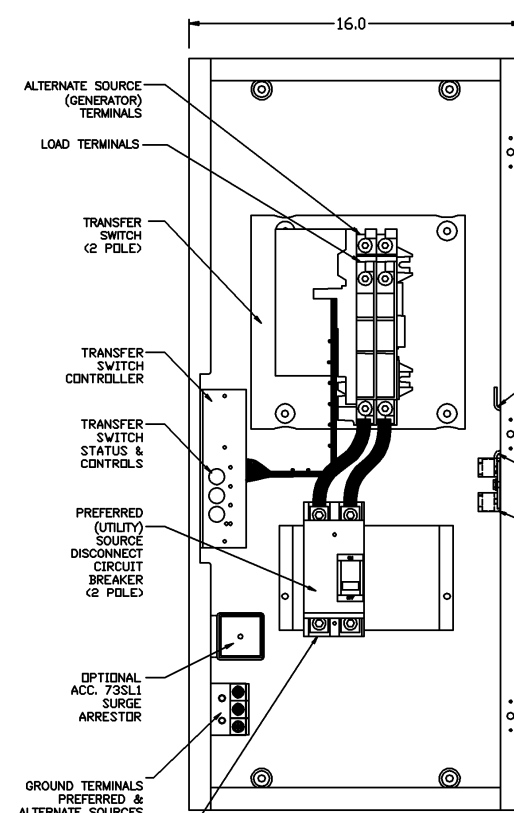
7) Short Circuit Rating:  
 (Main): 10kA at 240 vac (Preferred (Utility) Source Disconnect Circuit Breaker), Square-D Cat. No. QBL22100, 2 pole, 100 amp or Square-D Cat. No. QBL22200, 2 pole, 200 amp.



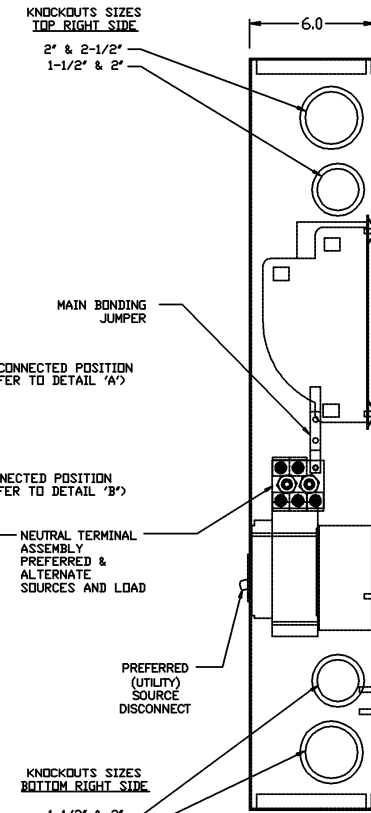
LEFT SIDE AUTOMATIC TRANSFER SWITCH WITH DOOR



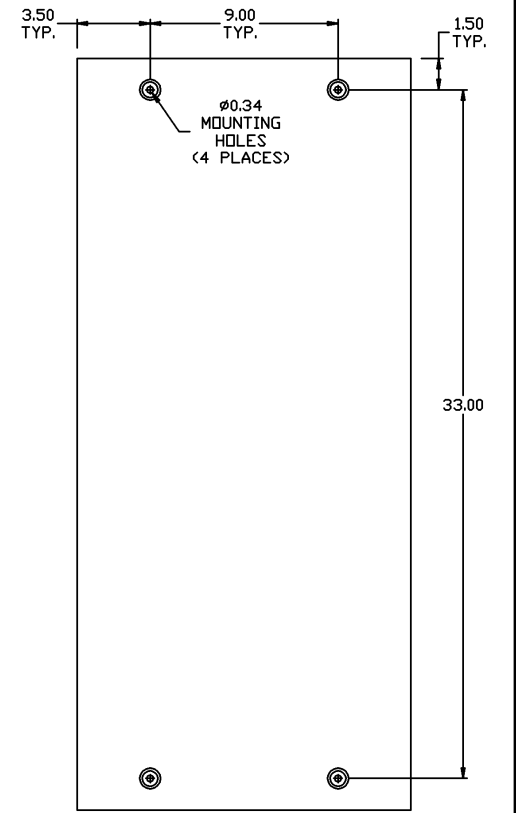
FRONT AUTOMATIC TRANSFER SWITCH WITH DOOR



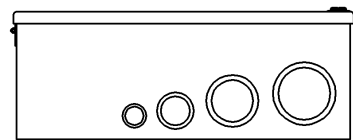
FRONT AUTOMATIC TRANSFER SWITCH WITHOUT DOOR



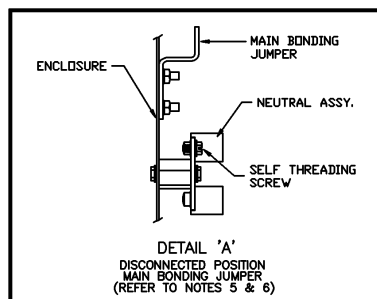
RIGHT SIDE AUTOMATIC TRANSFER SWITCH WITHOUT DOOR



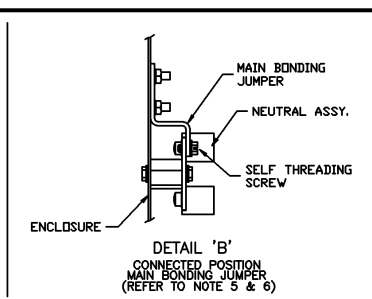
REAR AUTOMATIC TRANSFER SWITCH



BOTTOM WITH DOOR



DETAIL 'A' DISCONNECTED POSITION MAIN BONDING JUMPER (REFER TO NOTES 5 & 6)



DETAIL 'B' CONNECTED POSITION MAIN BONDING JUMPER (REFER TO NOTE 5 & 6)

|   |          |                 |      |  |
|---|----------|-----------------|------|--|
| REV. TO SHEET   | REV. NO. | BY              | APP. | DATE   |
|   |          |                 |      |  |
| PROJECT NAME: <b>OUTLINE &amp; INSTALLATION</b><br><b>SERIES 185 (100 &amp; 200 AMPERES), TYPE 1, D01AUS, GRP 4 CONTROLS</b><br><b>SUITABLE FOR SERVICE EQUIPMENT - NORMAL SOURCE ONLY</b>                  |          |                 |      |  |
| DRAWN BY: JPB   |          | DATE: 05/15/08  |      | MANUFACTURING TOLERANCES TO BE IN ACCORDANCE WITH ASCO PROCEDURE MP-1-003. FOR PLASTIC PARTS SEE MP-1-005. |
| CHECKED BY:   |          | DATE:           |      | ASSEM. REF. NO.  |
| TRIPLE APPROVAL:  |          | DATE:           |      | COMPUTER GENERATED DRAWING   |
| DATE: 05/15/08  |          | DATE:           |      | SCALE: 1/4" = 1" SIZE: DS  |
| DRAWING E   |          | REV. NO. 224029 |      | SHEET 10F1   |
| PROPERTY OF ASCO POWER TECHNOLOGIES. USE PERMITTED FOR OUR WORK ONLY. ALL RIGHTS OF DESIGN OR INVENTION ARE RESERVED.<br><b>ASCO</b> ASCO POWER TECHNOLOGIES, L.P.<br>FLORHAM PARK, NEW JERSEY 07932 U.S.A. |          |                 |      |  |