

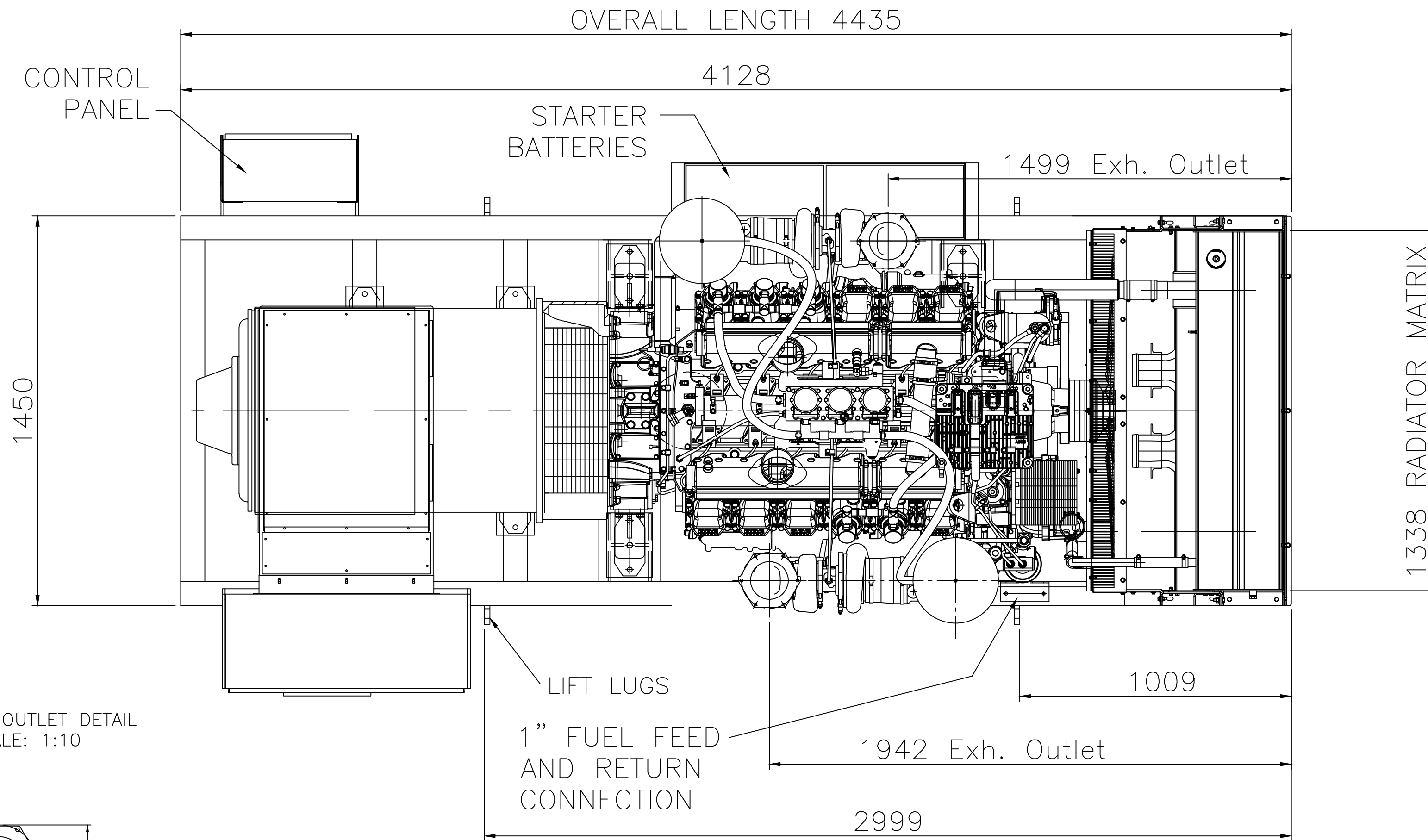
GENSET DETAILS-

ENGINE: MTU 12V 2000 G85  
 ALTERNATOR: NEWAGE HC1634G (SINGLE BEARING)  
 RADIATOR: BEARWARD 5685000200  
 AV MOUNTS: SM1657 55&75

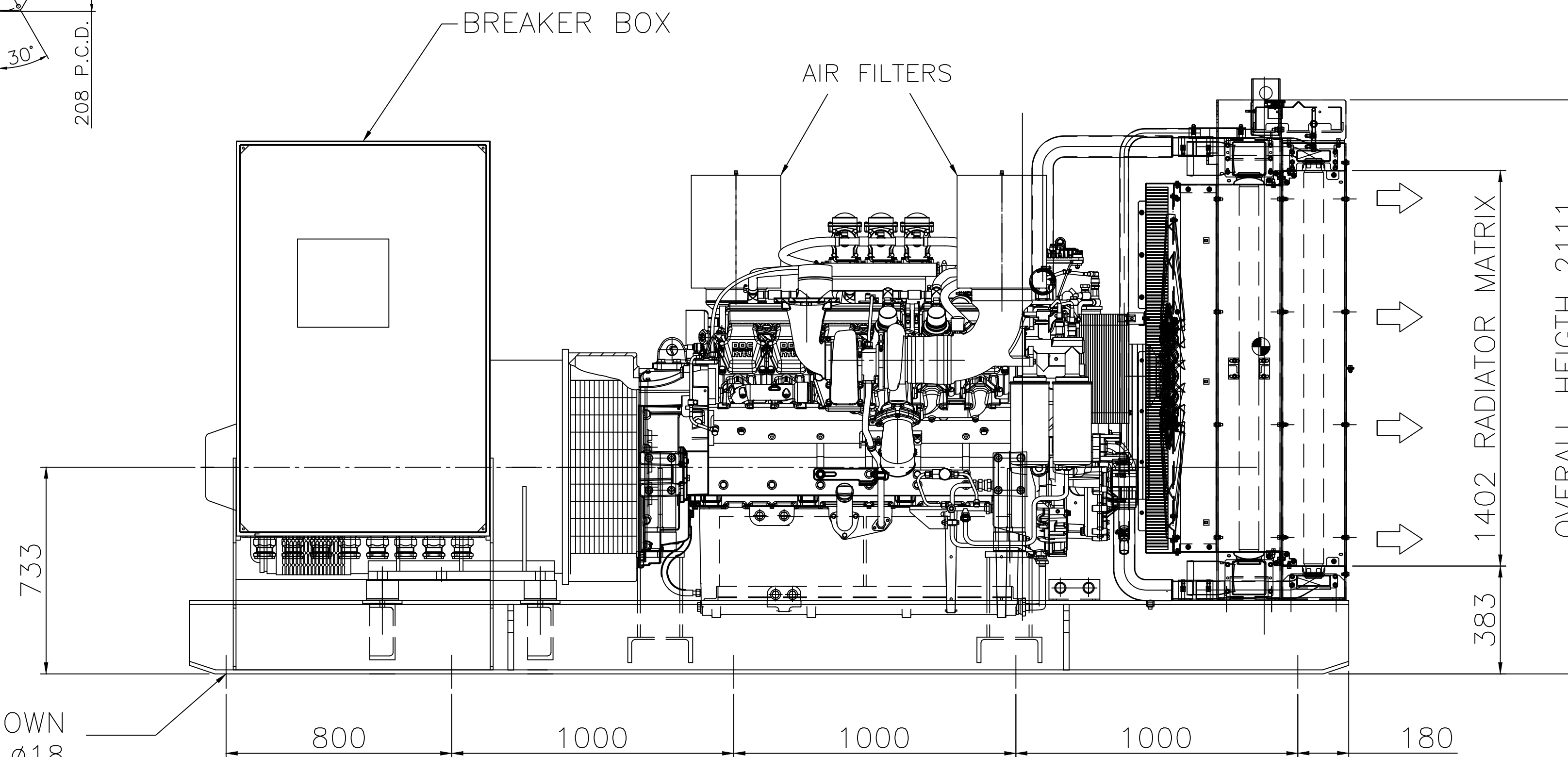
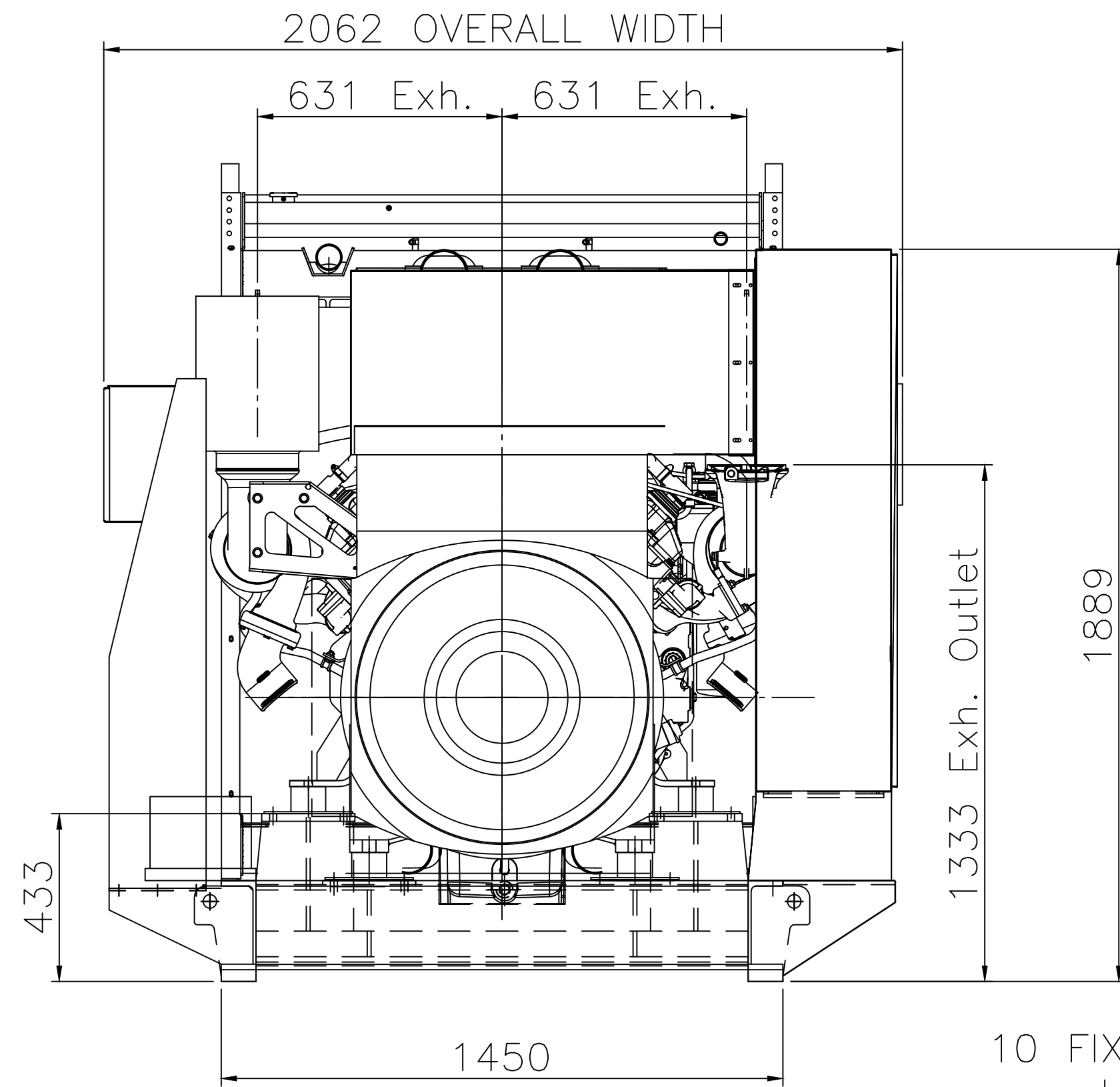
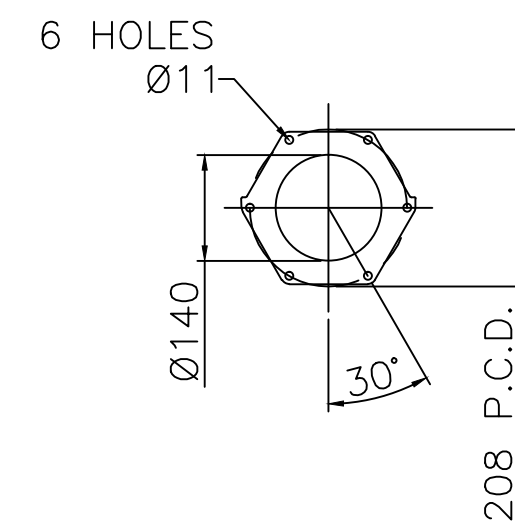
OUTPUT: 1000 kVA @ 1800 rpm (STANDBY RATING)  
 VOLTAGE 220/127 V, CURRENT 2624 A  
 800 kW, 60 Hz, 3 PH.

WEIGHTS:-  
 ENGINE: 2490 kg DRY, 2660 kg WET  
 ALTERNATOR: 1965 kg  
 RADIATOR: 410 kg DRY, 484 kg WET  
 BASEFRAME: 750 kg  
 TOTAL: 5875 kg DRY, 6450 kg WET

COLOURS:-  
 ENGINE:- MTU BLUE  
 BASEFRAME, ALTERNATOR & RADIATOR:-  
 SEMI GLOSS BLACK

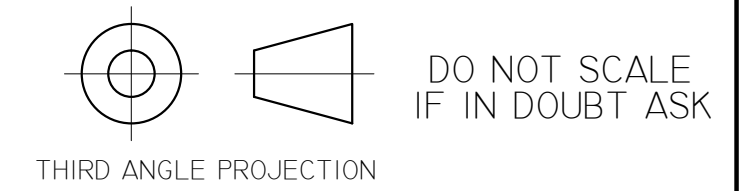


EXHAUST OUTLET DETAIL  
 SCALE: 1:10



No.	ALTERATIONS	CHK'D	DATE
-----	-------------	-------	------

NOTES - MECHANICAL  
 TOLERANCES:  
 GENERAL TOLERANCE + / - 5MM  
 FABRICATION + / - 5MM  
 HOLE CENTRES + / - 1MM  
 OTHER TOLERANCES AS STATED  
 WHERE REQUIRED



TITLE: GENERAL ARRANGEMENT	
CLIENT: BROADCASTCROWN INC.	
SITE: BROADCASTCROWN INC.	
W.O. No.:	ENGINEER: S.HOWES
TYPE:	DRAWN BY: S.HOWES
SCALE: NTS	DATE: MAR. '10
TOTAL No. OF SHEETS (1 - 999)	
DRAWING NO.	
BCM U 800S-GA01-A1	
ISSUE	
A	

**broadcrown**  
 Broadcrown Limited (Group Headquarters)  
 Airfield Industrial Estate, Hixon, Stafford,  
 ST18 0PF, United Kingdom  
 Tel: +44 (0) 1889 272200  
 Fax: +44 (0) 1889 272220  
 www.broadcrown.com