

ACCES EXTERIEUR AU MODULE DE COMMANDE (OPTION)
(EXTERNAL ACCESS TO CONTROL PANEL (OPTIONAL))

SORTIE CABLES LATERALE HAUTE
(HIGH LATERAL CABLES OUTLET)

ACCES AU DEGAZAGE BATTERIE AERO BT
(ACCESS TO COOLING SYSTEM CHARGED AIR VENTLINE)

| Moteur Engine | Alternateur Generator | Masse (kg) Weight (lbs) | | Centre de gravité - Odm Center of gravity - Wet | |
|----------------------------------|-----------------------|-------------------------|-------------|---|---------|
| | | A vide/Dry | Odm/Wet | Gx (mm) | Gz (mm) |
| MTU 12V4000G23R1 | LSA 50.2 L8 | 24493/53885 | 26253/57757 | 6770 | 1200 |
| MTU 12V4000G23R1/G23R2 | LSA 50.2 VL10 | 24783/54523 | 26383/58043 | 6807 | 1197 |
| MTU 12V4000G23R2/G23/G43/G63/G83 | LSA 51.2 S55 | 25273/55601 | 26873/59121 | 6857 | 1191 |
| MTU 12V4000G23/G43/G63/G83 | LSA 51.2 M60 | 25583/56283 | 27183/59803 | 6893 | 1188 |
| MTU 16V4000G23/G43 | LSA 51.2 M60 | 27203/59847 | 28963/63719 | 6801 | 1176 |
| MTU 16V4000G23/G43 | LSA 51.2 L70 | 27513/60529 | 29373/64621 | 6848 | 1172 |
| MTU 16V4000G63/G83 | LSA 51.2 VL90 | 28173/61981 | 29933/65853 | 6911 | 1167 |
| MTU 16V4000G63/83 | LSA 51.2 VL95 | 28253/62157 | 30003/66007 | 6916 | 1167 |

Tolérance sur masse : ±5%
(Weight allowance : ±5%)

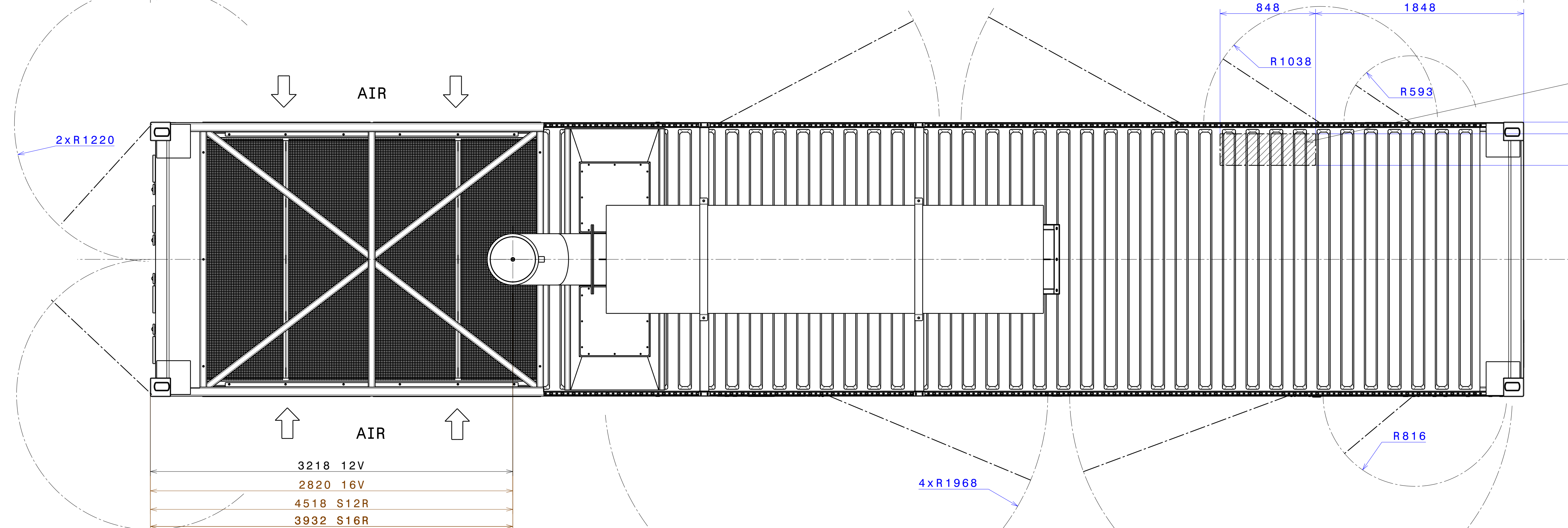
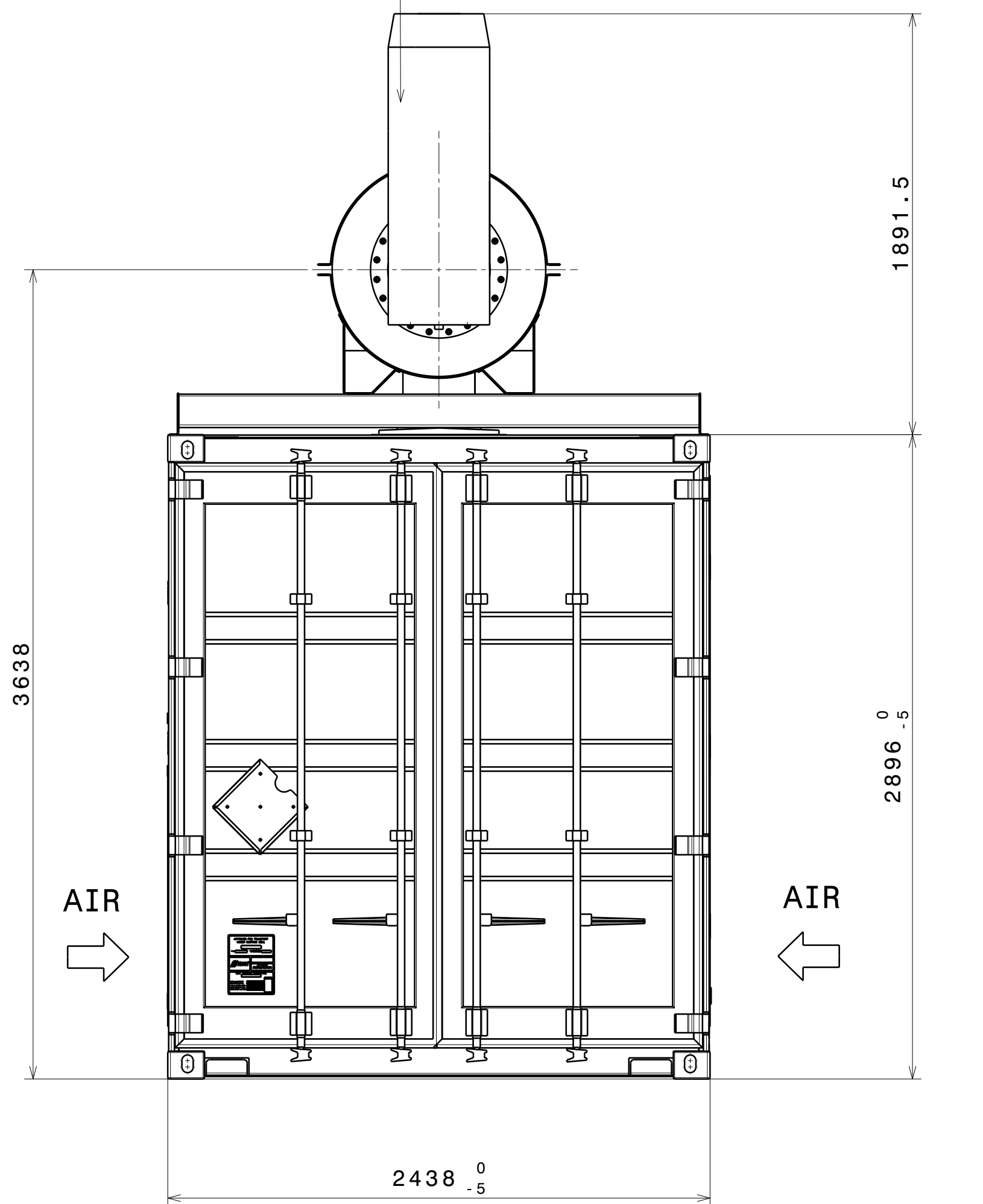
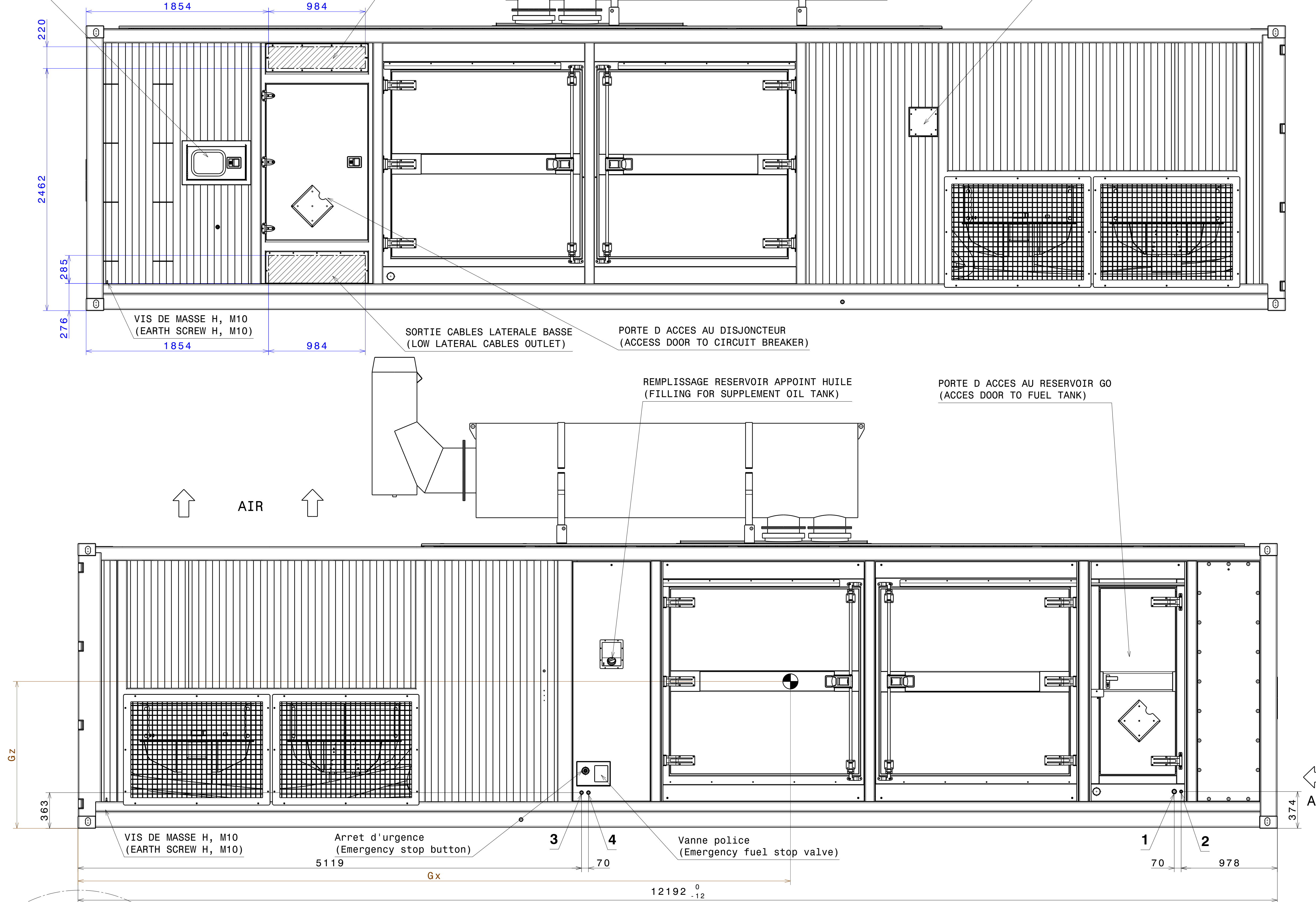
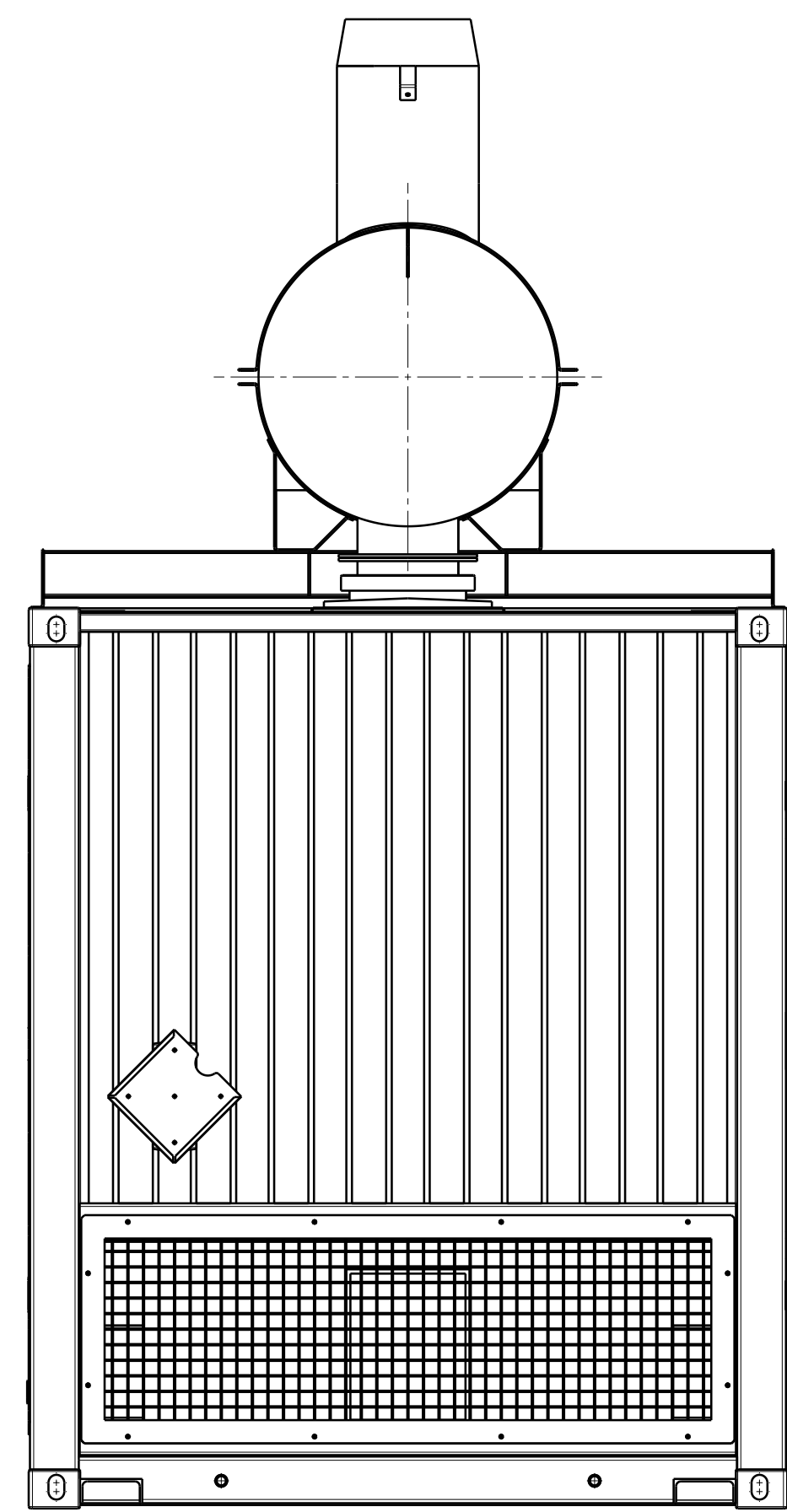
| Moteur Engine | Alternateur Generator | Masse (kg) Weight (lbs) | | Centre de gravité - Odm Center of gravity - Wet | |
|-----------------|-----------------------|-------------------------|-------------|---|---------|
| | | A vide/Dry | Odm/Wet | Gx (mm) | Gz (mm) |
| MI S12R-F1PTAW2 | LSA 50.2 L8 | 23423/51531 | 25163/55359 | 6906 | 1264 |
| MI S12R-F1PTAW2 | LSA 50.2 VL10 | 23713/52169 | 25443/55975 | 6943 | 1260 |
| MI S16R-F1PTAW2 | LSA 51.2 M60 | 26143/57515 | 27883/61343 | 7038 | 1229 |
| MI S16R-F1PTAW2 | LSA 51.2 L70 | 26563/58439 | 28293/62245 | 7103 | 1224 |

Tolérance sur masse : ±5%
(Weight allowance : ±5%)

Masse en version SI / réservoir 500L
(Weight in SI version / 500L tank)

OPTION SSI : +671 kg

ECHAPPEMENT DEMONTABLES POUR TRANSPORT
(REMOVABLE EXHAUST FOR TRANSPORT)



- 1: RETOUR REEMPLISSAGE AUTOMATIQUE VERS LA CUVE PRINCIPALE = 1.1/4" BSP TARAUDE
AUTOMATIC FUEL RETURN TO BULK TANK = BSP 1.1/4" TAPPED
- 2: ARRIVEE REEMPLISSAGE AUTOMATIQUE DE LA CUVE PRINCIPALE = 3/4" BSP TARAUDE
AUTOMATIC FUEL FILLING FROM BULK TANK = BSP 3/4" TAPPED
- 3: RETOUR VERS RESERVOIR SEPARÉ PAR SYSTEME DE VANNE 3 VOIES = 1" BSP TARAUDE
FUEL RETURN TO REMOTE TANK BY 3 WAY VALVES DEVICE = BSP 1" TAPPED
- 4: ARRIVEE RESERVOIR SEPARÉ PAR SYSTEME DE VANNE 3 VOIES = 1" BSP TARAUDE
FUEL INLET FROM REMOTE TANK BY 3 WAY VALVES DEVICE = BSP 1" TAPPED

Ce plan vous est remis à titre indicatif et peut être révisé sans préavis.
This drawing is for informational purposes only and maybe changed whitout notice.

| Rev | Création du document (First issue) | PROTO | Date | Visa | Date | Visa |
|-----|--|--|------------------------|---------------------------|------|------|
| | Designation de la modification (Description of change) | Status | Dessiné par (Drawn by) | Vérificateur (Checked by) | | |
| | Matière (Material) | | Formet (Size) | A0 | | |
| | Revêtement (Coating) | | Echelle (Scale) | 1/20 | | |
| | Tolérance (Tolerance) | ISO 2768-MK | Folio (Sheet) | 1/1 | | |
| | Designation (Title) | CPU STANDARD - VUES EXTERIEURES (STANDARD CPU - OUTSIDE VIEWS) | Masse (Weight) | | | |
| | | 3-00-01-4893-01 | Rev.: | A | | |

