

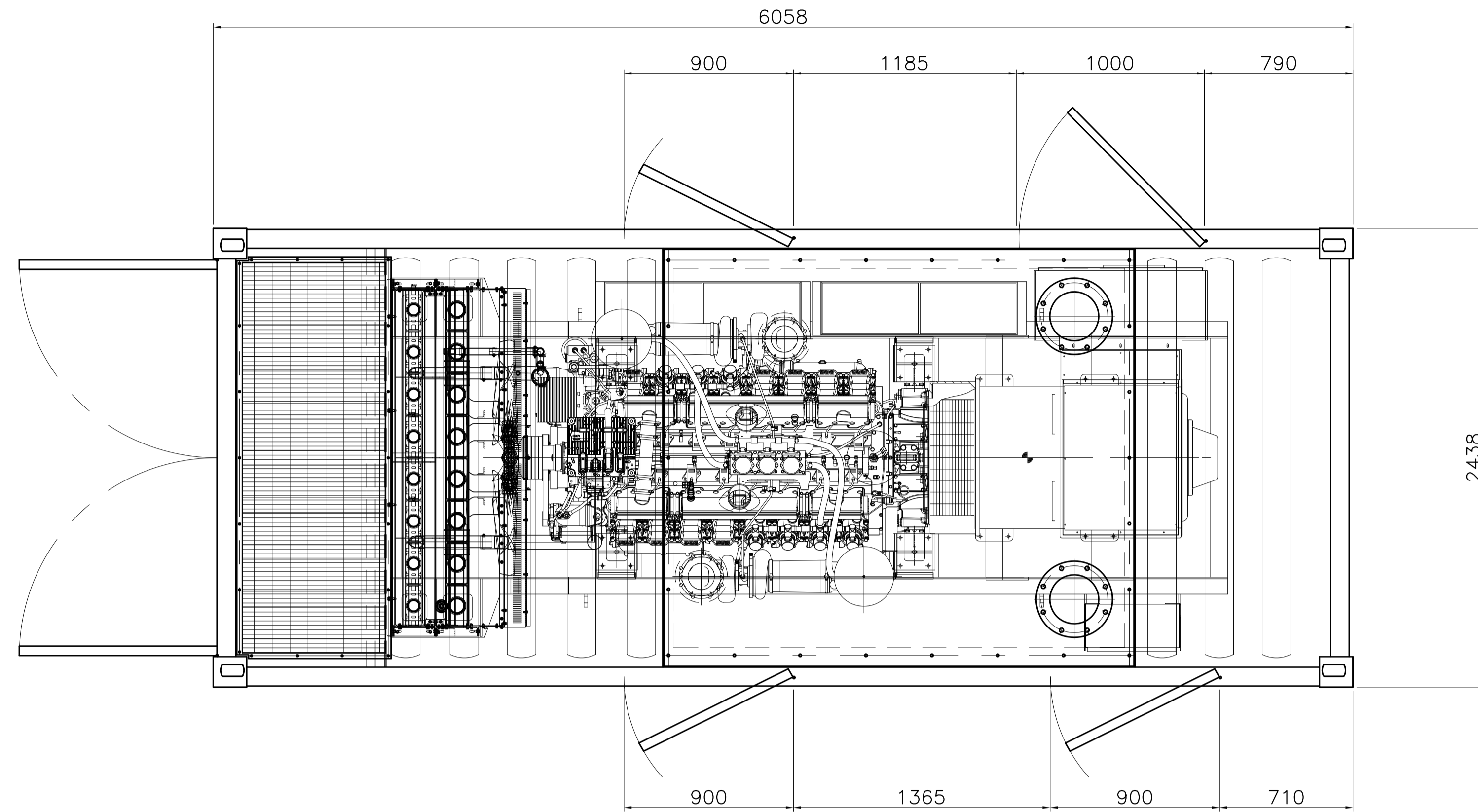
GEN-SET DETAILS:

ENGINE: MTU 16V 2000 SERIES
 ALTERNATOR: NEWAGE HCI 634
 RADIATOR: BEARWARD 5359.....
 OUTPUT: 910kVA - 1250kVA
 (DEPENDANT ON MODEL)

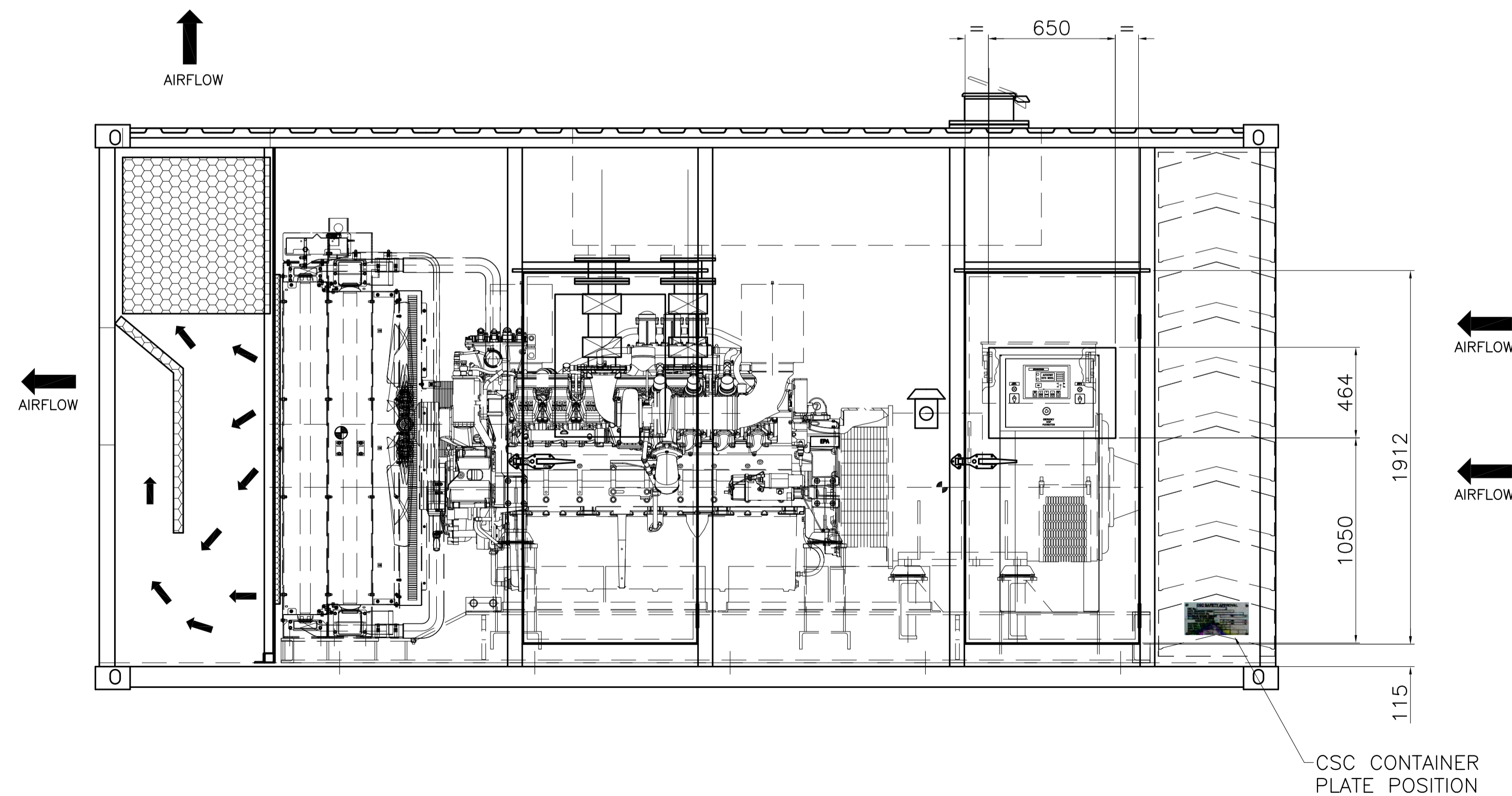
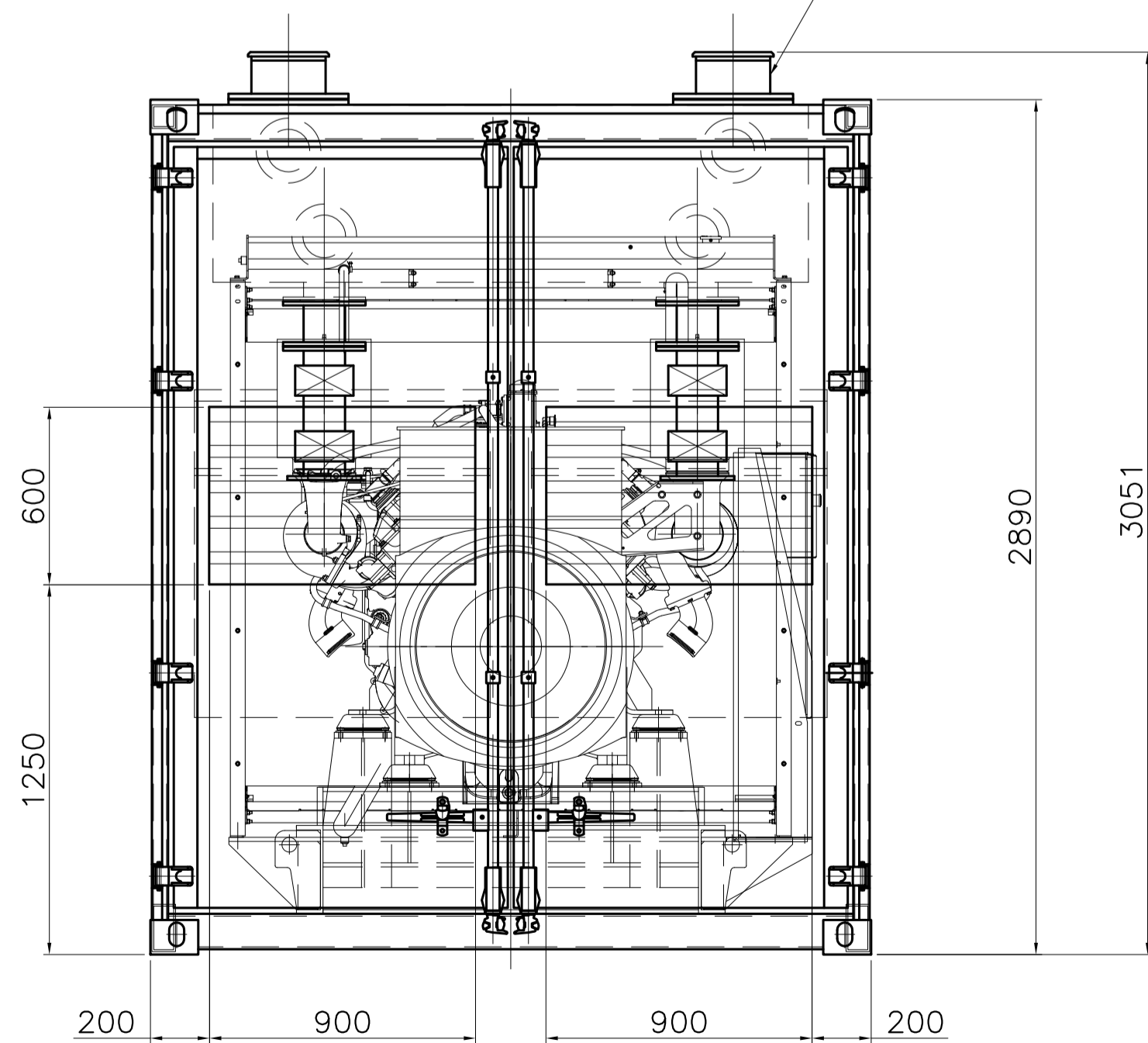
WEIGHTS:-
 ENGINE: 3150kg DRY, 3360kg WET
 ALTERNATOR: 2279kg
 RADIATOR: 508kg DRY, 610kg WET

GENERATOR WEIGHT: 7116kg DRY, 7427kg WET
 CONTAINERISED SET WEIGHT: 10010kg DRY, 10315kg WET
 (DEPENDANT ON MODEL)

NOISE LEVEL - 80dBA MEAN @ 1M ASSUMING FREE FIELD
 CONDITIONS WITH BACKGROUND NOISE NON-CONTRIBUTORY
 AND FOR THE GENSET TO BE RUNNING AT 75% OF THE
 STANDBY RATING.



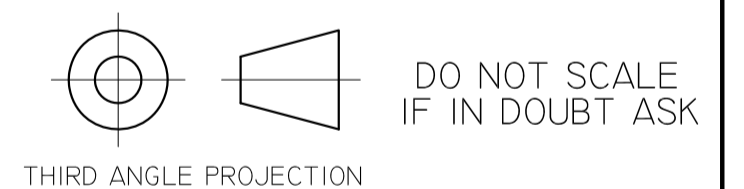
2 X 250mm NB
 EXHAUST TERMINATION WITH RAIN CAP
 (TO BE REMOVABLE FOR TRANSPORT)



No.	ALTERATIONS	CHK'D	DATE

NOTES - MECHANICAL

TOLERANCES:
 GENERAL TOLERANCE + / - 5MM
 FABRICATION + / - 3MM
 HOLE CENTRES + / - 1MM
 OTHER TOLERANCES AS STATED
 WHERE REQUIRED



TITLE: GENSET CONTAINER ARRANGEMENT	
CLIENT: BROADCROWN LTD.	
SITE: -	
W.O. No.: -	ENGINEER: DWM
TYPE: BCMUI000	DRAWN BY: RJW
SCALE: NTS	DATE: MAY, '10
TOTAL No. OF SHEETS (1 - 999) 1	

DRAWING NO.	ISSUE
BCMUI000-AC01-A1	A

broadcrown
 Broadcrown Limited (Group Headquarters)
 Airfield Industrial Estate, Hixon, Stafford,
 ST18 0PF, United Kingdom.
 tel: +44 (0) 1889 272200
 www.broadcrown.com