

D510 C

Automatic Voltage Regulators (AVRs)

Installation and maintenance

D510 C

Automatic Voltage Regulators (AVRs)

This manual concerns the alternator AVR which you have just purchased.

We wish to draw your attention to the contents of this maintenance manual. By following certain important points during installation, use and servicing of your alternator, you can look forward to many years of trouble-free operation.

SAFETY MEASURES

Before using your machine for the first time, it is important to read the whole of this installation and maintenance manual.

All necessary operations and interventions on this machine must be performed by a qualified technician.

Our technical support service will be pleased to provide any additional information you may require.

The various interventions described in this manual are accompanied by recommendations or symbols to alert the user to potential risks of accidents. It is vital that you understand and take notice of the various warning symbols used.

This AVR can be incorporated in a CE-marked machine.

WARNING

Warning symbol for an operation capable of damaging or destroying the machine or surrounding equipment.



Warning symbol for general danger to personnel.



Warning symbol for electrical danger to personnel.

Note: LEROY-SOMER reserves the right to modify the characteristics of its products at any time in order to incorporate the latest technological developments. The information contained in this document may therefore be changed without notice.

D510 C

Automatic Voltage Regulators (AVRs)

CONTENTS

1 - PRESENTATION	4
1.1 - Operation	4
1.2 - Characteristics	8
1.3 - Specifications	8
2 - HUMAN-MACHINE INTERFACE	10
2.1 - Communication	10
2.2 - Analogue I/O	10
2.3 - Digital I/O	10
2.4 - The LEDs	10
2.5 - Wiring scheme	11
3 - SETTING THE FUNCTION PARAMETERS	12
3.1 - Installation	12
3.2 - Startup	12
3.3 - Appearance	12
4 - CONNECTION DIAGRAMS	46
5 - FAULT FLOW CHARTS	48



All servicing or repair operations performed on the AVR should be undertaken by personnel trained in the commissioning, servicing and maintenance of electrical and mechanical components.

Copyright 2009 : MOTEURS LEROY-SOMER

This document is the property of:

LEROY-SOMER.

It may not be reproduced in any form without prior authorisation.

All brands and models have been registered and patents applied for.

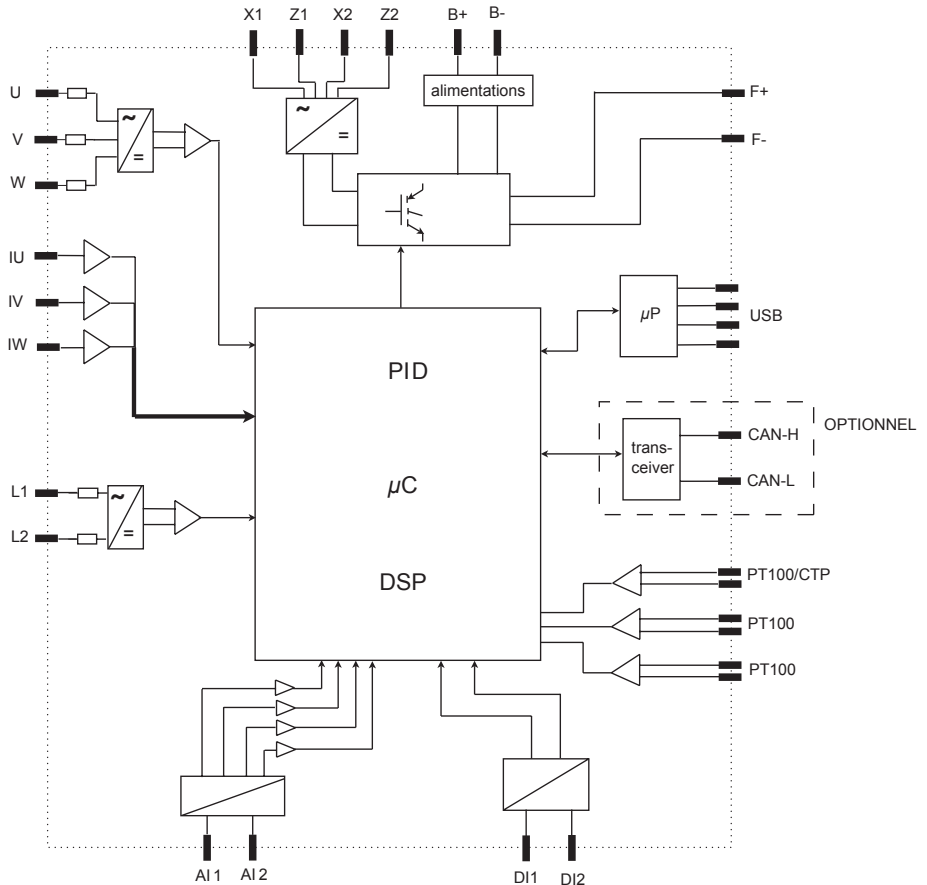
D510 C

Automatic Voltage Regulators (AVRs)

1 - PRESENTATION

1.1-Operation

A schematic diagram of the D510 appears below.



D510 C

Automatic Voltage Regulators (AVRs)

Terminals	Signals	Scheme
X1 X2 Z1 Z2	Power supply - Auxiliary winding input - PMG input - SHUNT input	
L1 L2	Mains voltage measurement	
U V W	Alternator voltage measurement For single-phase: use V and W	
IU = (s1, s2) IV = (s1, s2) IW = (s1, s2)	Alternator current measurement	
AI1 AI2	Analog inputs: External setting	
DI1 DI2	Digital inputs: U=U and PF/kVAR regulation	
B+ B-	DC power supply	

D510 C

Automatic Voltage Regulators (AVRs)

Terminals	Signals	Scheme
F+ F-	Field excitation: 6 A up to 15 A/10 s	<p>The diagram shows a dashed box containing two terminals, F+ and F-. These terminals are connected to a circular component labeled 'Exciter'.</p>
CTP PT100_1 PT100_2 PT100-3	Temperature sensor	<p>The diagram shows a dashed box containing a circuit. A terminal labeled 'PT100' is connected to a temperature sensor. The sensor is connected to a +5V supply through a 4k75 resistor. A 100nF capacitor is connected between the sensor and ground. The output of the sensor is connected to an operational amplifier (op-amp) configured as a buffer. The op-amp is powered by a ±5V supply.</p>
CAN_H CAN_L	CAN BUS	<p>The diagram shows a dashed box containing a microprocessor (μP) and a CAN Transceiver. The transceiver is connected to two terminals labeled 'H' and 'L'.</p>
USB_D+ USB_D-	USB 2.0 communication port	<p>The diagram shows a dashed box containing a microprocessor (μP) and a USB Controller. The controller is connected to four terminals: +5V, D-, D+, and 0V.</p>

D510 C

Automatic Voltage Regulators (AVRs)

• **Power:** It varies according to the type of field excitation (3 types).

- *AREP:* The AVR is powered by two auxiliary windings which are independent of the voltage sensing circuit.

The first winding has a voltage in proportion with that of the alternator and the second has a voltage in proportion with the stator current.

- *PMG:* A permanent magnet generator (PMG) added to the alternator supplies the AVR with voltage which is independent of the main alternator winding.

- *SHUNT:* The AVR is powered by the main winding (140 V – 50/60 Hz).



10A fast fuses externally mounted the D 510C must be used in the three cases.

• **Battery:** This is used to supply the AVR with between 11 V and 30 V. **It must always be present.**



The battery supply must be protected by a 1 A temporised fuse.

• **Mains:** This input is dedicated to the measure phase-to-phase mains voltage which will be taken as the reference when voltage matching is performed.

• **Alternator voltage:** This input measures the alternator output voltage to the AVR in:

- three-phase (U, V, W)
- single-phase (V, W)

• **Current transformer(s):** This input measures the current supplied by the alternator. **It must always be present** when the alternator is running in parallel operation or at PF or KVAR regulation or stator current

limitation.

• The possible configurations are:

- 1 CT on phase U
- 3 CTs on phases U, V and W

• **Temperature sensor(s):** These are used to measure the alternator temperature and alert the user if there is a rise in temperature. This measurement can be taken either with 1 PTC or 3 PT100s.

• **Communication:**

- *USB port:* This is used to connect the AVR to a computer and creates the link between the EasyReg software and the D510.

- *CAN port:* This is used to connect the AVR to a bus CAN interpreter in order to exchange parameters with the D510.

The CAN link is only available in the CAN version identified by the letter C (eg: D510-C).

• **I/O: This part is used to:**

- Enter settings
- Send information from the D510
- Receive information from the alternator

• **LEDs:** These light-emitting diodes inform the user whether the AVR is working correctly or not.

D510 C

Automatic Voltage Regulators (AVRs)

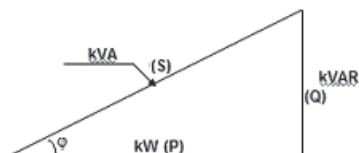
1.2 - Characteristics

The different functions of the D510 are:

- Voltage regulation
- Regulation of the power factor (PF)
- Regulation of the reactive power
- Manual regulation (I_{exc})

• **Voltage regulation:** The D510 regulates the alternator output voltage. Regulation is applied to the mean value or the true rms value (TRMS).

• **Regulation of the power factor:** The D510 regulates the power factor. This is the ratio between the active power ($P = \sqrt{3} \cdot U \cdot I \cdot \cos \phi$) and the apparent power ($S = \sqrt{3} \cdot U \cdot I$).



- *Inductive P.F.* $[0; \pi/2]$ means that the current is lagging behind the voltage. The load is inductive (induction motor, transformer, etc).

- *Capacitive P.F.* $[\pi/2; \pi]$ means that the current is leading the voltage. The load is capacitive (fluorescent lighting, etc).

• **Regulation of the reactive power:** The D510 regulates the reactive power ($Q = \sqrt{3} \cdot U \cdot I \cdot \sin \phi$) at a fixed value.

• **Manual regulation:** The D510 can regulate the excitation current.

These functions are selected when setting the AVR parameters.

1.3 - Specifications

1.3.1 - Characteristics

Name	Minimum value	Maximum value	Adjustable
Battery power supply	11 V	30 V	-
Alternator frequency	10 Hz	100 Hz	Yes
Mains frequency	10 Hz	100 Hz	-
Single-phase mains voltage	50 V	530 V	-
Mains voltage ratio	1	100	Yes
Excitation current	0 A	6 A	-
Max. excitation current	0 A	15 A/10s	-
Single-phase alternator voltage	0 V	530 V	-
Three-phase alternator voltage	0 V	530 V	-
Alternator current input	1 A	5 A	Yes
Alternator I _u	0 A	5000 A	-
Alternator I _v	0 A	5000 A	-
Alternator I _w	0 A	5000 A	-

D510 C

Automatic Voltage Regulators (AVRs)

Name	Minimum value	Maximum value	Adjustable
LAM knee-point	37 Hz*	100 Hz*	Yes*
Adjustable LAM	70% of Voltage reference	100% of Voltage reference	Yes
Variable U/F	1.0	3.0	Yes
Voltage reference setpoint	90 V	530 V**	Yes
Adjustment of external accuracy	- 10%***	+ 10%***	Yes**
Quadrature droop	0%	+ 10%	Yes
Soft start acceleration	0.1 s	120 s	Yes
Loading acceleration	0.1 s/10 Hz	30.0 s/10 Hz	Yes
Voltage drop compensation	0%	10%	Yes
Excitation current manual reference	0 A	10 A	Yes
Rated cosine <i>P.F.</i>	-0.6 (LEAD)	+0.6 (LAG)	Limited by settings
kVAR	-100%	+100%	Limited by settings
Proportional action	0*	1500*	Yes*
Integral action	0*	200*	Yes*
Derivative action	0*	12000*	Yes*
Profit	0*	100*	Yes*
Scale	1/50*	1/1*	Yes*

* in expert mode - ** without voltage transformer - *** 30% in expert mode

1.3.2 - Status and faults

Name	Minimum value	Maximum value	Adjustable
Short-circuit delay	0.5s	10s	no
Short-circuit excitation current demand	0A	10A	no
Underexcitation delay	0.1s	5.0s	no
I EXC SHUT down	0A	5A	no
Overvoltage time	0s	100s	no
Overvoltage threshold	0%	120%	no
PT100 temperature	0°Celsius	250°Celsius	-
PT100 temperature threshold	50°C	200°C	-
PTC input	0%	100%	-

1.3.3 - Environments

Storage temperature : -55°C +85°C

Functioning temperature : -40°C +65°C

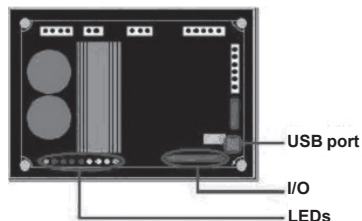
D510 C

Automatic Voltage Regulators (AVRs)

2 - HUMAN-MACHINE INTERFACE

The D510 human-machine interface consists of 3 elements:

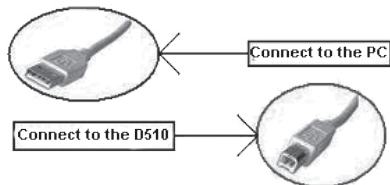
- The USB link
- The I/O
- The LEDs



2.1 - Communication

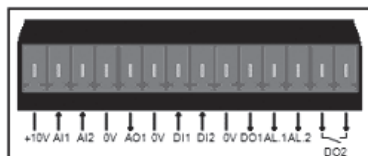
USB link

The EasyReg software and the D510 communicate via a USB cable (Universal Serial Bus).



2.2 - Analog I/O

This part of the board allows the operator to use the inputs to make manual settings and the outputs to check certain data or to indicate whether certain AVR functions are working correctly or not. An external voltage (0 V – 10 V) is present which can be used as a reference for an electronic device.



The minimum analog input setting is 0% and the maximum is 100%.

External by setting is either:

- from an external potentiometer (1k Ω),
- 4 - 20 mA,
- 0 - 10 V,
- \pm 10V.

The two analog inputs can also be used to achieve digital functions + / -.


NB : make sure that the voltage applied on analog input does not exceed 10V.

2.3 - Digital I/O

E/S	Type	Characteristics
D _{I1}	Pull up input	To be connected to 0V
D _{I2}		
DO ₁	Opened collector	Max current: 60mA Voltage: 0 - 24V
DO ₂	Dry contact	6A, 30Vdc/250V AC (on resistor)
AL ₁	Opened collector	Max current: 60mA Voltage: 0 - 24V
AL ₂		

2.4 - LEDs

The LEDs serve to inform the user whether the AVR is working correctly or not.

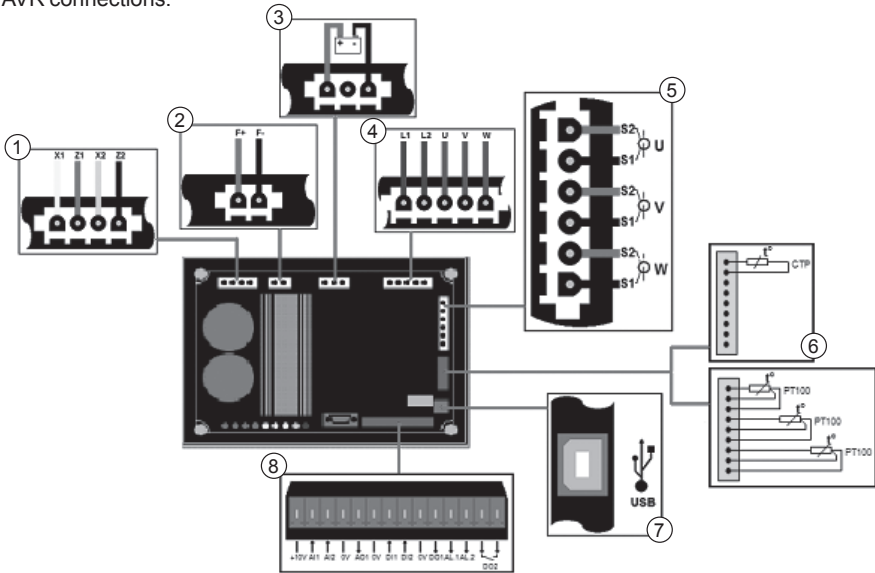
Name	Colour	Meaning
Power ON	Green	The board is supplied with power
↓ Hz	Red	Speed drop
↑ / ↓ Volt	Red	Problem of overvoltage or undervoltage
↑ / ↓ Exc.	Red	Problem of overexcitation or underexcitation
 Fault	Red	Problem on the exciter field diode bridge
Manu	Yellow	Manual mode enabled
PF / KVAR	Yellow	Regulation of the power factor or reactive power enabled
U = U	Yellow	Alternator voltage = Mains voltage
USB	Blue	AVR connected to a PC

D510 C

Automatic Voltage Regulators (AVRs)

2.5 - Wiring scheme

AVR connections:



1- Power :

- AREP : Yellow wire on X2 - red wire on Z1 - green wire on X1 - black wire on Z2
- PMG : X2, X1 and Z2
- SHUNT : X1 and X2

2- Field excitation: The field winding + to the terminal F+
The field winding - to the terminal F-

3- Battery: Ensure the polarity is correct when connecting

4- Voltage sensing:

- Mains voltage: L1 and L2
- Alternator voltage: - single-phase: V and W
- three-phase: U, V and W

5- Current transformer(s):

- Placing in parallel and measurement: CT on U
- Measurements: CTs on V and W

6- Temperature sensor:

- PTC: see mounting above
- PT100: see mounting above

7- USB port

8- Digital I/O

D510 C

Automatic Voltage Regulators (AVRs)

3 - SETTING THE FUNCTION PARAMETERS

EasyReg is a Leroy Somer Software which allows to :

- Easily configure the digital regulator D510
- Monitor several important parameters such as alternator output voltage, excitation current, active and reactive power, etc...
- Optimize the regulation loop

- Set the AVR parameters.
- Configure the inputs and outputs.
- Display faults and parameter measurements.

It is the interface between the user and the digital AVR.

3.1 - Installation

Double click on the installer EasyReg and follow the installation instructions.

3.2 - Startup

Connect the AVR to the computer with a USB cable. Check that the blue «USB» LED is on.

To start the software, go to «Start», «Programs» then «EasyReg».



3.3 - Appearance

The regulator is connected to the PC via standard USB cable, the blue LED (labeled LED) of the regulator is then ON and the information « D510C CONNECTED » is displayed on the screen left bottom.



D510 C

Automatic Voltage Regulators (AVRs)

There are four options when using this software:

- New configuration
- Open a configuration from a file
- Open a configuration from the pre-programmed AVR.
- Create customised configuration (Expert mode)



If the AVR is not connected or has never been configured, it is impossible to «Open from a D510».

PROPERTIES

The user can choose to lock the regulator to avoid the configuration modification. In that case, the configuration name and a lock code must be entered.

PRINT

The configuration can be edited in a Word or PDF format file.

3.3.1 - Languages and modes

3.3.1.1 - Languages

Three languages are available on EasyReg: French , English and German.



D510 C

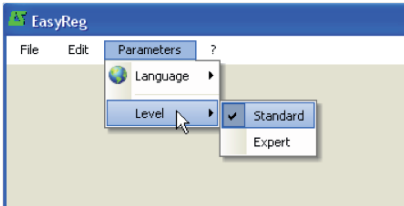
Automatic Voltage Regulators (AVRs)

3.3.1.2 - Modes

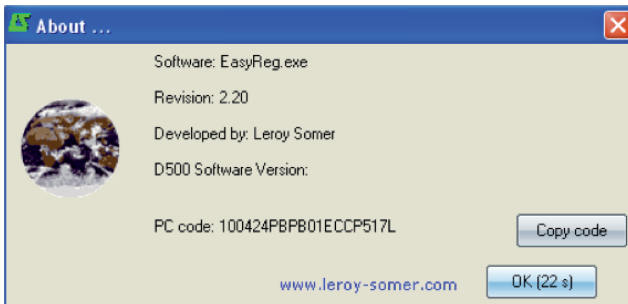
Two operation modes are possible:

- Standard mode by default
- Expert mode which offers additional functions

This mode is reserved for users who possess the skills to make certain more complex adjustments or to use the AVR in a wider range of operating conditions.



If you require the Expert mode access code, please use the main menu: click on « ? » then « About... ». The following window is displayed



Click on « Copy code » and email the PC code to: SupportTechniqueSillac.IALS@Emerson.com
The access code will be sent you back.

⚠ Incorrect settings can harm the AVR and the alternator and can cause serious damage (to users, loads). Select the duty type and the class according to your specification.

3.3.2 - Saving and loading the configuration

Save your configuration (for the 1st time):

- Go into the «File» menu and click «Save As»
- Choose where you wish to save to
- Name your saved configuration
- Click Save As

Subsequently, to save the configuration, you just need to go into the «File» menu and click «Save».

D510 C

Automatic Voltage Regulators (AVRs)

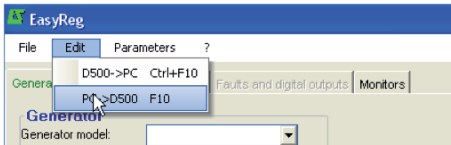
Send the configuration to the AVR:

- check that the AVR is connected correctly (blue LED on) at the bottom left-hand side of the screen.
- go into the «Edit» menu.

- Go to : • PC --> D510
- D510 --> PC

- click « PC --> D510 ».

Wait for loading to complete.



to the «Regulation Mode» page is only possible if the «Alternator Configuration» page has been filled in. The program is transferred to the D510 via the «Edit» menu then «PC => D510» or by pressing F10 on the keypad.

This software must be used in the order indicated below:

1. Alternator configuration
2. Regulation mode:
 - Voltage regulation
 - Underspeed settings
 - Other types of regulation (PF, reactive power, manual) depending on the user's selections.
3. Faults and digital outputs
4. Monitors

3.3.3 - New configuration

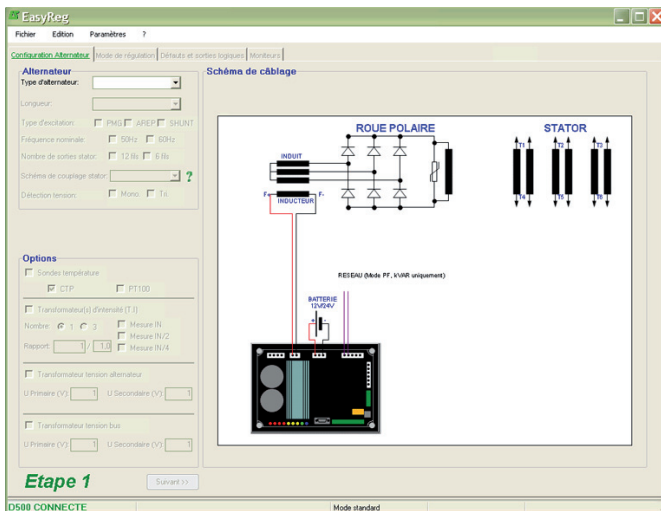
There are two possible configuration levels: standard or expert.

By default, the software is in standard mode. The AVR is programmed step by step. Access

3.3.3.1 - Alternator Configuration

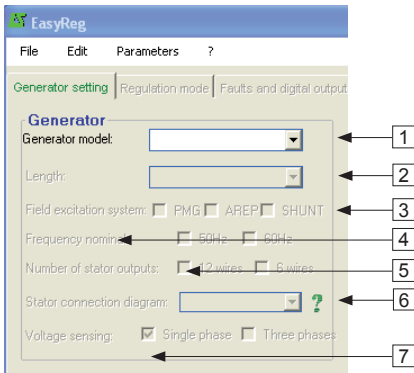
Open «New configuration» from the menu bar, which takes you to the «Alternator Configuration» window. The parameters for this page are set in two parts: Alternator, Options.

The wiring scheme varies according to the characteristics specified by the user.



D510 C Automatic Voltage Regulators (AVRs)

• **Alternator**



In the dropdown lists or boxes, select:

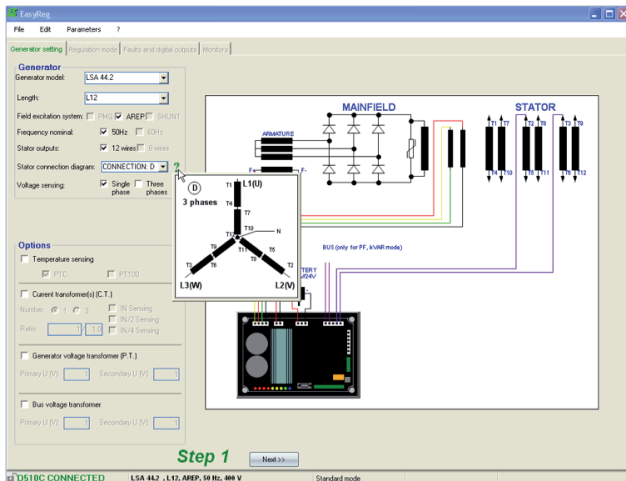
1. The **type of alternator**
2. The **length**
3. The **type of field excitation**
4. The **frequency**
5. The **number of stator outputs**
6. The **stator connections**
7. The **voltage sensing (single or three-phase)**

Note: The information relating to items 1, 2, 3 and 4 can be found on the nameplate.

[Expert mode]: the alternators list is more expanded. In this mode it is also possible to select the Service, the temperature rise class and the alternator power.

NB: FF and G electrical connections are dedicated to single phase application, no three-phase sensing is possible.

Stator connections: Click on the question mark to get help on the stator connections.



The alternator configuration is recalled at the screen left bottom

D510 C

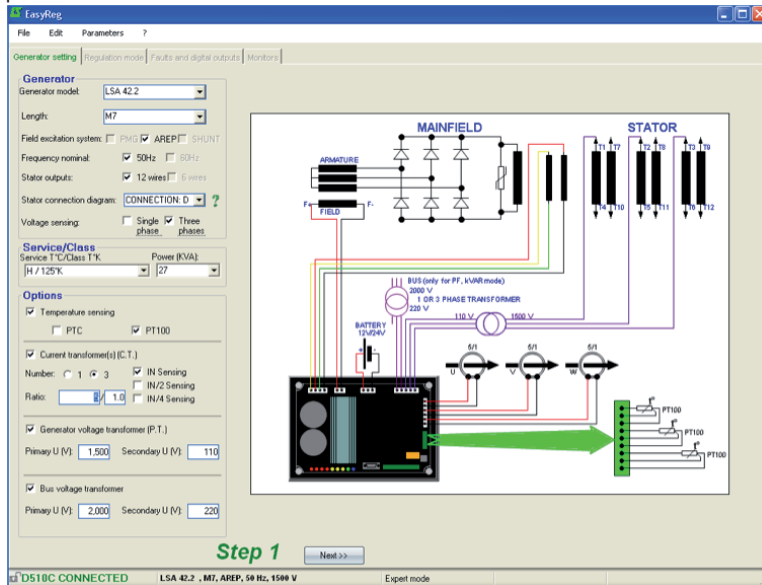
Automatic Voltage Regulators (AVRs)

• Options

To obtain the following options, tick the boxes:

- Temperature sensors**, select either 1 PTC or 3 PT100s.
- Current transformers (CTs)**, select the number (1 or 3), the measurement (IN, IN/2 or IN/4) and the ratio. unless one CT is mandatory for parallel operation, PF or kVAR regulation, stator over current, unbalanced current.
- Alternator voltage transformer**, enter the voltage values at the primary and at the secondary if a transformer is connected..
- Bus voltage transformer**, enter the voltage values at the primary and at the secondary if a transformer is connected.

The electrical schematic below shows how the «wiring scheme» part changes according to the parameters selected.



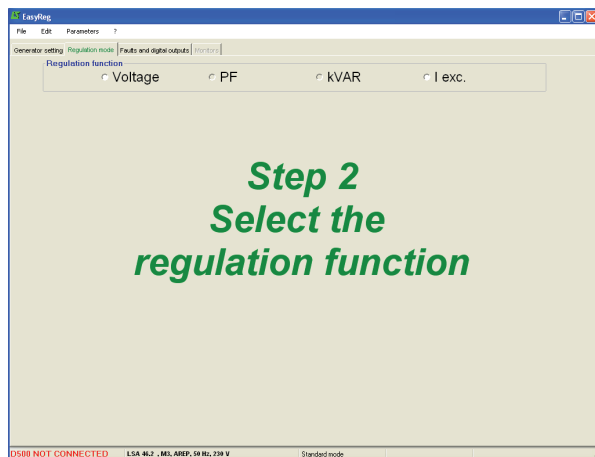
After entering the data in this page, go to the second page by clicking «Next». In some cases, you will need to adjust the workscreen in order to access the «Next» button.

D510 C

Automatic Voltage Regulators (AVRs)

3.3.3.2 - Regulation mode

After entering the «Alternator Configuration» part settings, fill in the «Regulation Mode» part.



4 types of regulation are offered:

- Voltage
- Power factor (P.F.)
- Reactive power (kVAR)
- Manual (I exc)

Always setting begins with voltage regulation.

Caution, regulation of the reactive power PF and the quadrature droop can only be enabled if there is a CT on phase U and it has been selected.

D510 C

Automatic Voltage Regulators (AVRs)

A - Voltage regulation

This page consists of two parts :

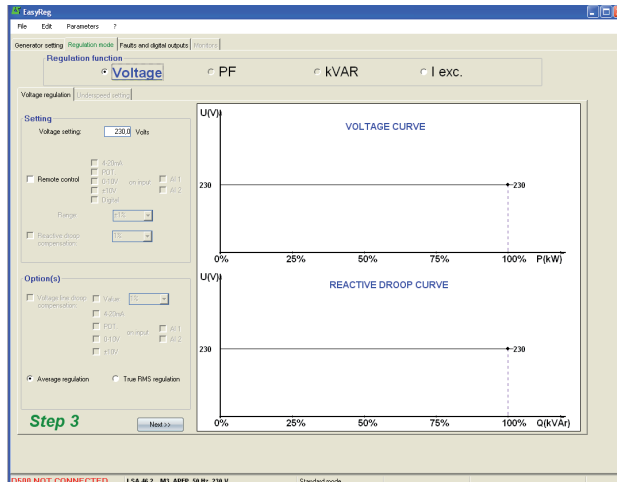
- Voltage Regulation
- Underspeed settings

Setting the parameters for this part starts with the «Voltage regulation» page and ends with the «Underspeed settings» page.

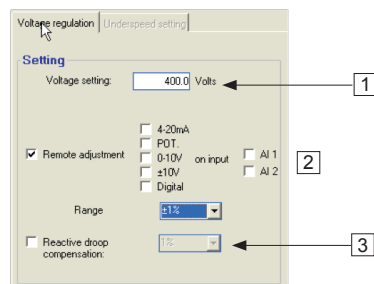
A1 - Voltage regulation

This page is split into two parts:

- Settings
- Options



A1.1 - Settings



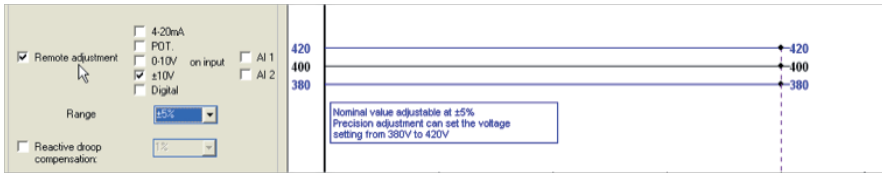
1. The displayed value comes from Easyreg® database. It can be adjusted in the range $\pm 10\%$ maximum.

Expert Mode: The adjustment range can be extended to $\pm 30\%$

D510 C

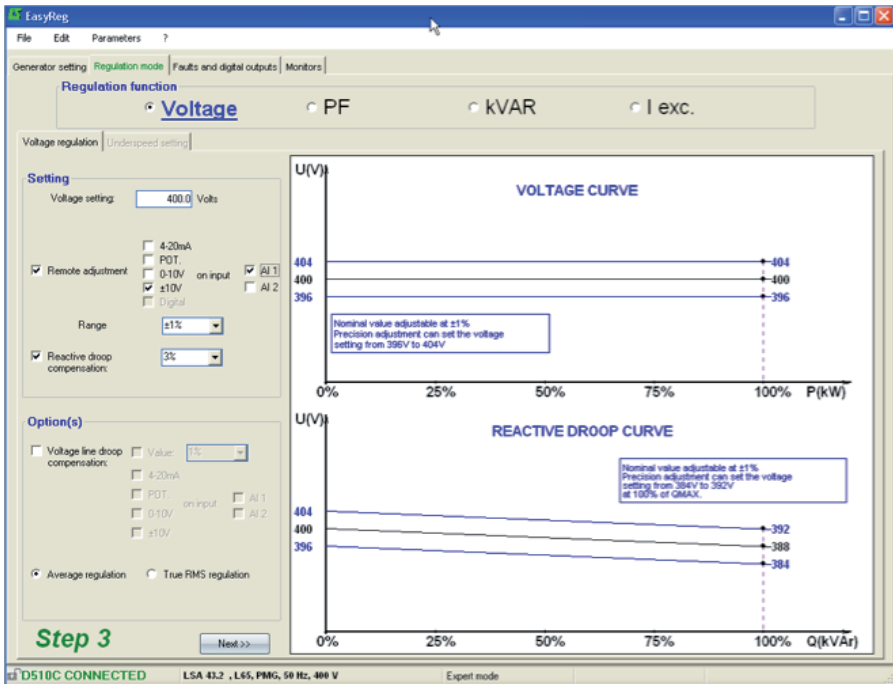
Automatic Voltage Regulators (AVRs)

2. To set the voltage externally, tick the box, define by what means (POT, 0-10 V, etc) this setting will be made as well as the selected input (AI1 or AI2), then enter the desired setting range.



3. If you wish to have voltage quadrature droop, tick the box and select the quadrature droop percentage.

This function is only available if a CT is used. It can be adjusted up to 10% maximum.

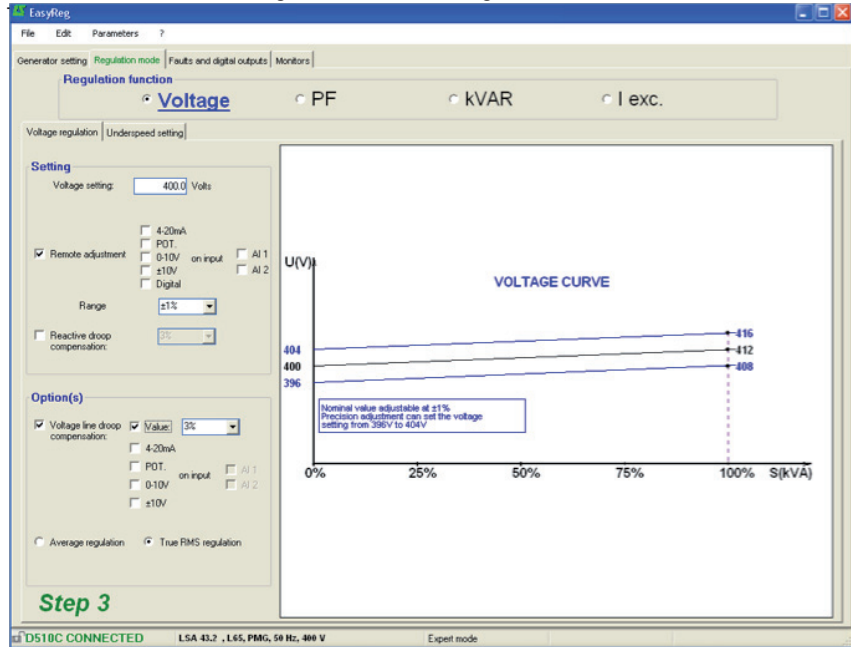


D510 C

Automatic Voltage Regulators (AVRs)

A1.2 - Options

1. If you wish to have line drop compensation, tick the box and select the type of setting by a % value or an external setting. The standard setting is 3%.



The function « Voltage line droop compensation » cannot be simultaneously activated with « reactive droop compensation ».



It is possible to impose the desired compensation by direct entry of the % value or make an external adjustment (10% max)

2. Select which value regulation should apply to :

- mean value
- true rms value

To go to the next step « Underspeed settings », click «Next».



D510 C

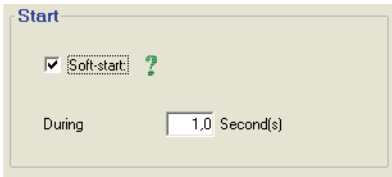
Automatic Voltage Regulators (AVRs)

A2 - Underspeed settings

This page is split into three parts:

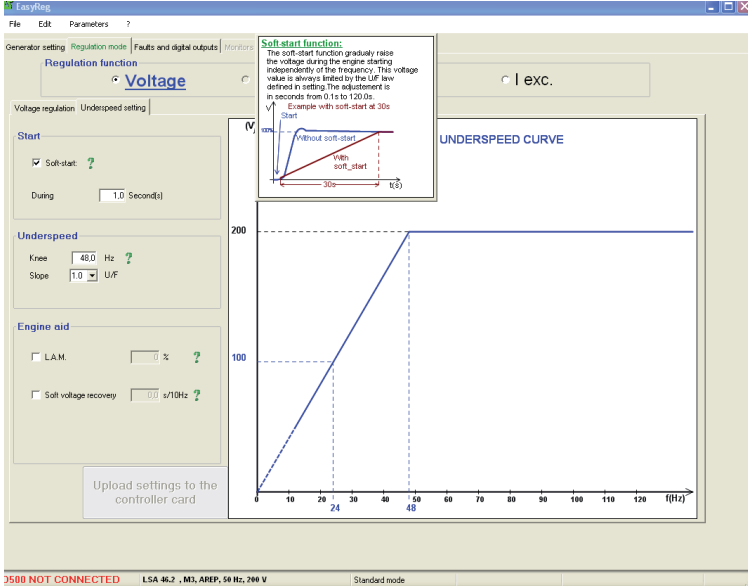
- Starting
- Underspeed
- Engine

A2.1 - Starting



Factory setting: disabled

To adjust Soft-start, check the box and select the duration between 0.1 s and 120 s (1 step = 0.1 s). Clicking on the question mark give help information on this function.



D510 C

Automatic Voltage Regulators (AVRs)

A2.2 - Underspeed

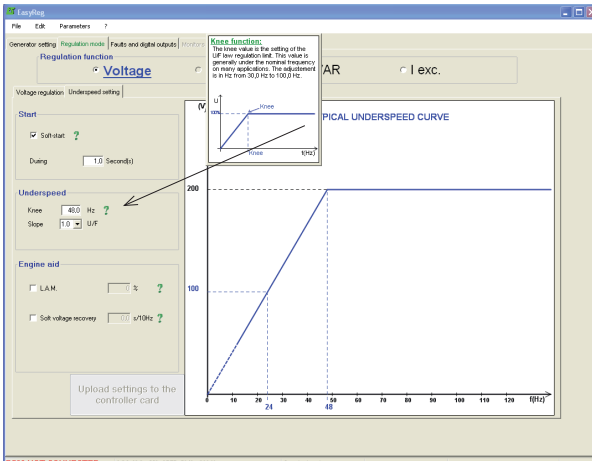
Underspeed

Knee: 48,0 Hz ? ← 1

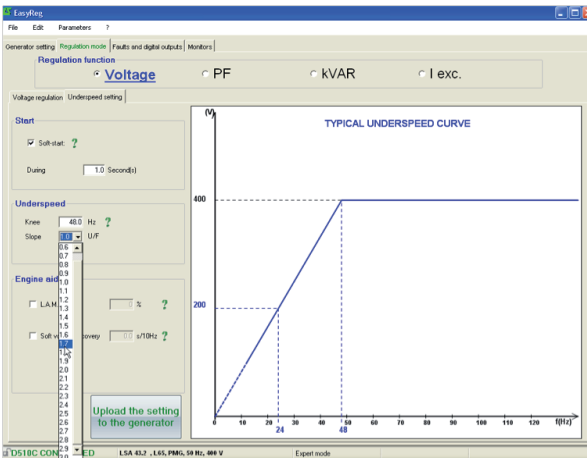
Slope: 1.0 U/F ← 2

Factory setting: 48 Hz for 50 Hz
58 Hz for 60 Hz

1. Enter the knee-point value between 47.5 and 52.5 Hz (1 step = 0.1 Hz). An error message appears when the value displayed is outside the permitted range. The extended range is accessible in expert mode.



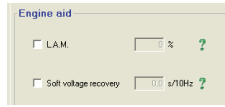
2. Enter the gradient value between 1.0 and 3.0 U/F (1 step = 0.1 U/F). Factory setting: 1/U/F.



D510 C

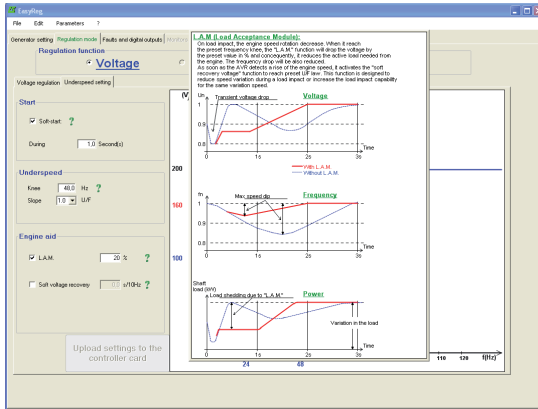
Automatic Voltage Regulators (AVRs)

A2.3 - Motor help

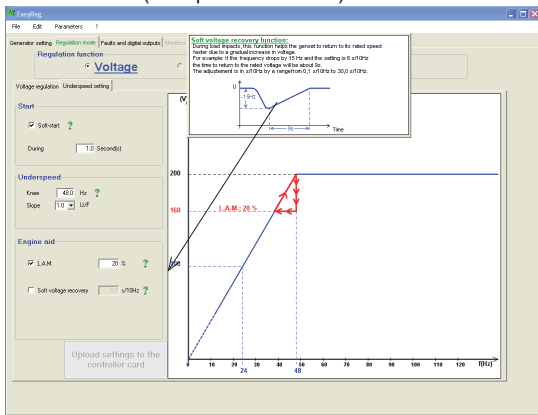


1. If the LAM function is required, tick the box and select its value between 0% and 30% (1 step = 1%).

Recommended setting: LAM 9% - U/F 1.7%



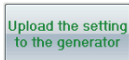
2. If you wish to have a gradual increase, tick the box and select the value between 0.1 s/10 Hz and 30.0 s/Hz (1 step = 0.1 s/10 Hz).



Save (see section 3, «Save» part).

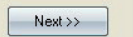
Load the configuration in the regulator :

- By clicking on the button
- Or by using the key F10
- Or PC→D500 in « Edition » menu



To configure another function, click the «Next» button and go to the corresponding page in this manual.

Step 4



D510 C

Automatic Voltage Regulators (AVRs)

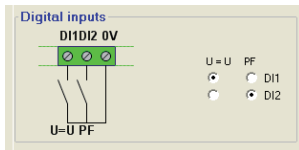
B - Regulation of the power factor

Caution: You can only enable selection of regulation by power factor PF or selection of regulation of the reactive power KVAR, and the quadrature droop, if there is a CT on phase U which has been enabled on the alternator configuration page.

This page is split into two parts:

- Digital inputs
- Settings

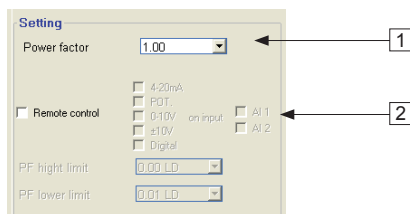
B1 - Digital inputs



Check the digital input on which the voltage match circuit has been placed in order to enable it. The second digital input is reserved for enabling power factor regulation mode.

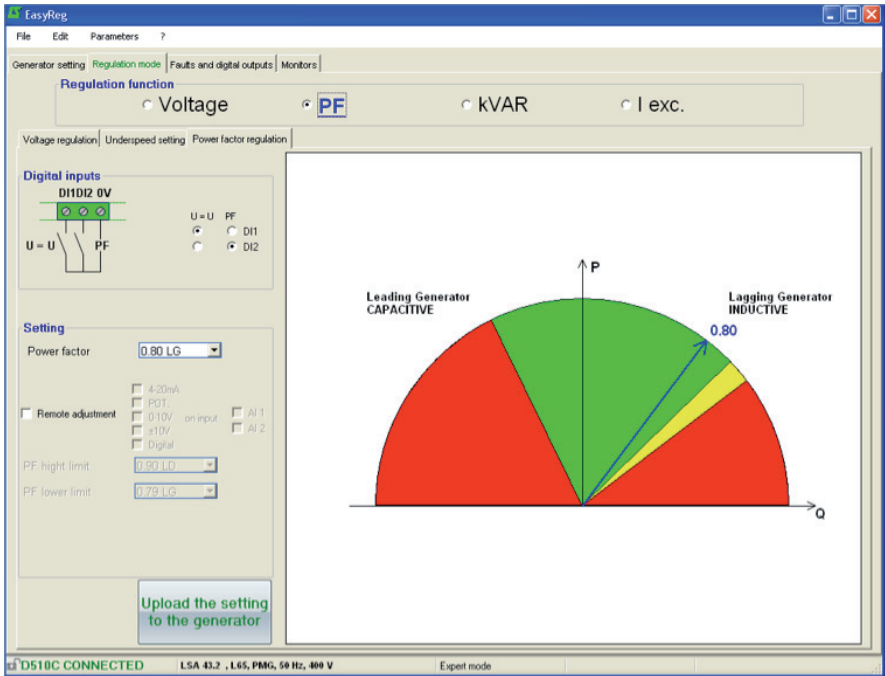
B2 - Settings

It is possible to set a fix value or use a remote adjustment in a predefined range.



1. Select the power factor value.
The value depend on the alternator type.

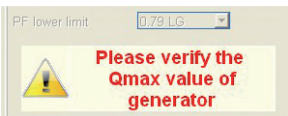
D510 C Automatic Voltage Regulators (AVRs)



- Database Authorized area
- Database not recommended area
- Forbidden area

It is impossible to enter a reference value outside the limit values which are automatically set from the data on the alternator database.

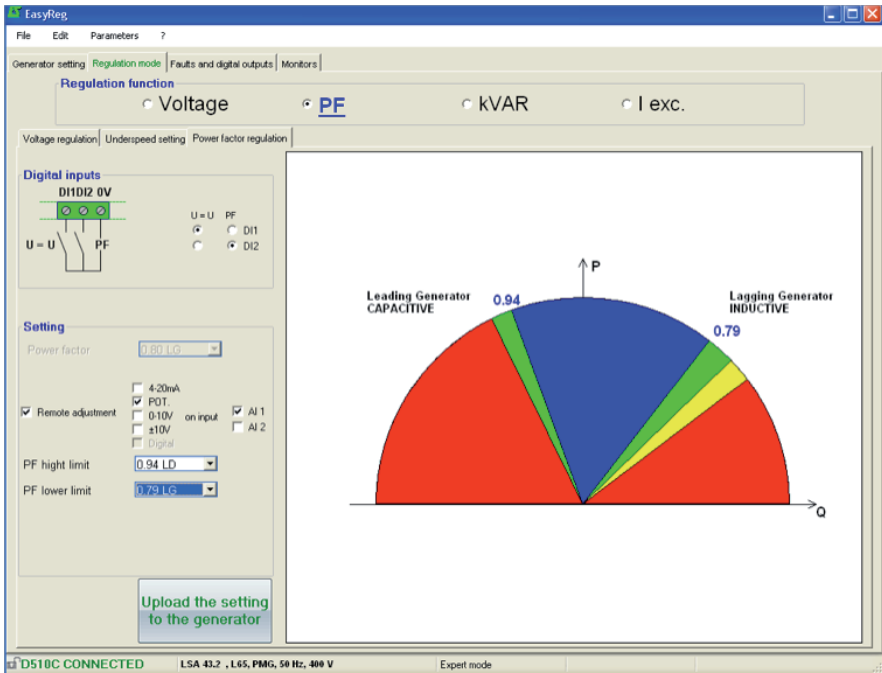
Warning: When a value is outside the database recommended area, a message appears as indicated below.



D510 C

Automatic Voltage Regulators (AVRs)

2. To set the power factor externally, tick the box, select the source (POT, 0-10 V, etc) for this setting and also the input (AI1 or AI2). One of the inputs may be greyed-out if it is already being used by another function.



- Remote adjustment operation area
- Database Authorized area
- Database not recommended area
- Forbidden area

Save (see section 3, «Save» section).
Load the settings into the AVR by clicking the following button :

Upload settings to the controller card

D510 C

Automatic Voltage Regulators (AVRs)

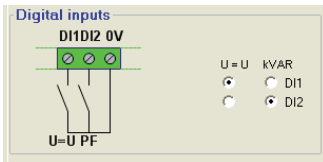
C - Regulation of the reactive power kVAR

Caution, regulation of the reactive power PF, and the quadrature droop can only be enabled if there is a CT on phase U and it has been configured.

This page is split into two parts:

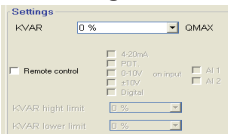
- Digital inputs
- Settings

C1 - Digital inputs



Check the digital input on which the voltage match circuit has been placed in order to enable it. The second digital input is reserved for enabling reactive power regulation mode.

C2 - Settings

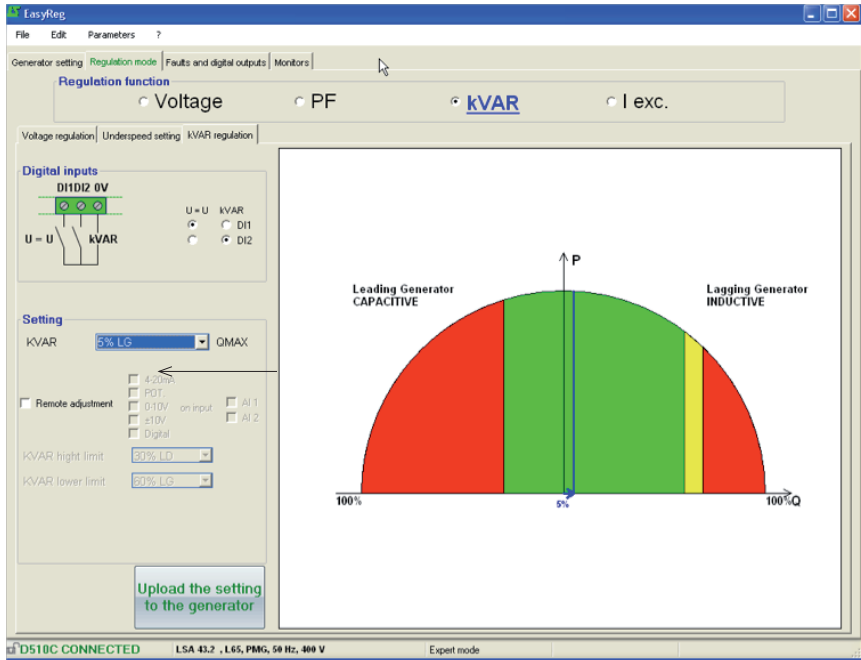


1. Select the value of the reactive power according to the load. This value depends on the alternator type.

D510 C

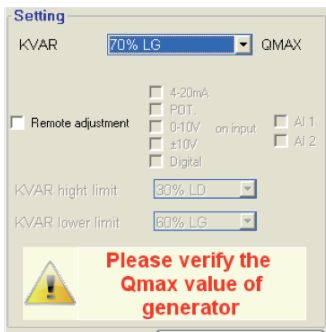
Automatic Voltage Regulators (AVRs)

It is possible to set a fix value or use a remote adjustment in a predefined range.



■ Database Authorized area ■ Database not recommended area ■ Forbidden area

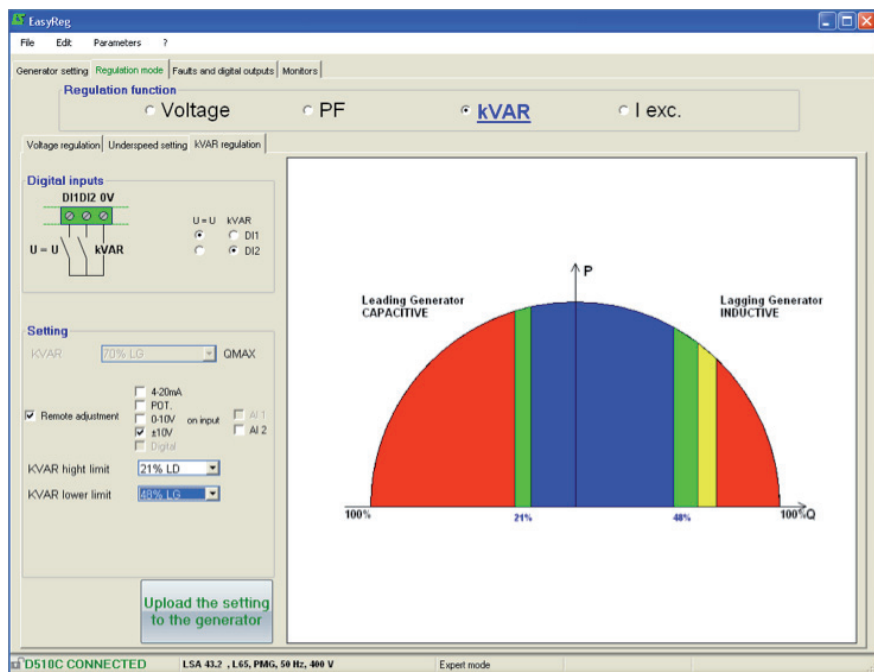
Warning: When a value is outside the database recommended area, a message appears as indicated below.



D510 C

Automatic Voltage Regulators (AVRs)

2. To set the reactive power externally, tick the box, select the source (POT, 0-10 V, etc) for this setting and also the input (AI1 or AI2). One of the inputs may be greyed-out if it is already being used by another function.



- Remote adjustment operation area
- Database Authorized area
- Database not recommended area
- Forbidden area

Save (see section 3, «Save» part).

Load the settings into the AVR by clicking the appropriate button.

Upload settings to
the controller card

D510 C

Automatic Voltage Regulators (AVRs)

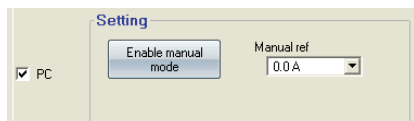
D - Manual regulation: I exc

This page is split into three parts:

- PC (settings)
- External control
- Follower mode

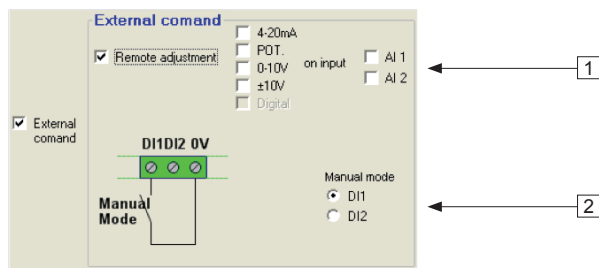
The manual mode can be activated and adjusted either with the PC (via EasyReg software) or remotely. In that last case, a switch allowing the activation/ deactivation of the manual mode must be connected to one of the digital inputs and the excitation current setting is achieved by the remote analogue device through the AI1 or AI2.

D1 - PC



Enter the desired excitation current value between 0.0 A and 10.0 A (1 step = 0.1 A). Manual mode is enabled by clicking the corresponding button.

D2 - External control



1. To set the excitation current externally, tick the box, select the source (POT, 0-10 V, etc) for this setting and also the input (AI1 or AI2). One of the inputs may be greyed-out if it is already being used by another function.

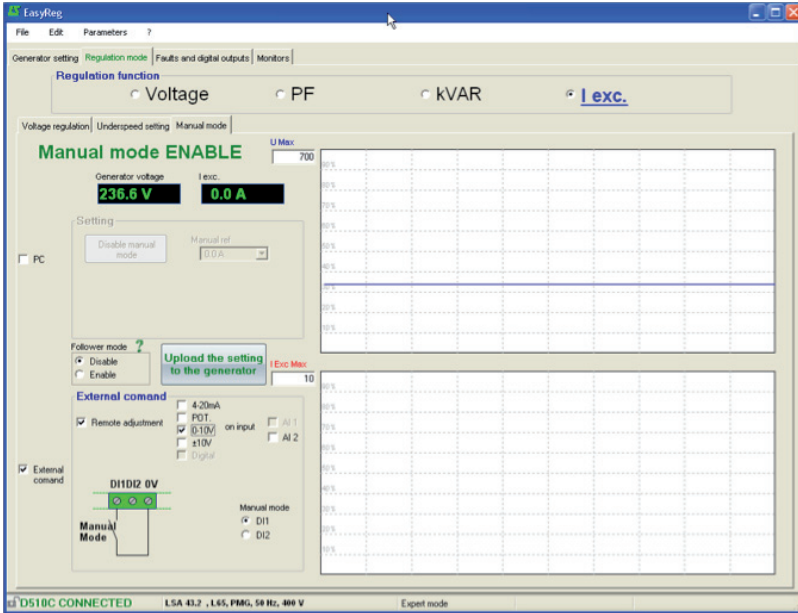
2. Check the digital input on which manual mode has been placed in order to activate it.

D510 C

Automatic Voltage Regulators (AVRs)

D3 - Follower mode

If this function is enabled, it allows to switch in manual mode with initial setting value as a copy of the last excitation current measurement before the switching.



Save (see section 3, «Save» part).

Load the settings into the AVR by clicking the button :

Upload settings to the controller card

D510 C

Automatic Voltage Regulators (AVRs)

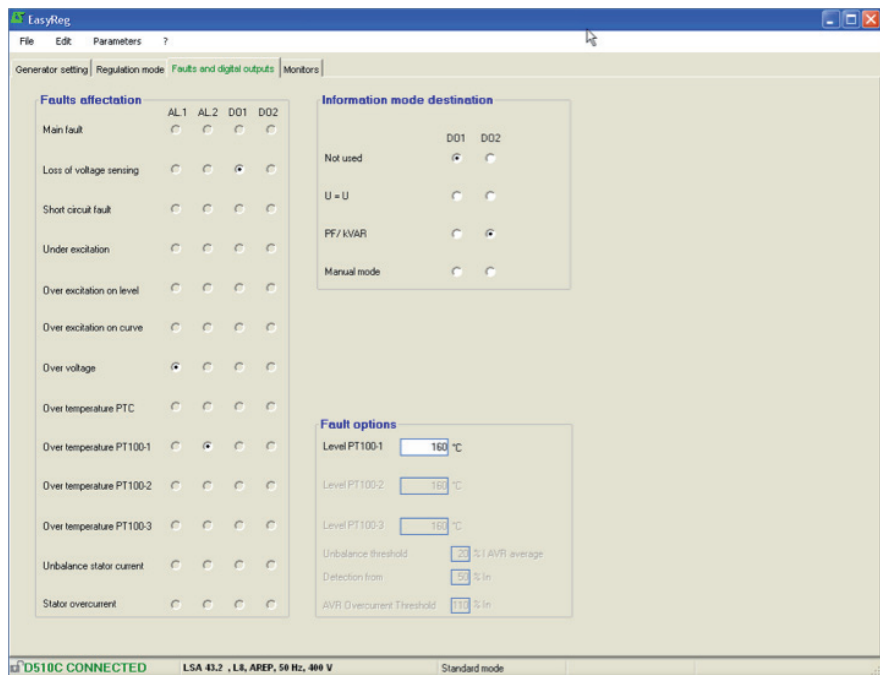
3.3.3 - Faults and digital outputs

This page is split into three parts in standard mode:

- Assignment of faults
- Assignment of digital outputs
- faults options

Faults affectation

The main faults can be supervised by assigning them to digital outputs.



NOTA : The fault « Unbalance current » is only selectable if 3 CT are checked.

This page offers the possibility of assigning faults and operating modes to 4 outputs (AL1, AL2, D01 and D02).

Example of settings:

- Assignment of «Overvoltage» fault to AL1
- Assignment of «PT100-1 overtemperature» fault to AL2 with the maximum temperature set at 200°C
- Assignment of «Loss of voltage sensing» fault to D01
- Assignment of «PF/kVAR» digital output to D02

D510 C

Automatic Voltage Regulators (AVRs)

Faults options

It is possible to configure the thresholds for triggering certain faults:

- On temperature measurement (PT100)
- On stator current unbalance: it is possible to set the level for sensing and unbalancing level compare to the current mean value.
- On Stator Overcurrent: The current level above which the fault is activated can be set.

Information mode destination

The digital outputs DO1 and DO2 are assigned to « U = U », « PF / kVAR » and « manual mode » in priority.

The Expert mode offers other functions

The screenshot shows the EasyReg software interface for the D510C AVR. The interface is divided into several panels:

- Faults affectionment:** A grid of radio buttons for AL1, AL2, DO1, and DO2, with columns for Main fault, Loss of voltage sensing, Short circuit fault, Under excitation, Over excitation on level, Over excitation on curve, Over voltage, Over temperature PTC, Over temperature PT100-1, Over temperature PT100-2, Over temperature PT100-3, Unbalance stator current, and Stator overcurrent.
- Information mode destination:** Dropdown menus for DO1 and DO2, with options: Not used, U = U, PF / kVAR, and Manual mode.
- Enable/disable of faults:** Checkboxes for: Loss of voltage sensing, I exc. protected, Over voltage protected, Grid Code Function, and Nominal field current (set to 4.0 A).
- Start on Threshold:** An 'Enable' checkbox, a '% initial PwM' input field (0.00), and an 'Activation threshold (M)' input field (0).
- Fault options:** Input fields for: Level PT100-1 (185 °C), Level PT100-2 (162 °C), Level PT100-3 (104 °C), Unbalance threshold (25 % I AVR average), Detection time (50 % In), and AVR Overcurrent Threshold (110 % In).
- Logical Input/output:** Checkboxes for: Inversion of DI1, Inversion of DI2, Inversion of DO1, Inversion of DO2, Inversion of AL1, and Inversion of AL2. A 'Digital external setting memorization' checkbox is also present.

A 'D510C OPTIONS' button is located at the bottom right. The status bar at the bottom shows 'D510C CONNECTED', 'LSA 43.2, L65, PMS, 50 Hz, 400 V', and 'Expert mode'.

D510 C

Automatic Voltage Regulators (AVRs)

- **[Expert mode] Start on Threshold**

Activate and set this function.

- **[Expert mode] Enable/disable of Faults**

Allows to activate/deactivate the regulator protections (overvoltage, over-excitation,...).

- **[Expert mode] Grid Code Function**

Allows to activate/deactivate this function.

- **[Expert mode] Nominal excitation current**

This value comes from the database but can be changed by the user

- **[Expert mode] digital input/ outputs**

It is possible to reverse these digital IOs.

- **[Expert mode] Digital external setting memorization**

This function is use in « +/- » mode; it allows to keep the regulation mode adjustment when passing from one mode to another regulation mode.

3.3.4 - [Expert mode] D510C Options

The regulator D510C offers several functions accessible by clicking on the button

**D510C
OPTIONS**

- **[Expert mode] rotating diode bridge fault**

Activate/deactivate the rotating diodes state supervision of exciter

In case of the supervision of activation of this feature, the « shutdown lexc » function must be also enabled.

- **[Expert mode] Generator current limitation**

Set this function

- **[Expert mode] CAN network configuration**

Enable CAN

Set the data transfer rate

Choose the regulator identifier

Select the broadcast protocol (J1939 and/or Owner CAN)

In the case of Owner CAN, choose the parameters to broadcast.

D510 C

Automatic Voltage Regulators (AVRs)

D510 Options

Rotating diode bridge fault

Enabled Disabled

DIODE Fault

Shutdown Iexc ?

Generator current limitation

Enabled Disabled

Current limitation

Current limitation value (%In)

Regulation gain

CAN Network configuration

Enabled Disabled

Data transfer Rate CAN activation delay (s)

D510 ID ?

Broadcast parameters Broadcast J1939 ?

Broadcast sent parameters ?

Parameter 1	<input type="text" value="Grid input frequency"/>	Sending period (ms)	<input type="text" value="50"/>
Parameter 2	<input type="text" value="Iexc measure"/>		
Parameter 3	<input type="text" value="Generator voltage one phase"/>		
Parameter 4	<input type="text" value="Led state"/>		

Click on OK to validate the configuration

Click on OK and Upload

Nota: the key F10 doesn't allow to transfer the CAN parameters.

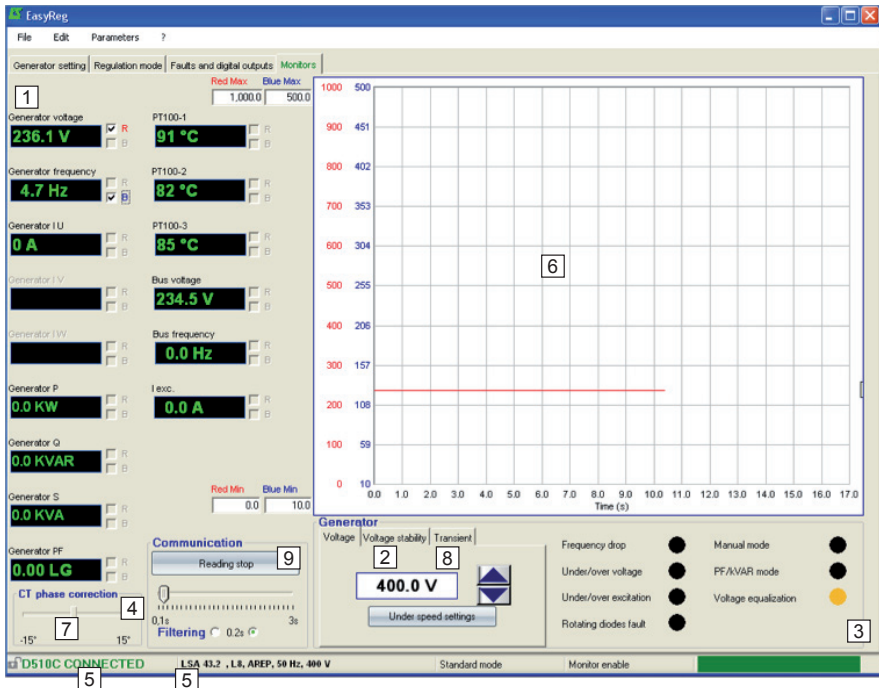
Nota: The selection « Broadcast J1939 » locks the transfer rate at 250Kb/s

D510 C

Automatic Voltage Regulators (AVRs)

3.3.5 - Monitors

This page is only displayed when the AVR is connected to the computer. It consists of 15 digital control screens (voltage, frequency, current, etc), an analogue screen, 3 adjustment tabs (voltage, voltage stability and transient test) and displays the LED states.



1. The 15 windows display the alternator values compared to the enabled options.
By selecting 1 CT you can display: Alternator I U, Alternator P, Alternator Q, Alternator S, Alternator PF.
By selecting 3 CTs you can also display: Alternator I V, Alternator I W.
By selecting PT100 temperature sensors you can display: PT100-1, PT100-2, PT100-3.
2. Click this button to adjust the stability.
3. This part displays the LED status.
4. Click on the button «start reading» to display the values. The filtering parameters can also be set.

D510 C

Automatic Voltage Regulators (AVRs)

5. These 2 indications show that the AVR is connected and its characteristics have been selected.

6. 2-signal display screen. Simply tick in one of the boxes (R or B) and set the scale (Max-Min).


7. The CT phase angle should be compensated to improve the accuracy of the display by moving the «CT phase angle correction» slider.

8. Transient test:  **Do not start this test if in load operation.**

- Click on «Transient test»,
- The test voltage level setting window appears,
- Enter the values, confirm, wait for the process to end.

Note: Set the minimum and maximum values within the range permitted by the generator voltage sensing device.

9. To start reading, click «Start reading». The filter value can be adjusted by 0.1 s to 3 s.

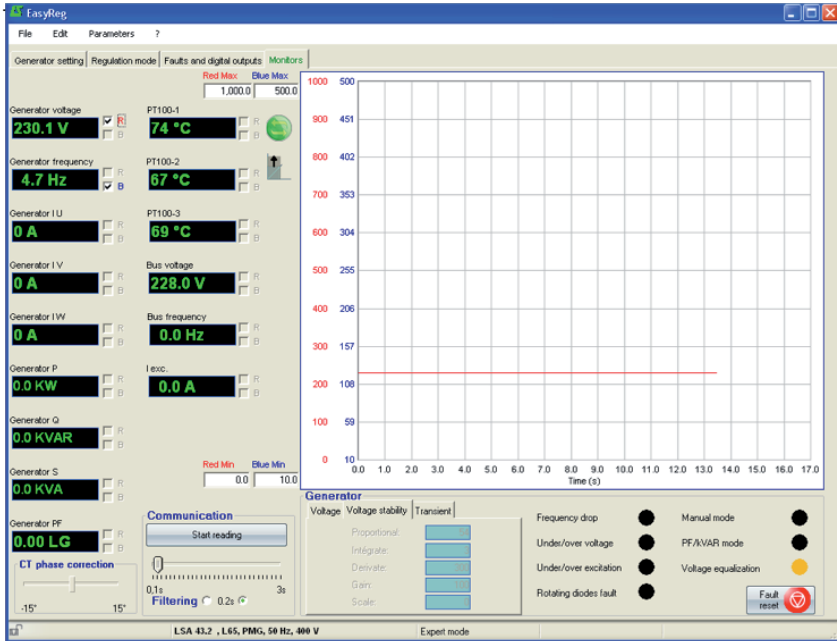
10. The voltage to track is displayed and can be adjusted thanks to the buttons  .
The setting of Underspeed is also directly accessible.
The approach is the same for the other regulation modes (PF, kVAR et lex)

D510 C

Automatic Voltage Regulators (AVRs)


Transient test


It is possible to configure a transient test in order to evaluate the regulation performances.



[Expert mode] monitors

The graph is memorized using up to 150 000 sliding points.

It is possible to move the curve by clicking on the button  and by flying over the graph

[Expert mode] An auto-scale can be obtained by clicking on the button .

[Expert mode] Fault reset

It is possible to clear fault display by clicking on the button .

[Expert mode] PID

The digital potentiometer is replaced by the PID numerical values in READ/WRITE mode.

D510 C

Automatic Voltage Regulators (AVRs)

Voltage	Voltage stability	Transient
Proportional:	<input type="text" value="54"/>	
Intégrate:	<input type="text" value="3"/>	
Derivate:	<input type="text" value="300"/>	
Gain:	<input type="text" value="100"/>	
Scale:	<input type="text" value="0"/>	

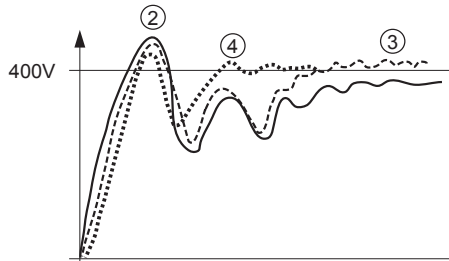


Warning: A wrong setting of the PID can damage the alternator.

PID setting methodology:

Please use Transient Test:

- ① Initial conditions:
 - Proportionnal = 10
 - Integral = 1
 - Derivative = 1
 - Gain = 10
 - Scale = 1
- ② Adjust the proportional part to obtain a response as given in the figure below.
- ③ Adjust the integral part to have the output voltage in steady states equal to desired voltage (reference voltage).
- ④ Adjust the derivative part to obtain response without oscillations.
- ⑤ Adjust the gain if necessary.
- ⑥ Change the scale value if the setting is unsuccessful and go back to step ②.



D510 C

Automatic Voltage Regulators (AVRs)

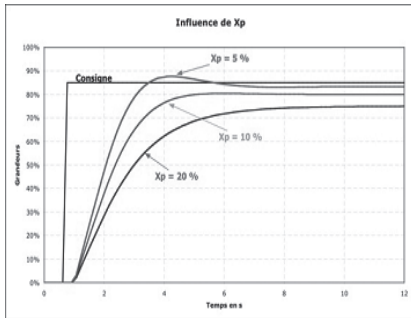
PID controller

The PID controller is an important system for the AVR. It is used to adjust the static gain with the proportional part, stability with the derivative action and speed thanks to the integral action.

- Proportional action

This action affects the speed.

The smaller the proportional band, the lower the static error and the shorter the response time.



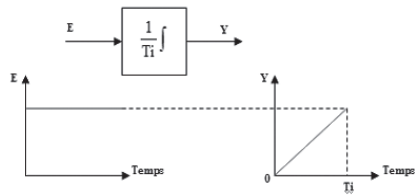
If X_p (proportional band) is small, there may be an overrun but if X_p is too large, the static error is greater.

- Integral action

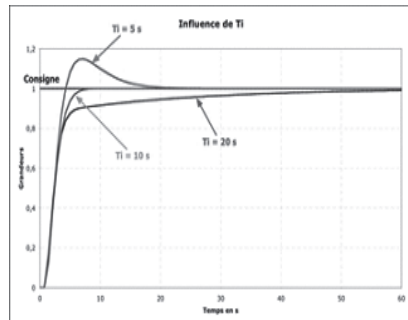
This action changes over time and is used to reduce the static error.

It is filled in by the «Integral in relation to the time» mathematical operator.

In an AVR, the integral action is defined using one of two parameters: T_i integral time or K_i integral gain.



The smaller T_i is, the more quickly the value of output Y increases. The time T_i is the time it takes command Y to increase with the value of input E .

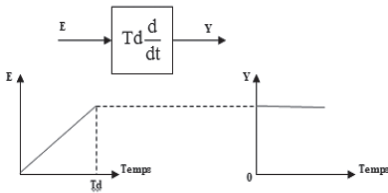


If T_i is too short, there is a strong possibility that the reference will be exceeded but if T_i is too long, the measurement takes longer to reach the reference.

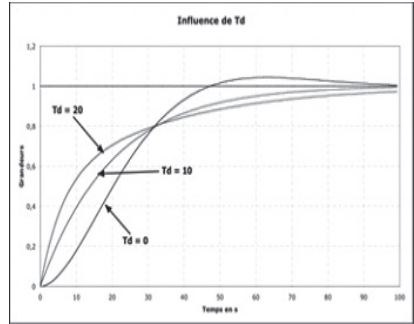
D510 C Automatic Voltage Regulators (AVRs)

- Derivative action

This action amplifies abrupt variations in the reference. It has the opposite action to the integral action. This function is filled in by the «Derivative in relation to the time» mathematical operator. In an AVR, the derivative action is defined using the derivative time T_d .



The larger T_i is, the greater the value of the Y output. The time T_d is the time it takes input E to increase by the value of output Y.



Si T_d est trop long, une erreur statique apparaît mais si T_d est très court, la réponse est plus longue et un dépassement de la consigne se forme.

The table below summarises the effects which may be influenced by the PID actions.

PID controller	Effect
Proportional action	Speed
Integral action	Accuracy
Derivative action	Stability

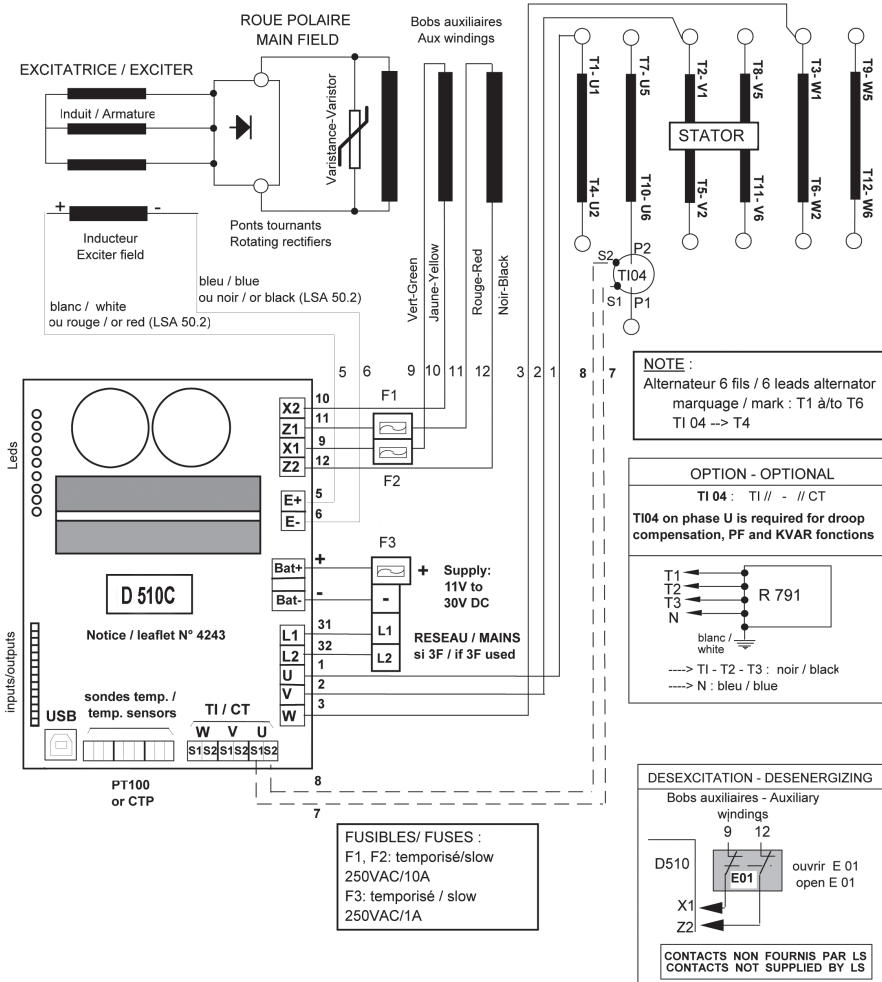
D510 C

Automatic Voltage Regulators (AVRs)

4 - CONNECTION DIAGRAMS

Régulateur Numérique D510 / digital AVR D510

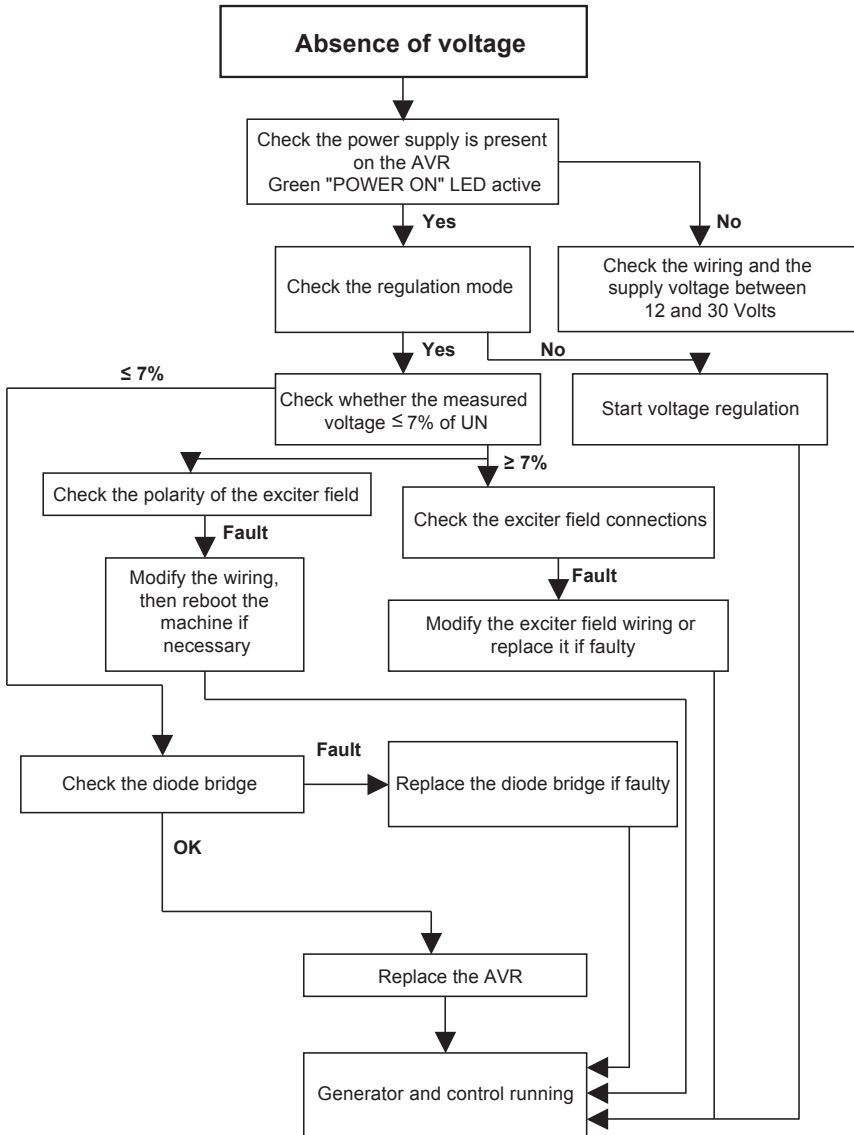
Bornier avec porte-fusibles / terminal block with fuses



D510 C

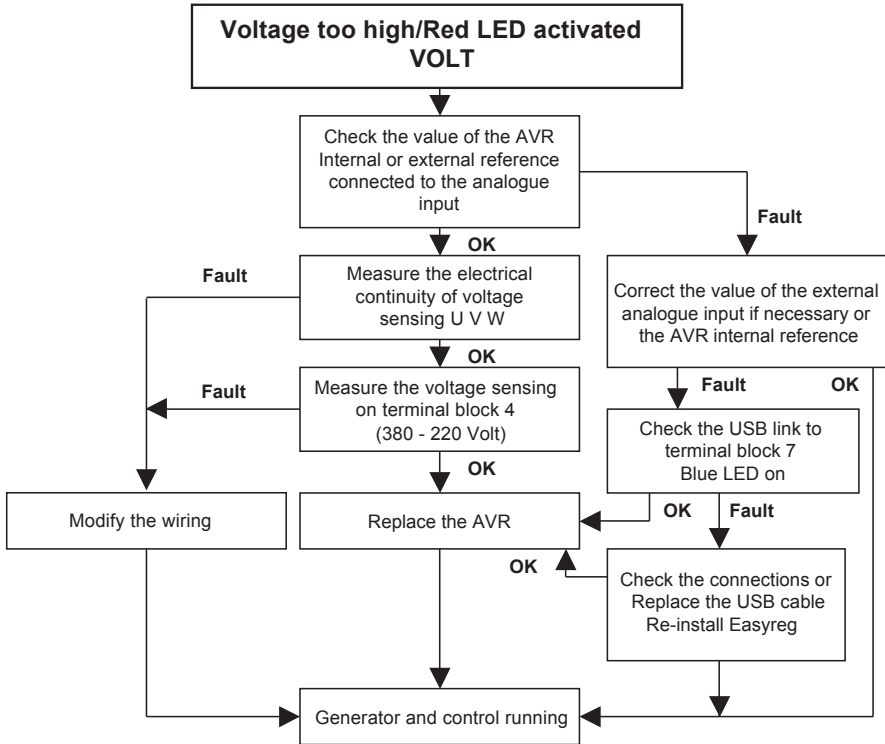
Automatic Voltage Regulators (AVRs)

5 - FAULT FLOW CHARTS



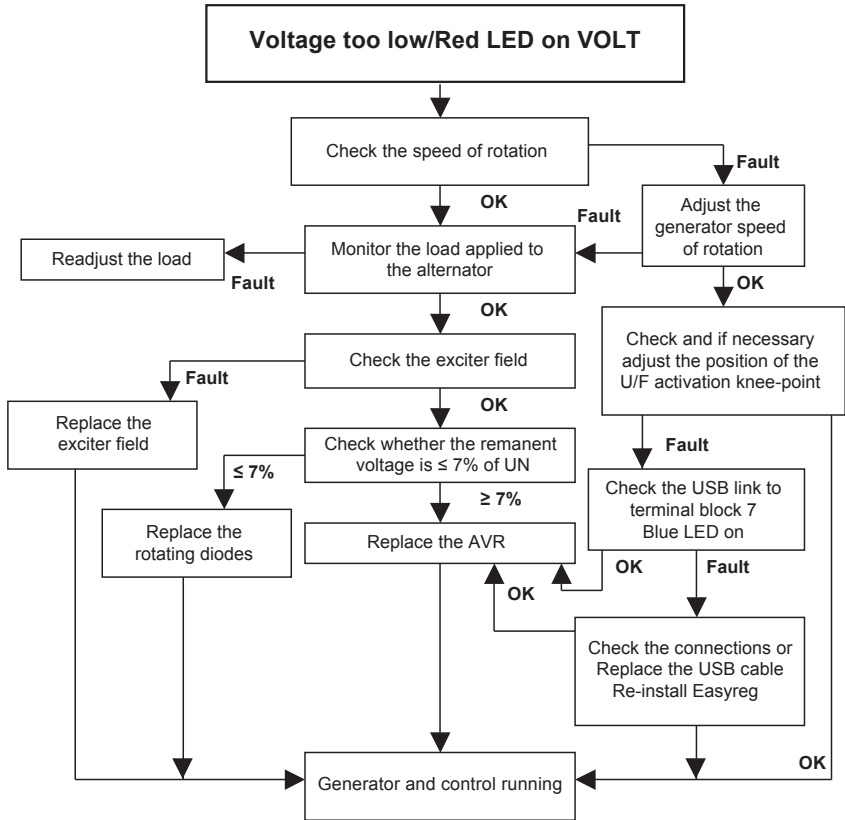
D510 C

Automatic Voltage Regulators (AVRs)



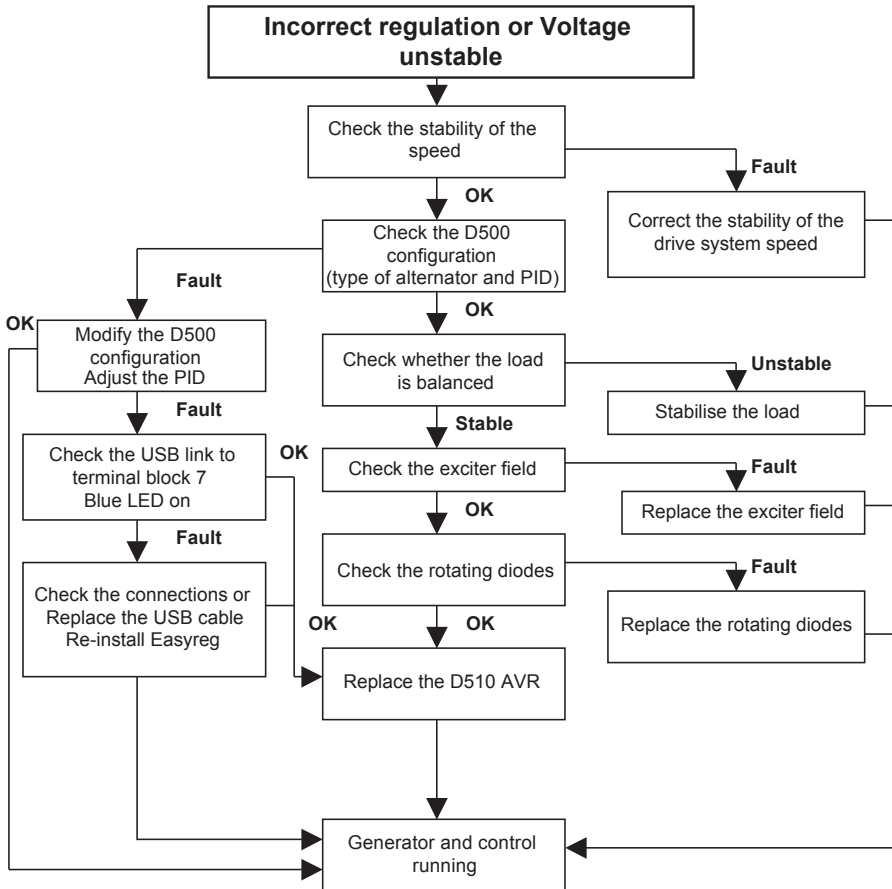
D510 C

Automatic Voltage Regulators (AVRs)



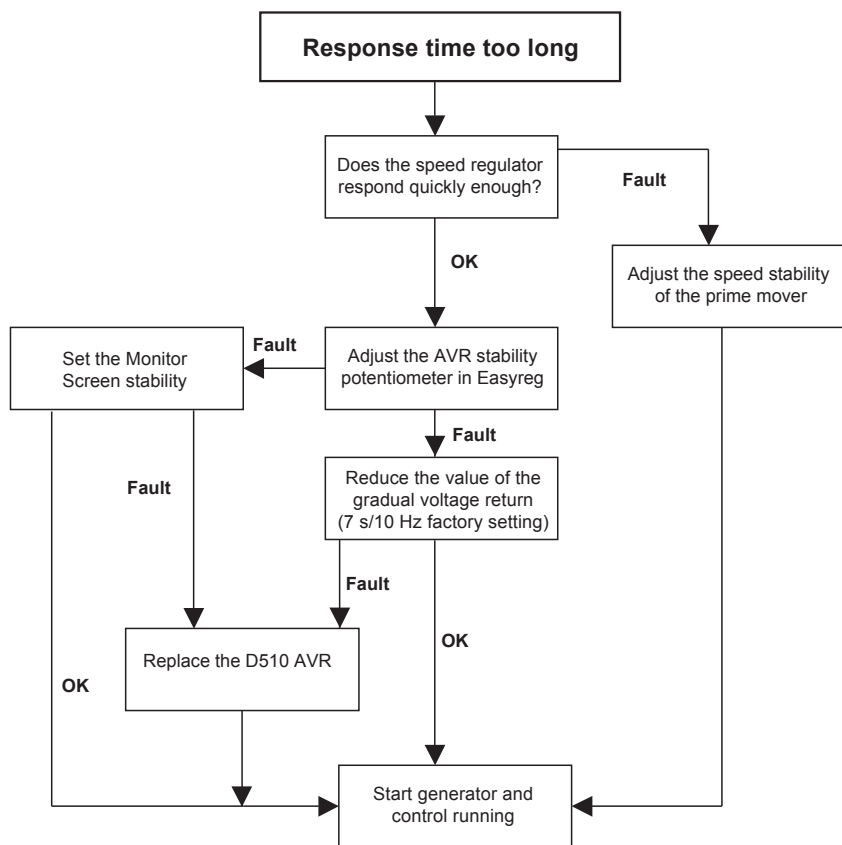
D510 C

Automatic Voltage Regulators (AVRs)



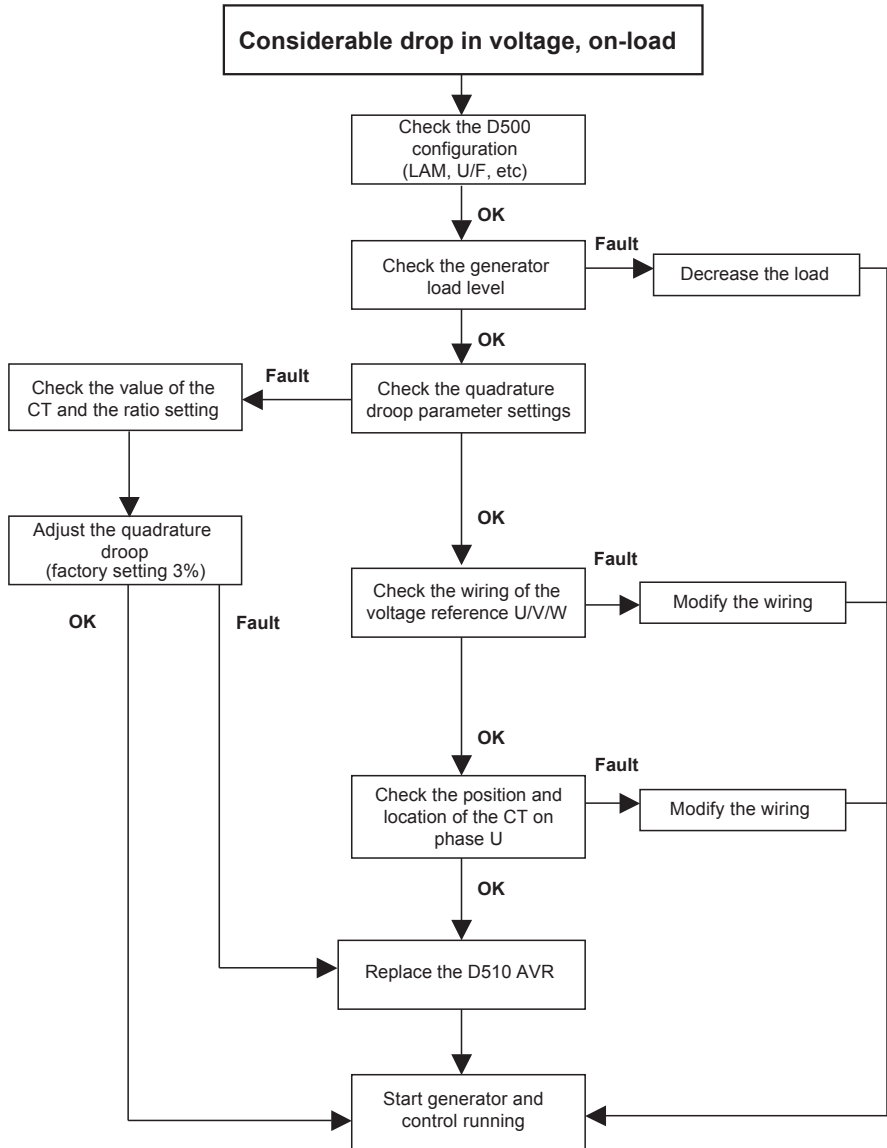
D510 C

Automatic Voltage Regulators (AVRs)



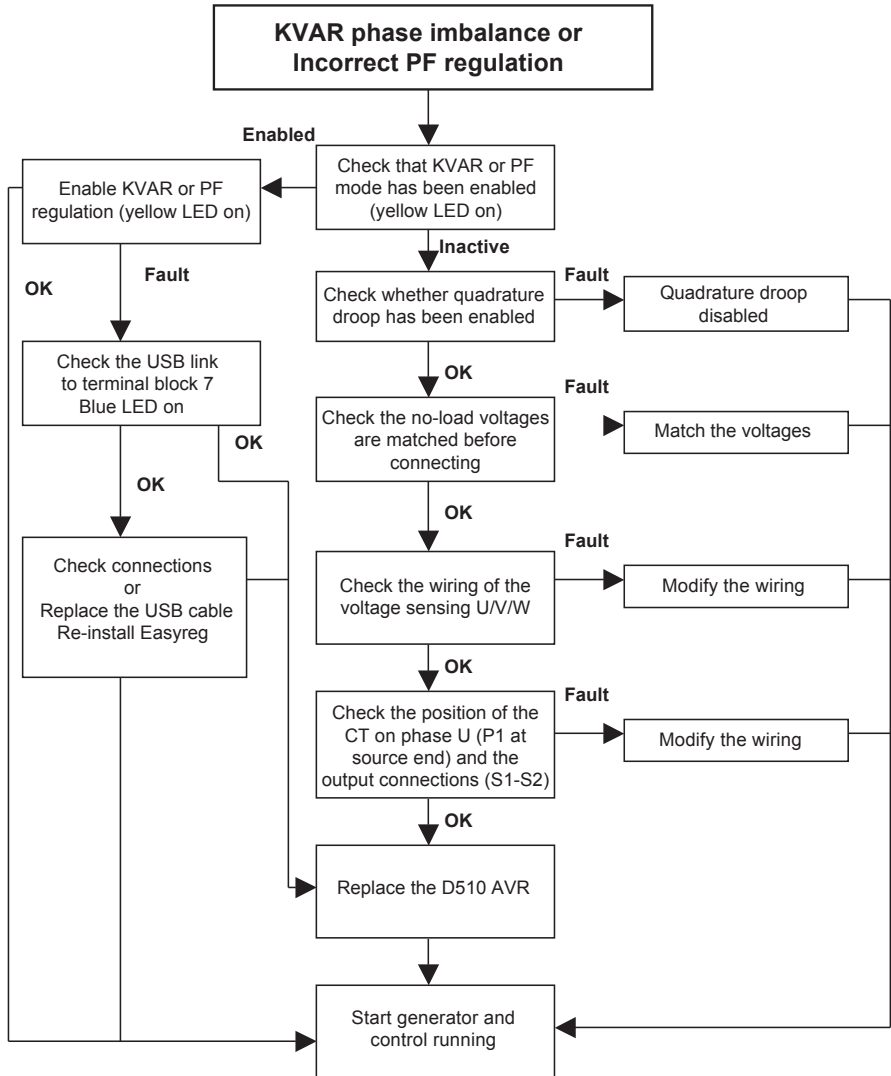
D510 C

Automatic Voltage Regulators (AVRs)



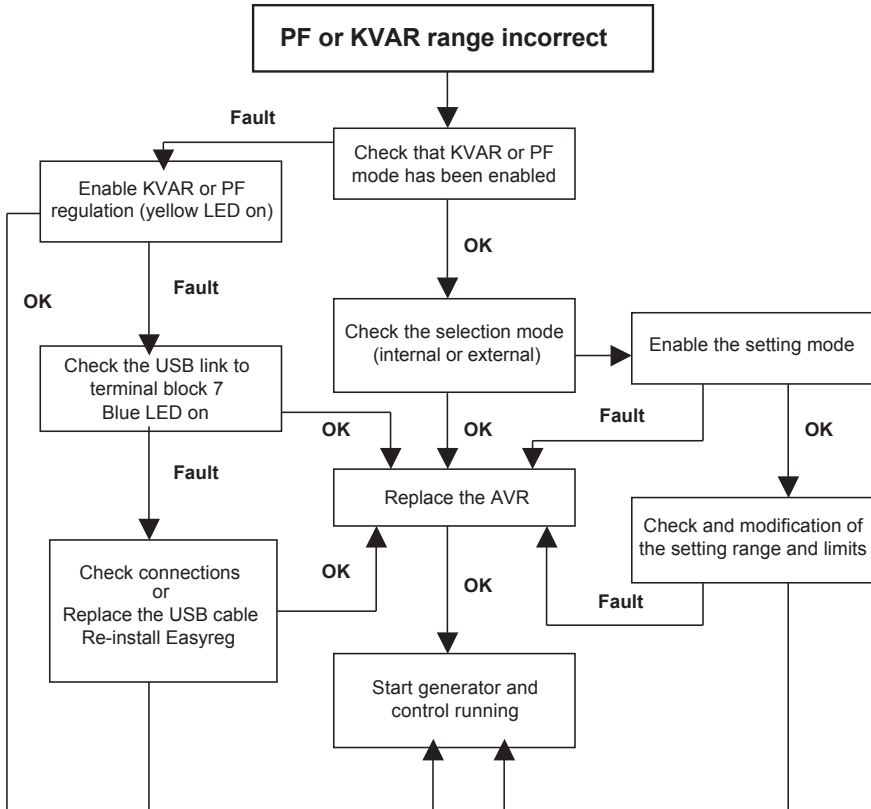
D510 C

Automatic Voltage Regulators (AVRs)



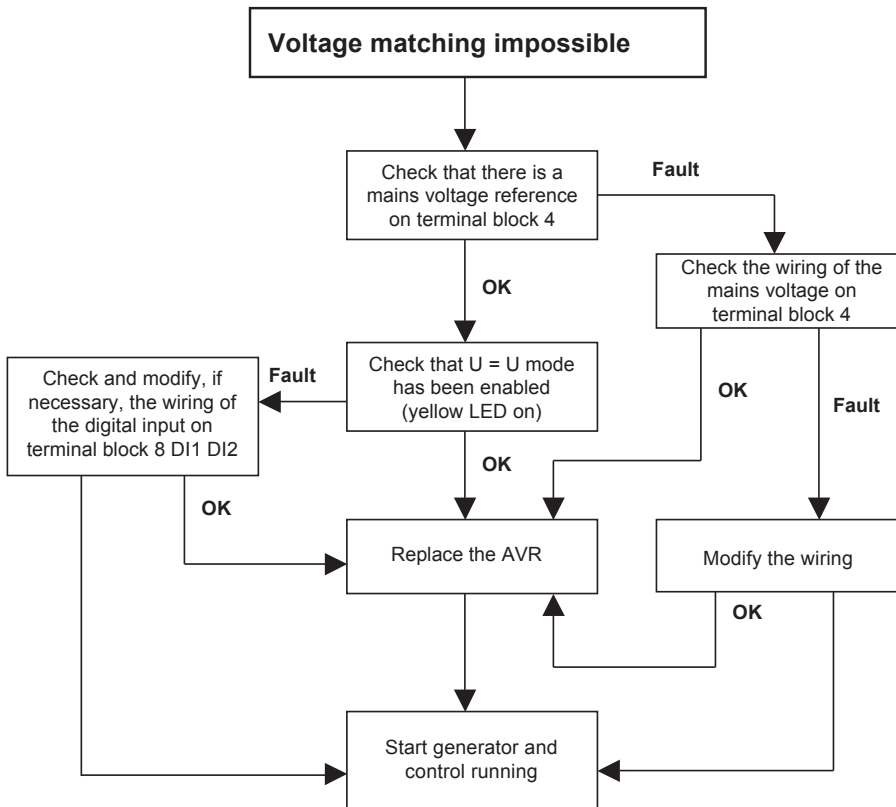
D510 C

Automatic Voltage Regulators (AVRs)



D510 C

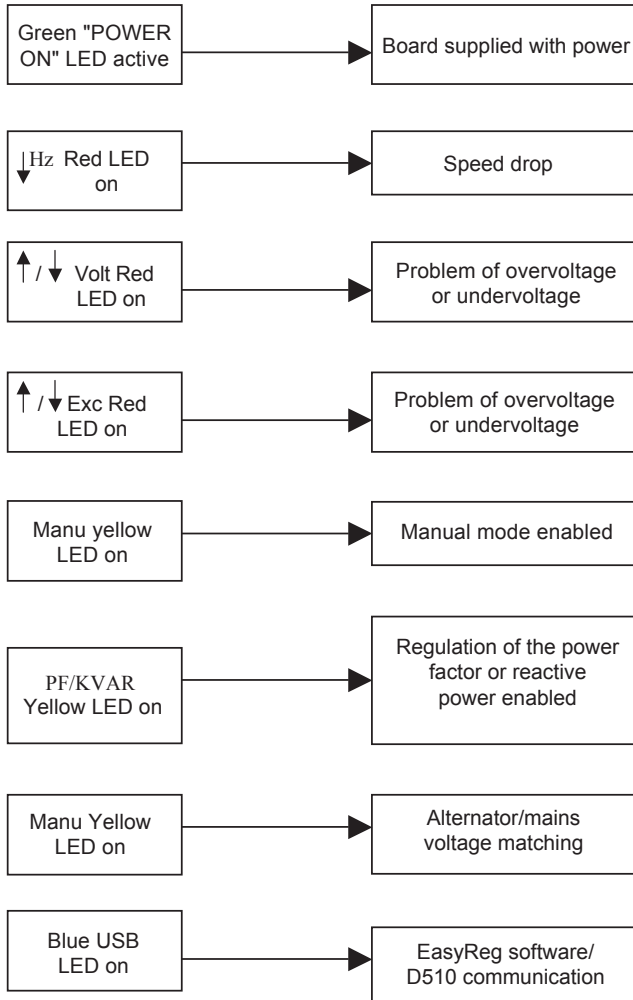
Automatic Voltage Regulators (AVRs)



D510 C

Automatic Voltage Regulators (AVRs)

LED status





MOTEURS LEROY-SOMER 16015 ANGOULÊME CEDEX - FRANCE

338 567 258 RCS ANGOULÊME
S.A. au capital de 62 779 000 E

CALL US TODAY
1-888-POWER-58

REQUEST A QUOTE
parts@genpowerusa.com

SHOP ONLINE
www.genpowerusa.com