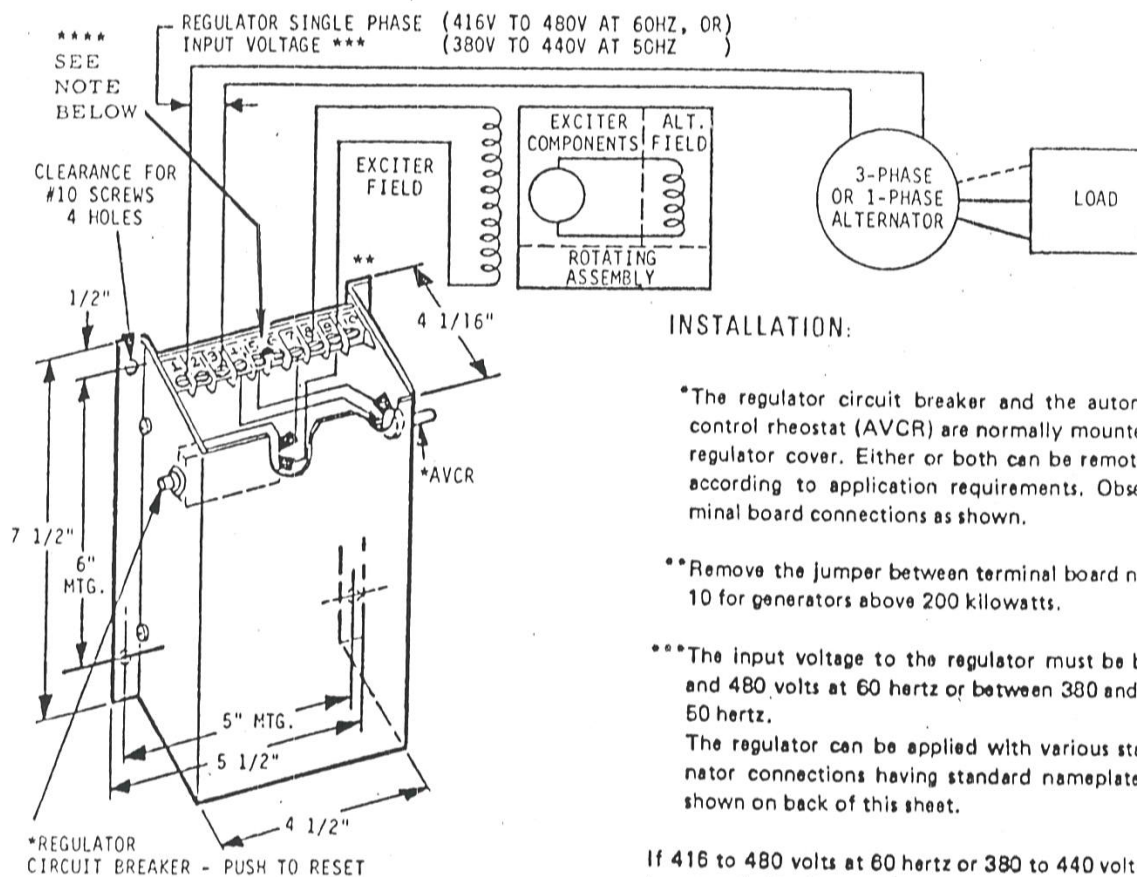


E S

INSTRUCTIONS

E S

INSTALLATION & OPERATION— VR184 SERIES VOLTAGE REGULATOR



**** NOTE: The jumper between TB5 & TB6 must be removed if either a parallel kit or a static underspeed switch, or both, are used.

OPERATION:

For a new installation, turn the AVCR fully counter-clockwise so that the line voltage will be at a minimum after the engine is started.

Start the driving engine and adjust to rated speed of the generator.

CAUTION: Generators operating with automatic voltage regulators should not be run at less than nameplate speed, unless equipped with underspeed protection. Reduced speed operation may damage the regulator or generator.

Adjust the generator voltage to the desired level within the nameplate rating with the AVCR.

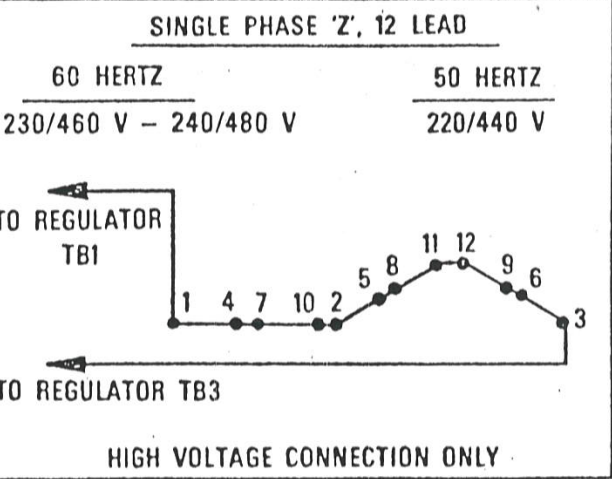
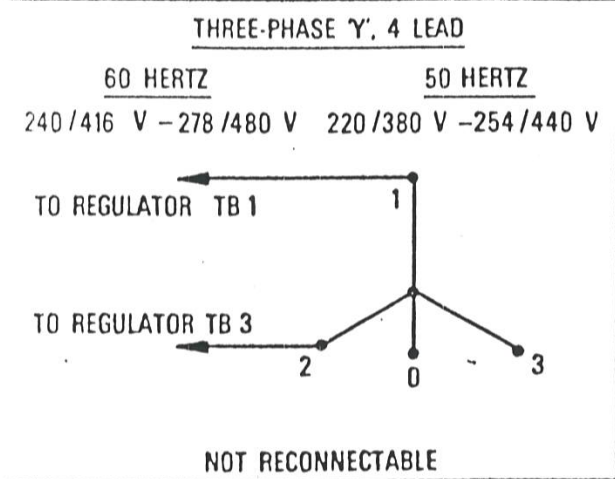
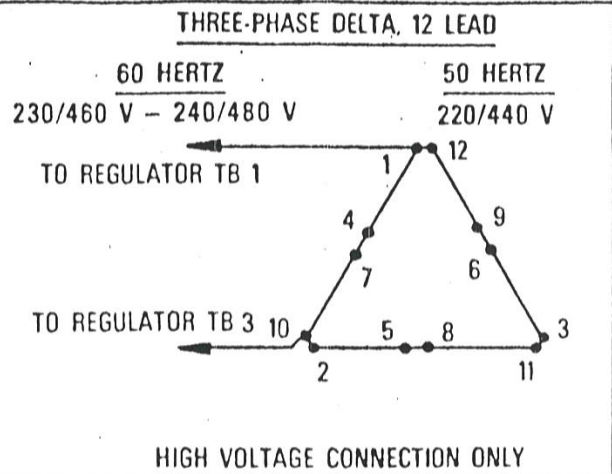
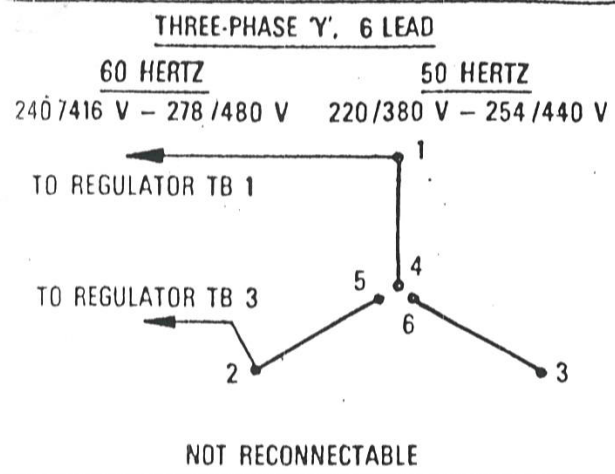
4. Close the line switch or circuit breaker.

5. Check amperes, volts, and frequency to be certain values are within nameplate rating. Also, check both voltage and current line balance on three-phase systems.

Field Flashing

CAUTION: The rectifiers in the regulator will be damaged if the generator exciter is flashed wrong. The correct polarity for field flashing is: Battery (+) on regulator terminal 8 and battery (-) on terminal 9.

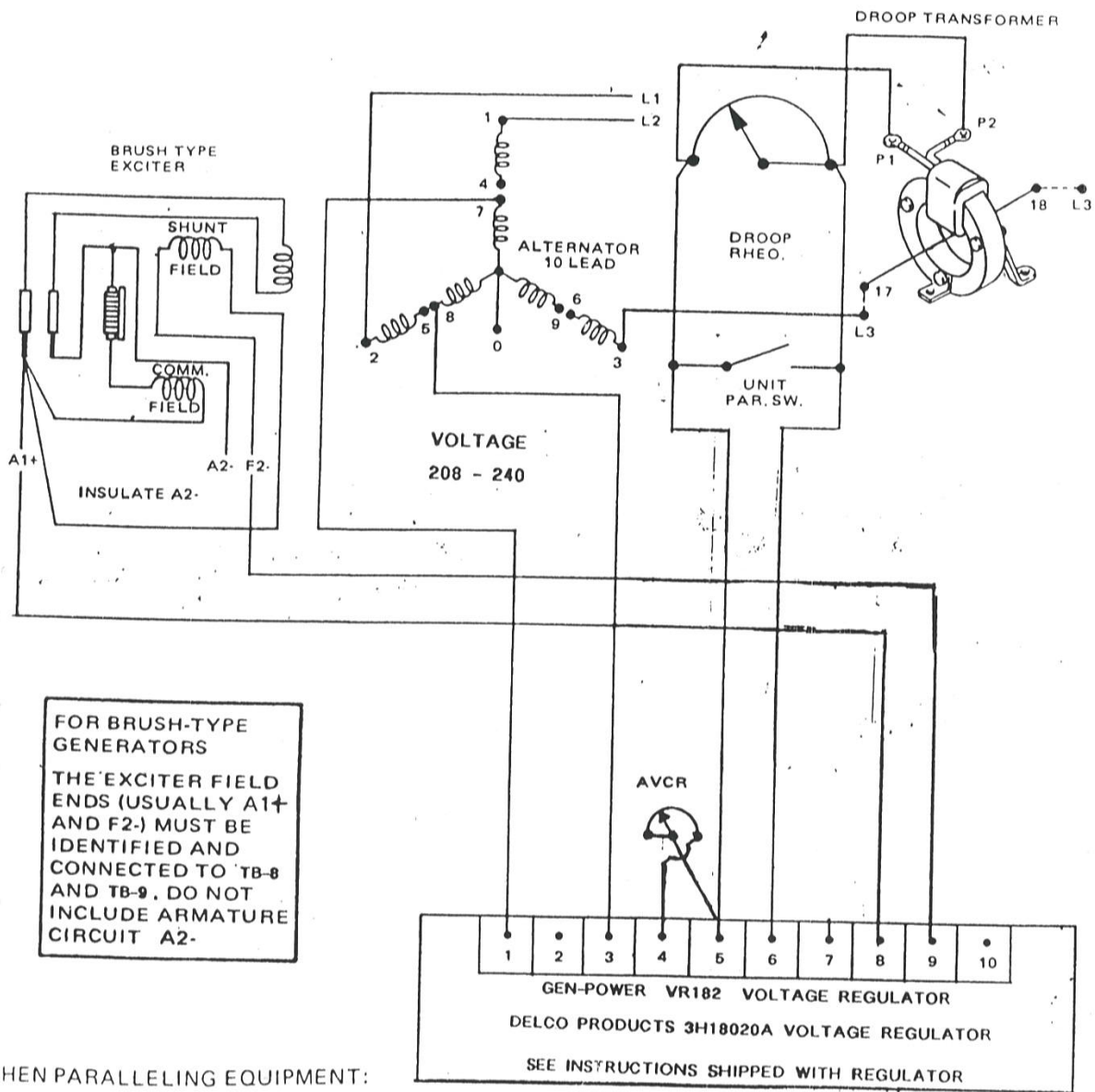
4976819 11/77



ACCESSORIES:

- 1. H39184C Paralleling Kit – for 3-phase, wye connected, 4 or 6 lead alternator less than 550 kilowatts. Other paralleling kits available for different alternator connections – contact the factory.
- 2. H443000 Static Underspeed Switch – To protect the generator-regulator system when the frequency is more than 10% below rated frequency.
- 3. H38000 Series C Triple Action Boost (TAB) – The TAB system improves generator-regulator performance in three ways:
 - a. Strong short-circuit drive.
 - b. Improved motor starting.
 - c. Increased operating current range of regulator.

When ordering accessories, include the generator model number.



WHEN PARALLELING EQUIPMENT:
IS USED, REMOVE SHORT TB-5 TB-6
IS NOT USED, SHORT TB-5 TO TB-6

TYPICAL DIAGRAM FOR A DELCO PRODUCTS 10-LEAD, BRUSH-TYPE GENERATOR WITH PARALLELING EQUIPMENT