

A  
B  
C  
D  
E  
F  
G  
H

FOR INDIVIDUAL GEN SET MODEL TYPES SEE BROADCAST LITERATURE

ENGINE TYPE: 6068HF485

ALTERNATOR: UCI274H

USEABLE FUEL CAPACITY: 380L

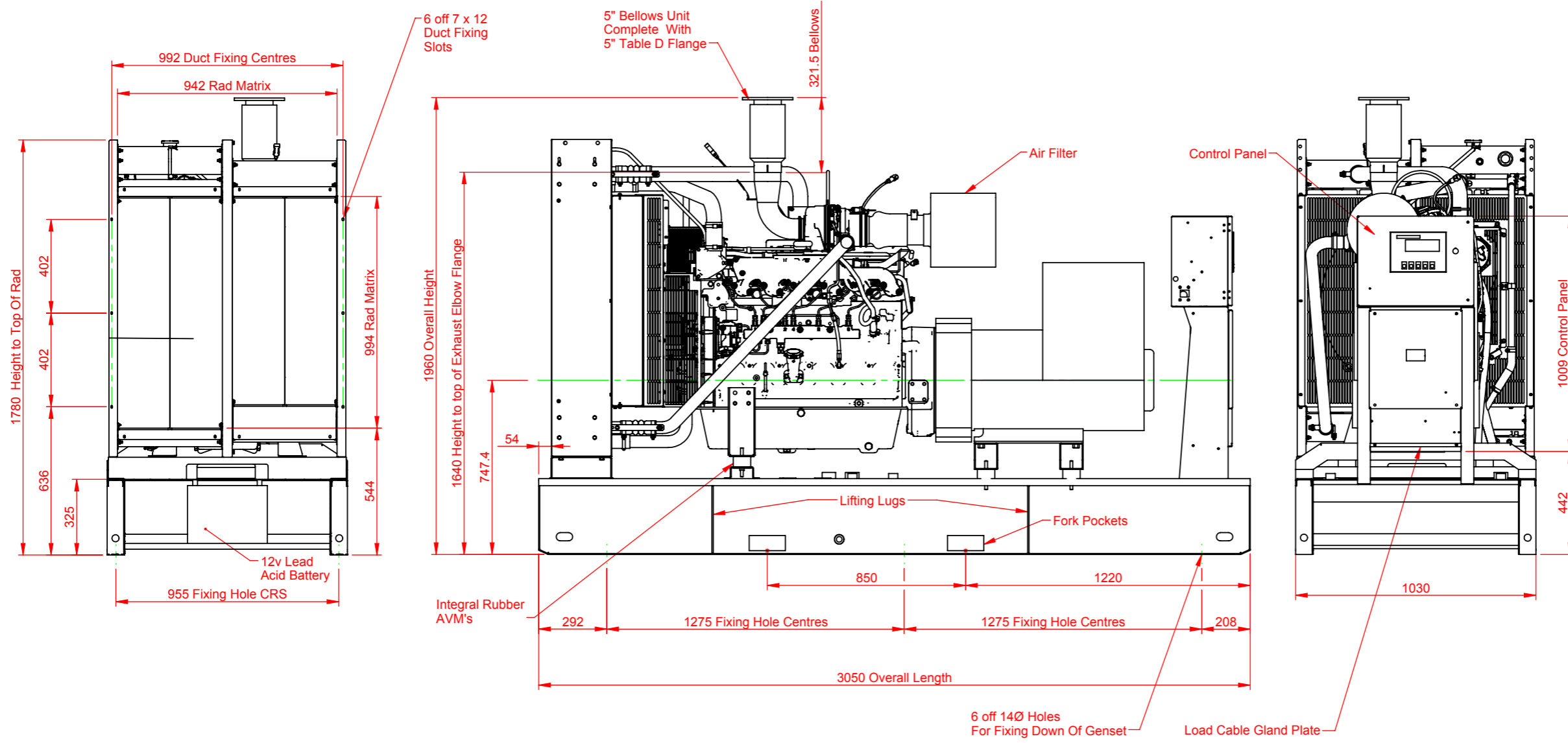
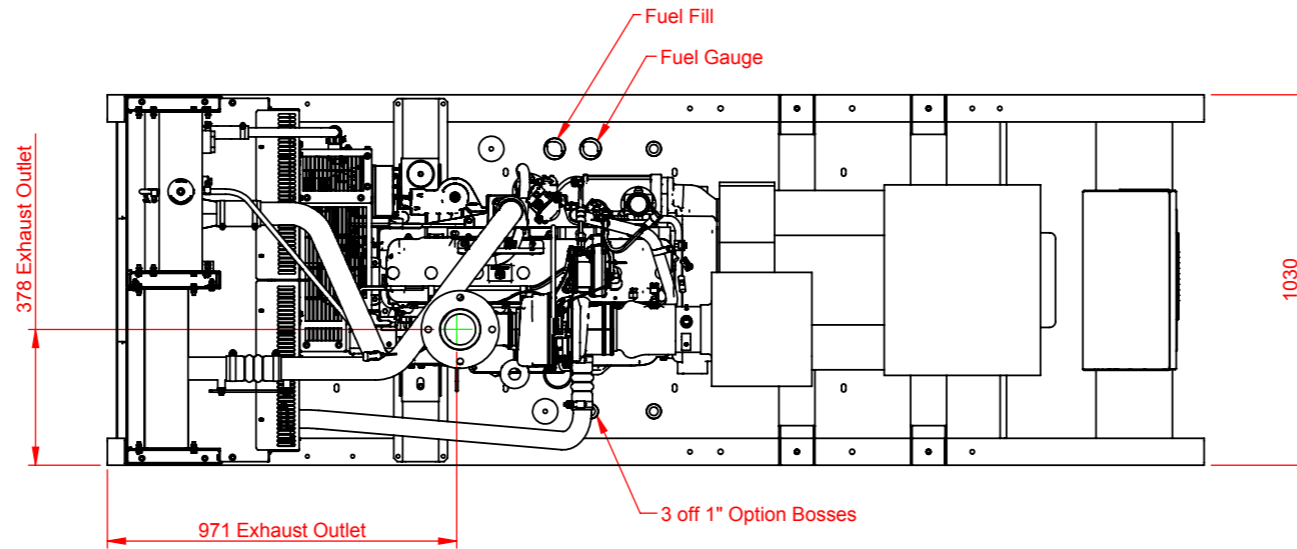
SHIPPING WEIGHT (WITH OIL): 2568Kg

WET WEIGHT 50/50 GLYCOL & FUEL: 2995Kg

OIL CAPACITY: ?L

COOLING CAPACITY: 32L

GENERATOR IS TO BE PLACED ON A FLAT FLOOR OR CONCRETE BASE



B	Redrawn with New Logo	SJB	4/6/10
REV	DETAILS	APP'D	DATE

NOTES - MECHANICAL  
TOLERANCES:  
GENERAL TOLERANCES: +/- 5mm  
FABRICATION: +/- 3mm  
HOLE CENTRES: +/- 1mm  
OTHER TOLERANCES AS OTHERWISE STATED WHERE REQUIRED  
GEOMETRICAL AND OTHER TOLERANCES AS STATED.  
THIRD ANGLE PROJECTION

DESCRIPTION  
JD6068HF485 c/w UCI274H Open Frame 5  
Model Ref: BCJD 200-60T3

SHEET 1 of 1	
CREATED BY:	S BEAN
DATE:	10/09/09
MODIFIED BY:	S BEAN
DATE:	04/06/10
CHECKED BY:	P RUTTER
DATE:	04/06/10
ISSUE:	B

DRAWING No:  
**JGA094-B**

**broadcrown**  
Broadcrown Limited (Group Headquarters)  
Airfield Industrial Estate, Hixon, Stafford,  
ST18 0PF, United Kingdom.  
tel: +44 (0) 1889 272200  
www.broadcrown.com

MATERIAL:	
FINISH:	