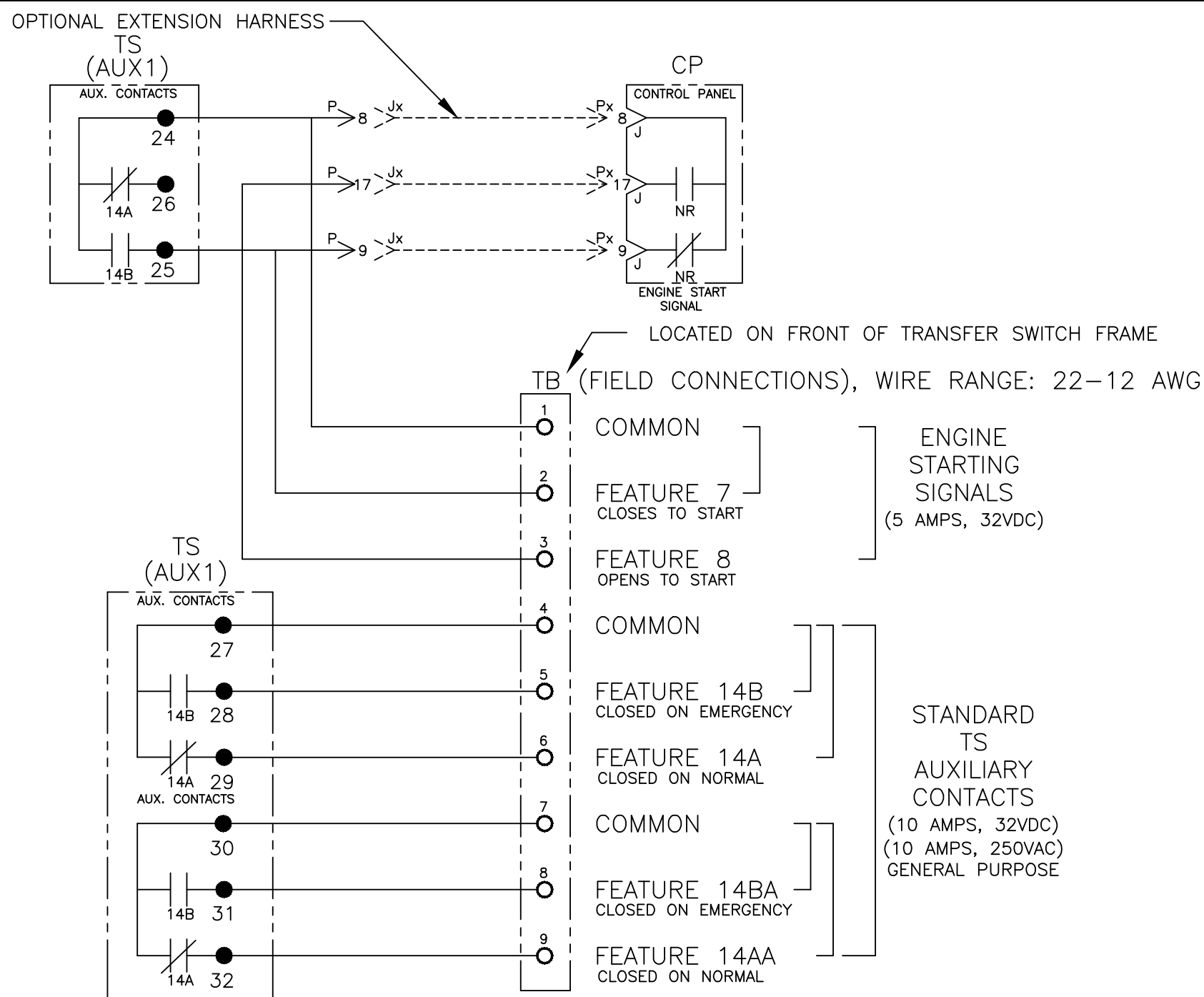
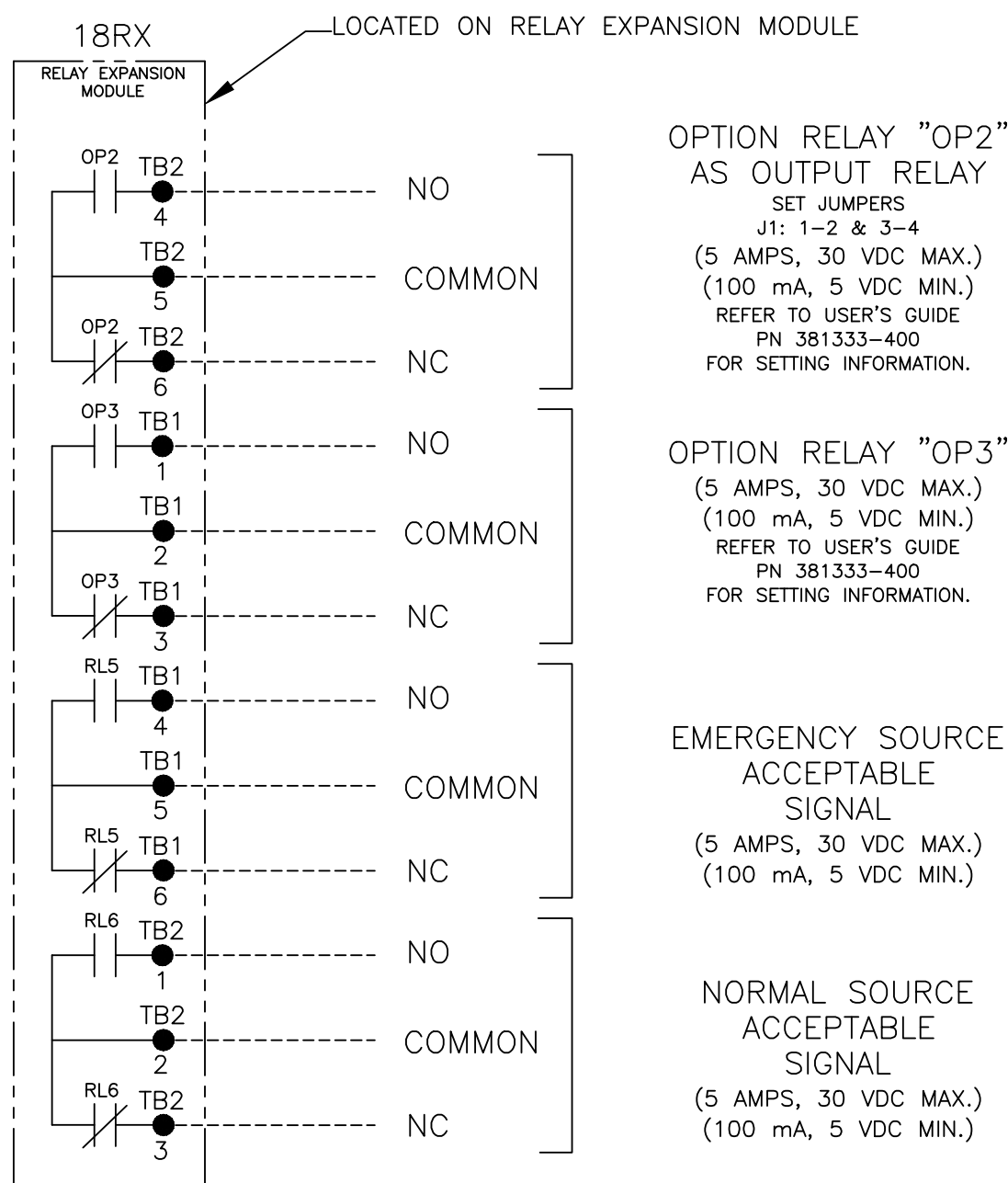


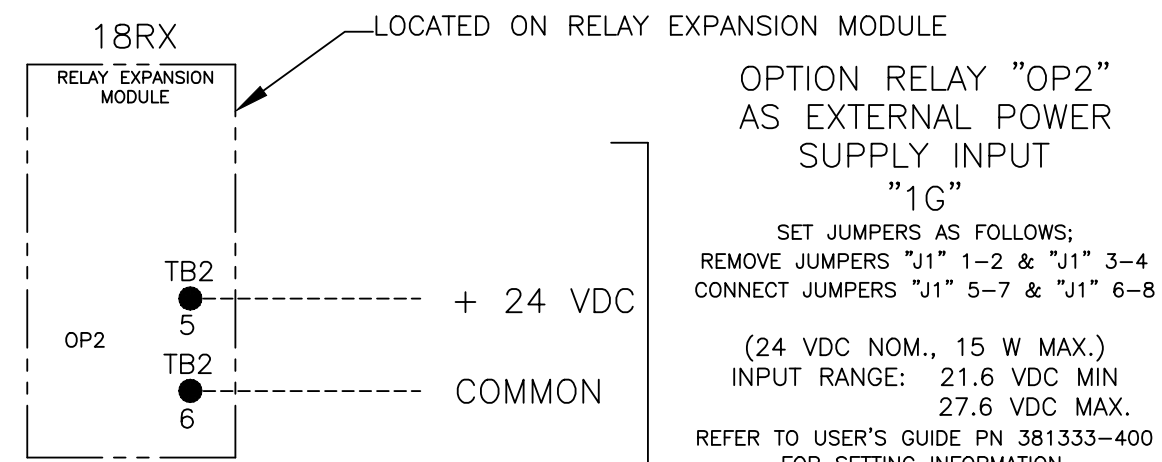
FIELD CONNECTIONS



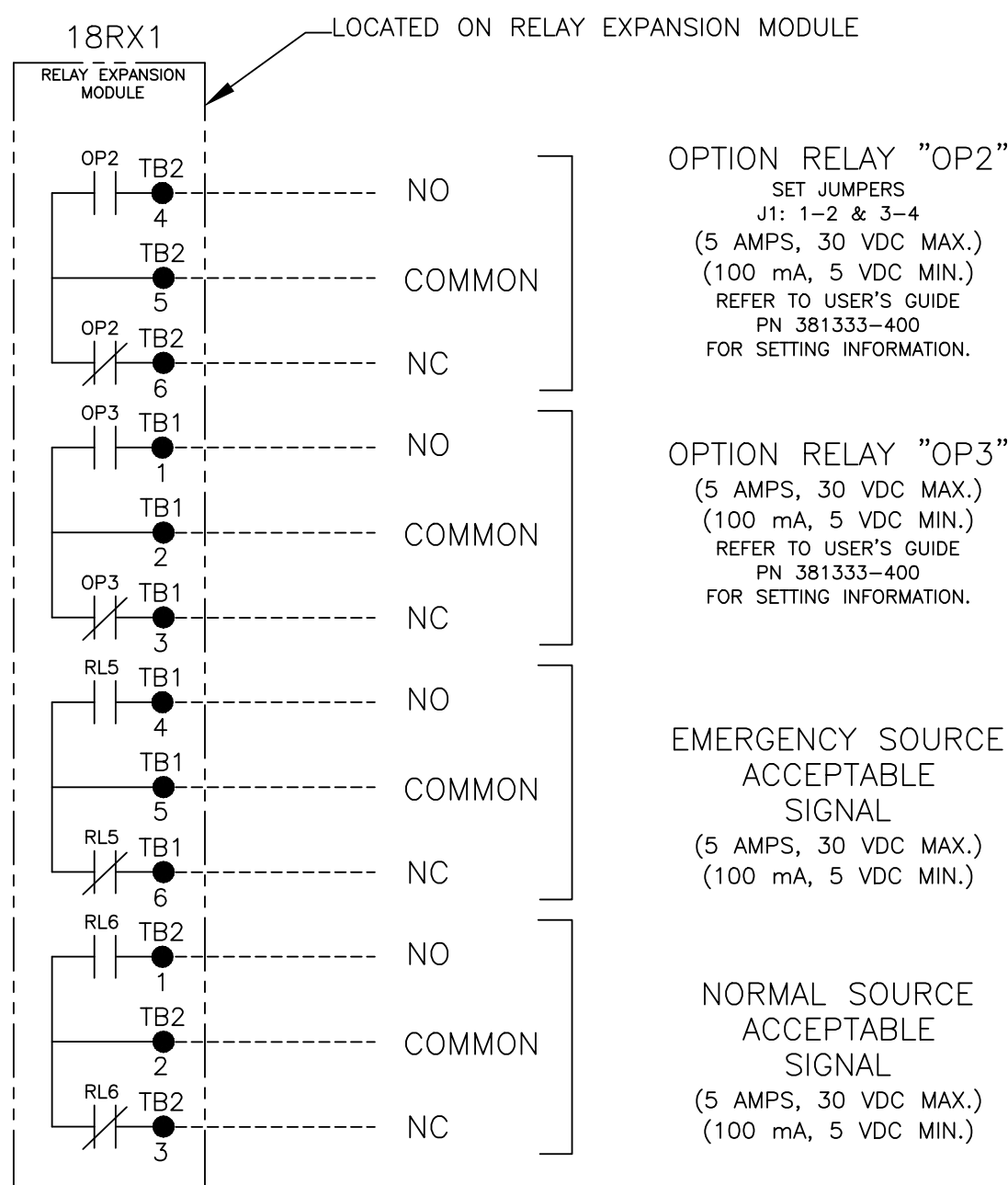
OPTIONAL ACCESSORY 18RX (RELAY EXPANSION MODULE)



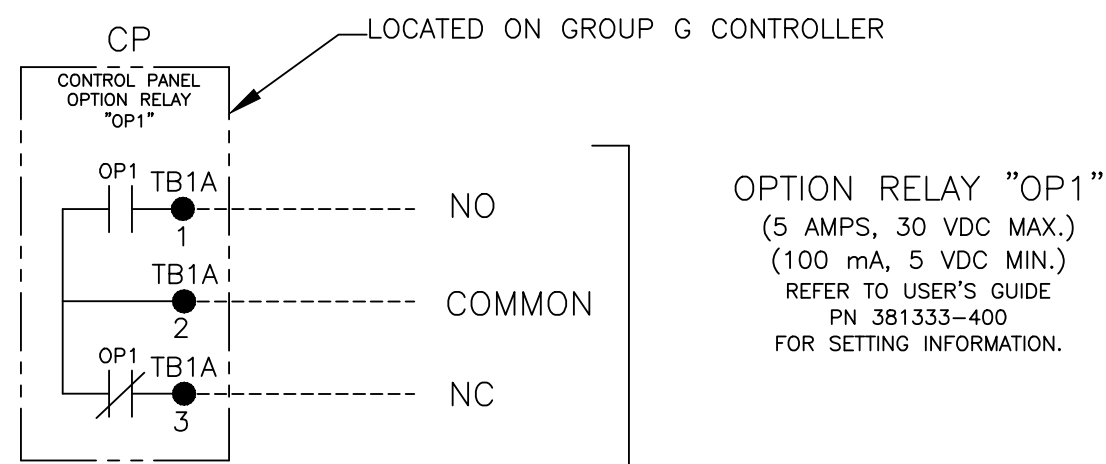
"OP2" OPTIONAL USES



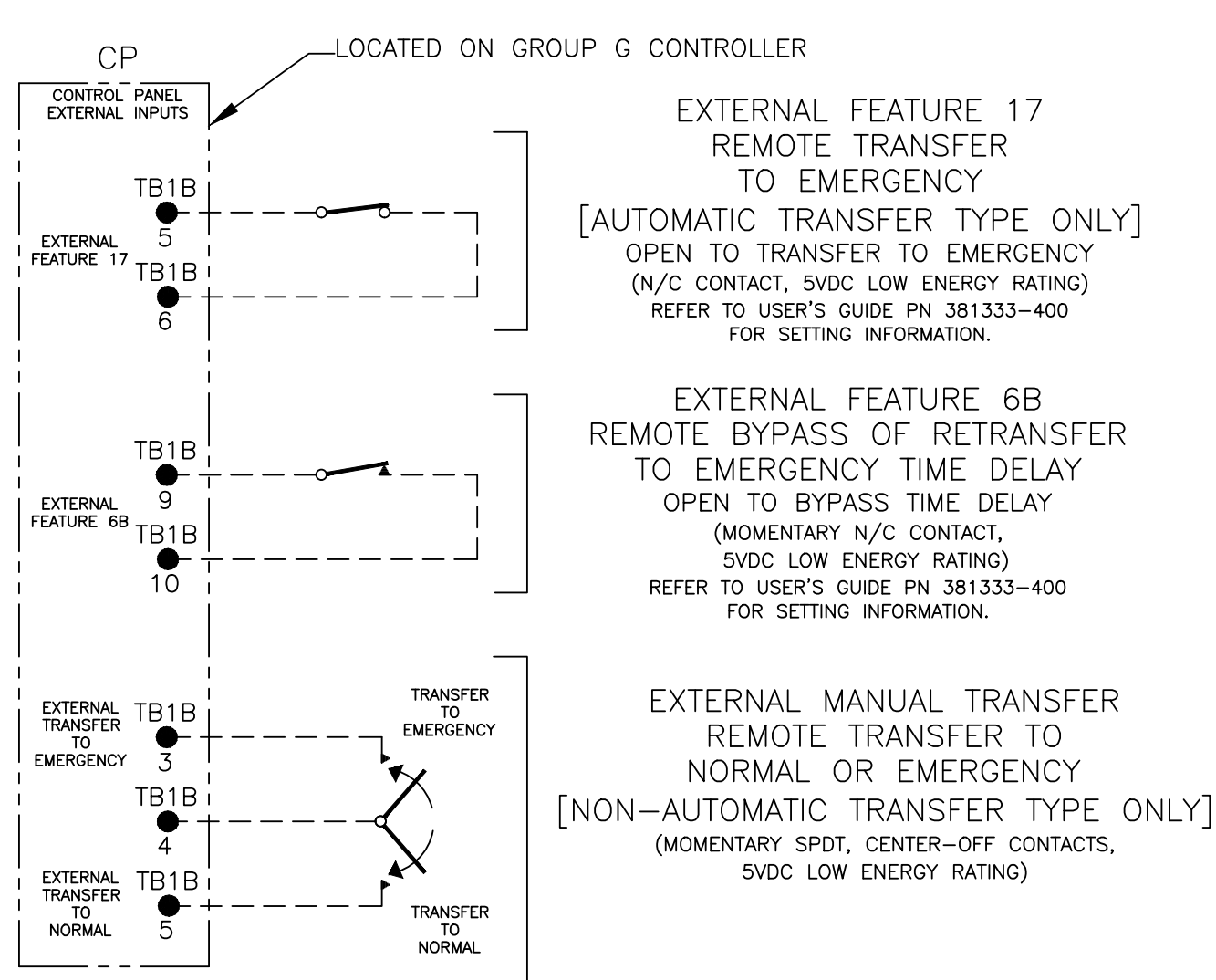
OPTIONAL ACCESSORY 18RX1 (SECOND RELAY EXPANSION MODULE)



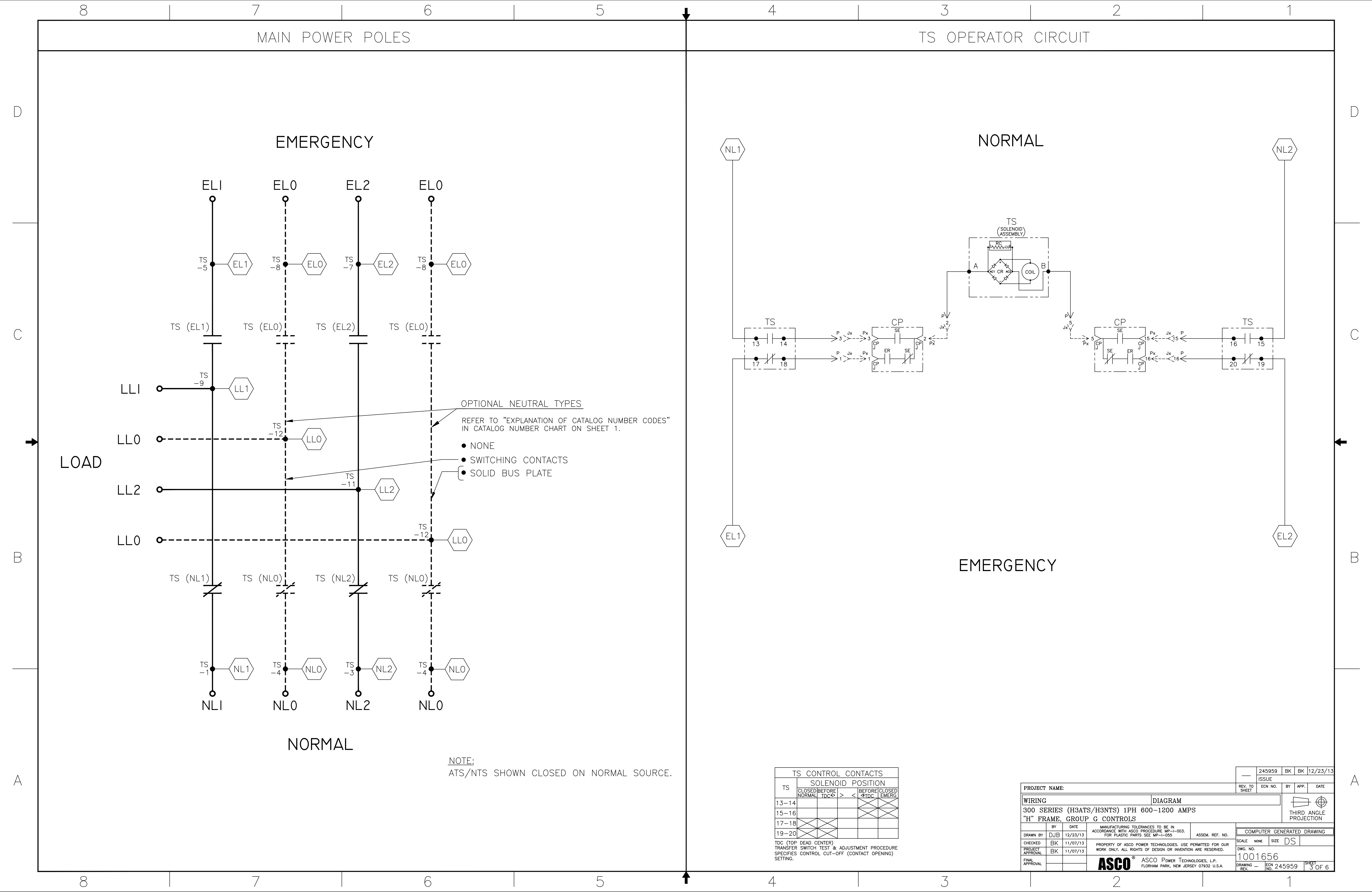
CONTROLLER OPTION RELAY "OP1" (STANDARD)

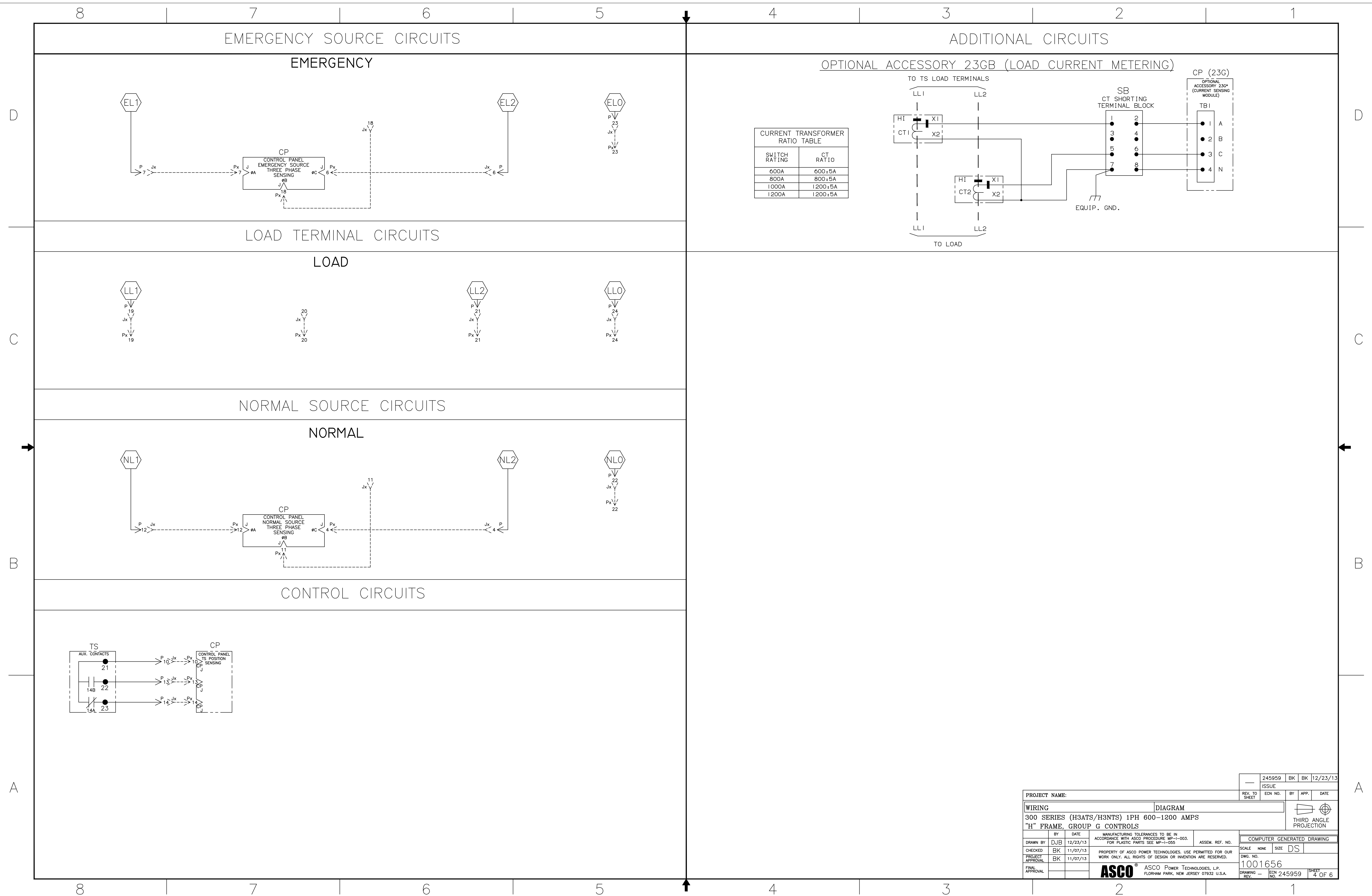


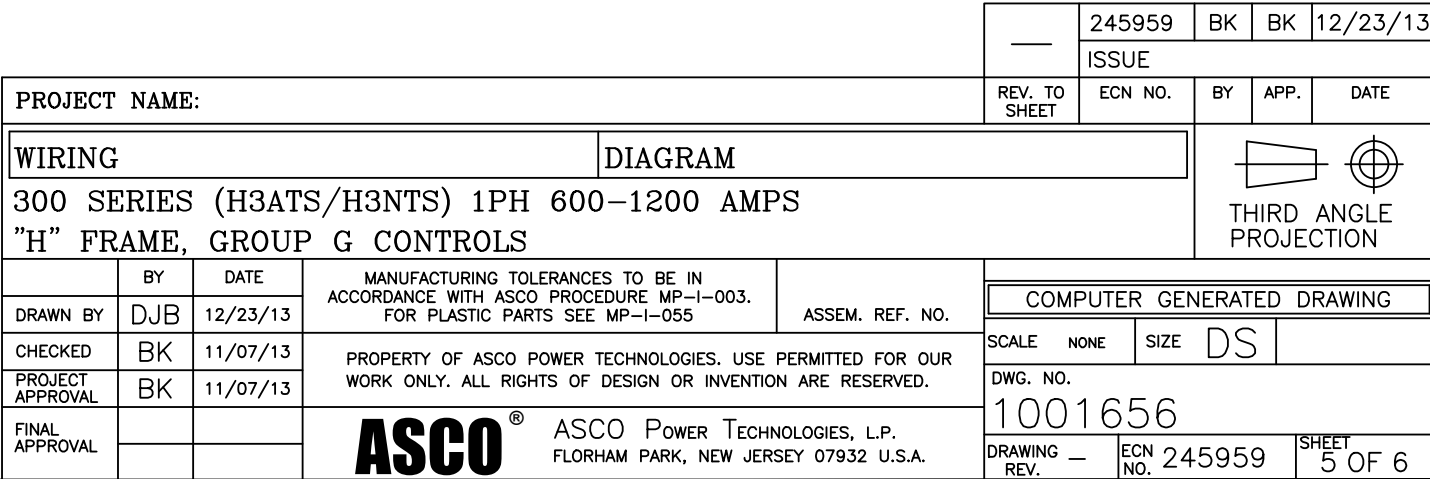
CONTROLLER REMOTE CONTROL FEATURES



PROJECT NAME:		REV. TO SHEET		245959	BK	BK	12/23/13
WIRING		DIAGRAM		ISSUE			
300 SERIES (H3ATS/H3NTS) 1PH 600-1200 AMPS		"H" FRAME, GROUP G CONTROLS		THIRD ANGLE PROJECTION			
DRAWN BY	BY	DATE	MANUFACTURING TOLERANCES TO BE IN ACCORDANCE WITH ASCO PROCEDURE MP-1-003. FOR PLASTIC PARTS SEE MP-1-055.		ASSEM. REF. NO.		COMPUTER GENERATED DRAWING
CHECKED	BK	11/07/13	PROPERTY OF ASCO POWER TECHNOLOGIES. USE PERMITTED FOR OUR WORK ONLY. ALL RIGHTS OF DESIGN OR INVENTION ARE RESERVED.		SCALE		NONE
PROJECT APPROVAL	BK	11/07/13	ASCOPower Technologies, L.P.		DWG. NO.		1001656
FINAL APPROVAL			FLORHAM PARK, NEW JERSEY 07932 U.S.A.		DRAWING REV.		245959
						2 OF 6	







DDCBA