

UCI274H  
Winding 06

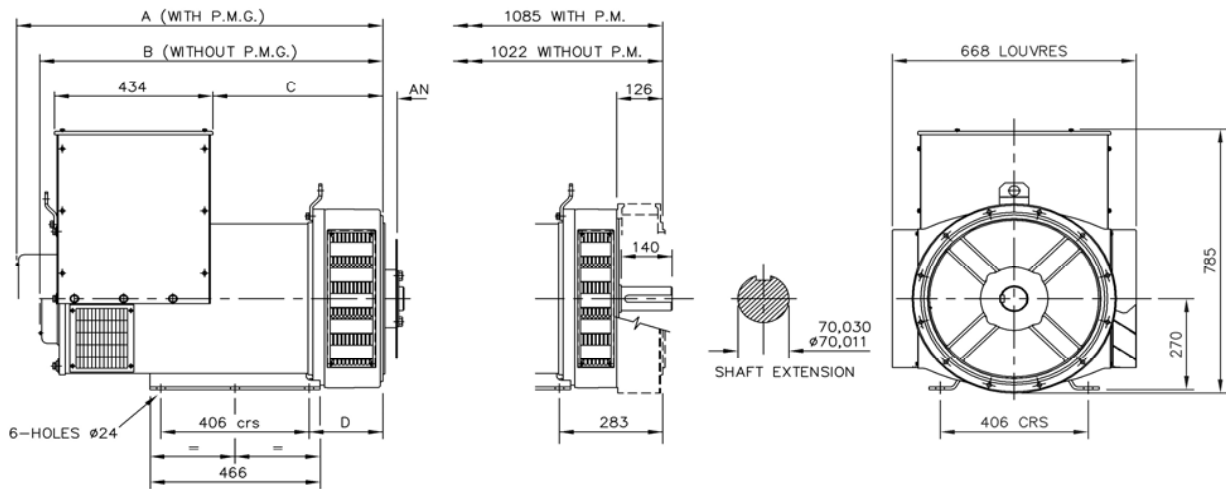
**STAMFORD**

**60Hz**

**RATINGS**

Class - Temp Rise	Cont. F - 105/40°C <b>0.8pf</b>			Cont. H - 125/40°C <b>0.8pf</b>			Cont. F - 105/40°C <b>1.0pf</b>			Cont. H - 125/40°C <b>1.0pf</b>		
	Series (V)	220	230	240	220	230	240	220	230	240	220	230
Parallel (V)	110	115	120	110	115	120	110	115	120	110	115	120
kVA	143.8	143.8	143.8	156.3	156.3	156.3	143.8	143.8	143.8	156.3	156.3	156.3
kW	115.0	115.0	115.0	125.0	125.0	125.0	143.8	143.8	143.8	156.3	156.3	156.3
Efficiency (%)	86.7	86.9	87.2	86.3	86.7	86.9	89.6	89.9	90.1	89.3	89.6	89.9
kW Input	132.6	132.3	131.9	144.8	144.2	143.8	160.5	160.0	159.6	175.0	174.4	173.9

APPROVE  
DIMENSIONS



ADAPTOR	SINGLE BEARING MACHINES ONLY					COUPLING DISCS	AN
	A	B	C	D			
SAE 1	1018,3	955,3	479,3	216,3	SAE 10	53,98	
SAE 2	1004	941	465	202	SAE 11,5	39,68	
SAE 3	1004	941	465	202	SAE 14	25,40	