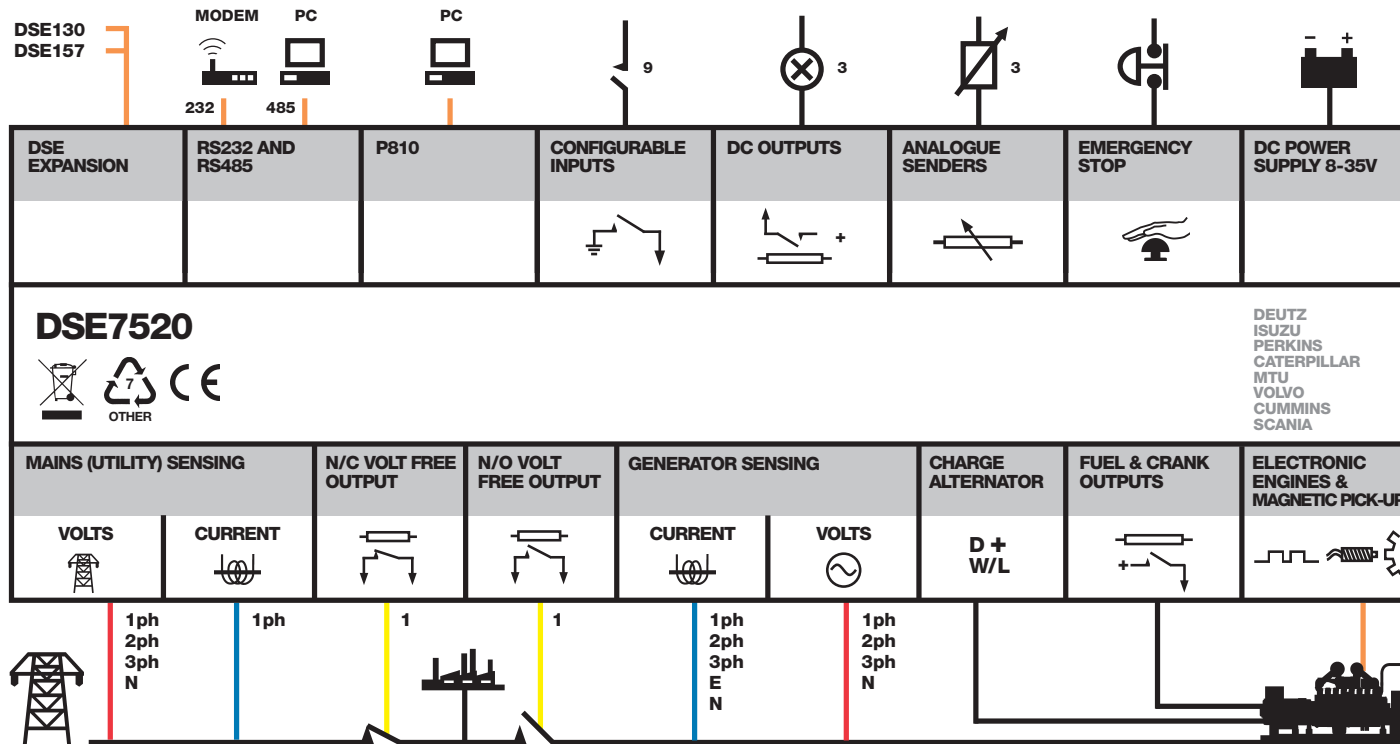


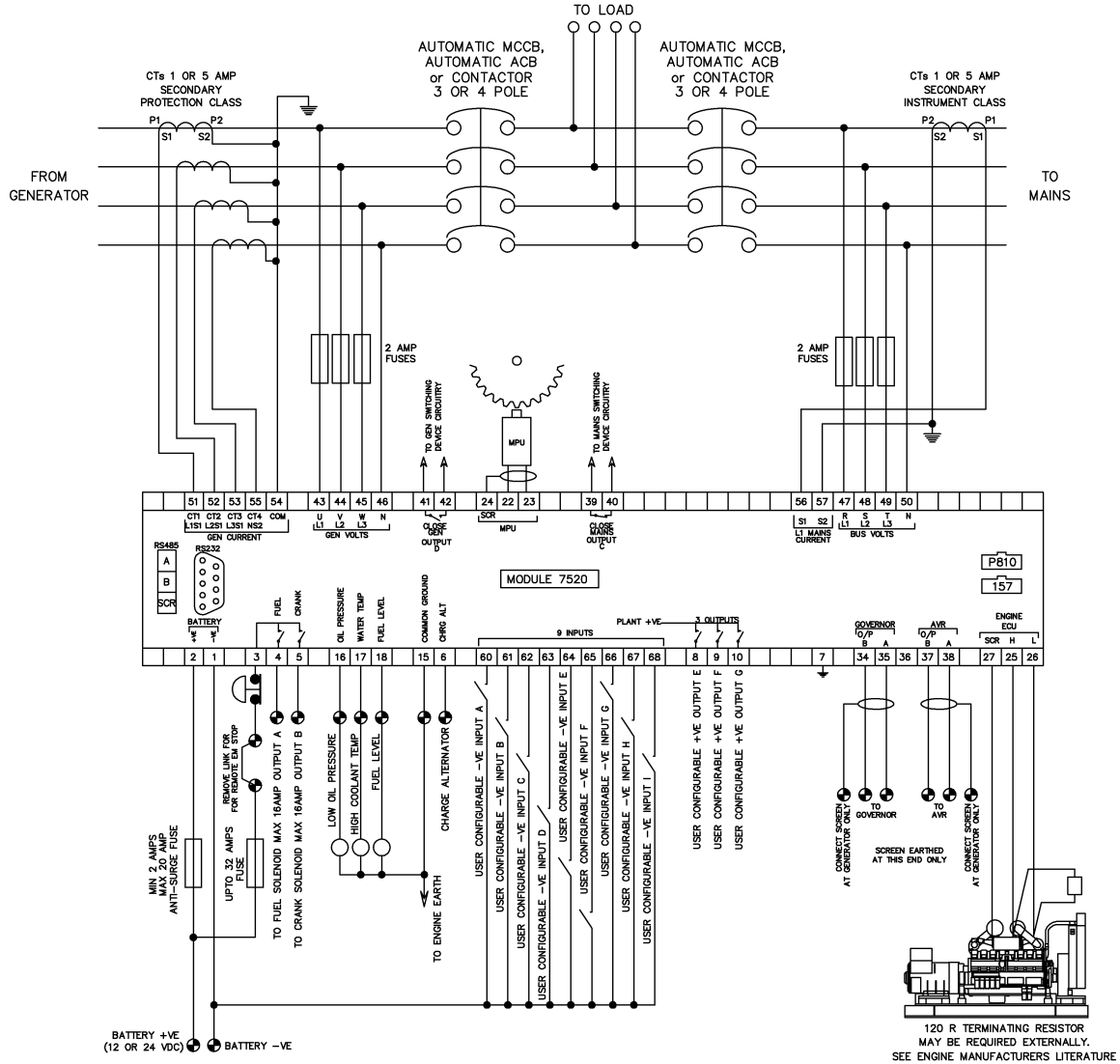
DSE7520

AUTO MAINS FAILURE & INSTRUMENTATION CONTROL MODULE



4.2 TYPICAL WIRING DIAGRAMS

4.2.1 3 PHASE, 4 WIRE WITH RESTRICTED EARTH FAULT PROTECTION



NOTE:- Earthing the neutral conductor 'before' the neutral CT allows the module to read earth faults 'after' the CT only (Restricted to load / downstream of the CT)
 Earthing the neutral conductor 'after' the neutral CT allows the module to read earth faults 'before' the CT only (Restricted to generator / upstream of the CT)

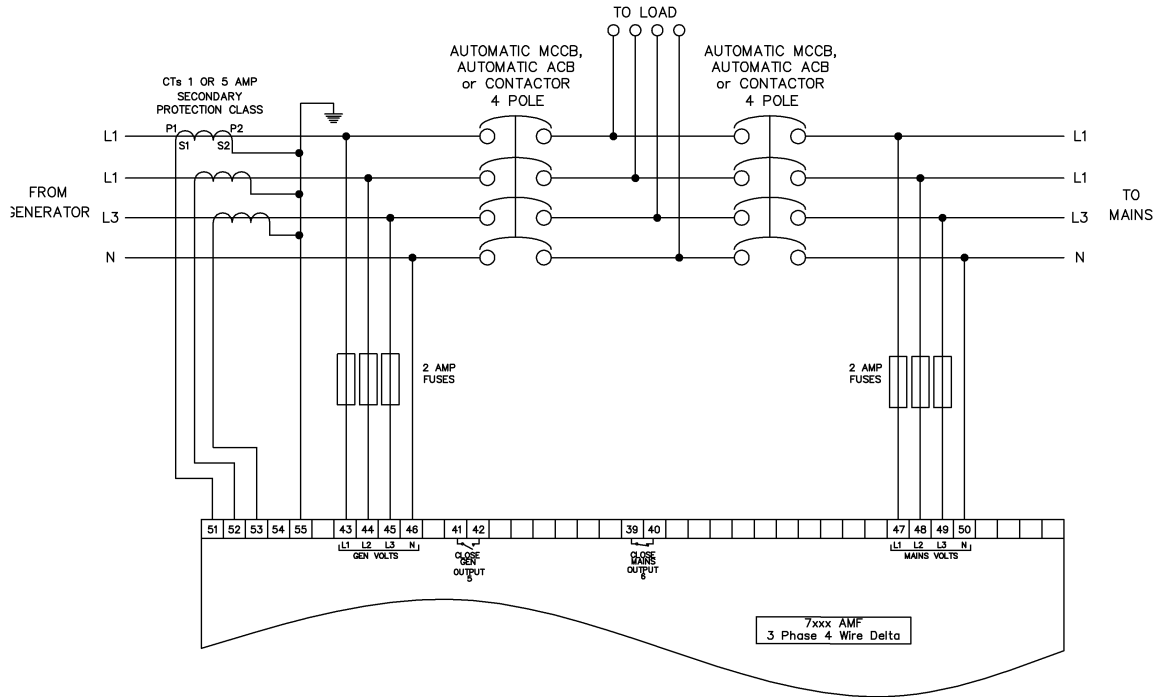
NOTE:- The MAINS CT is only required on for 'true' peak lop systems where the mains is held at a constant level and the generator provides variable power to the load.

4.3 ALTERNATIVE TOPOLOGIES

The 7000 controller is factory configured to connect to a 3 phase, 4 wire Star connected alternator. This section details connections for alternative AC topologies. Ensure to configure the 7000 series controller to suit the required topology.

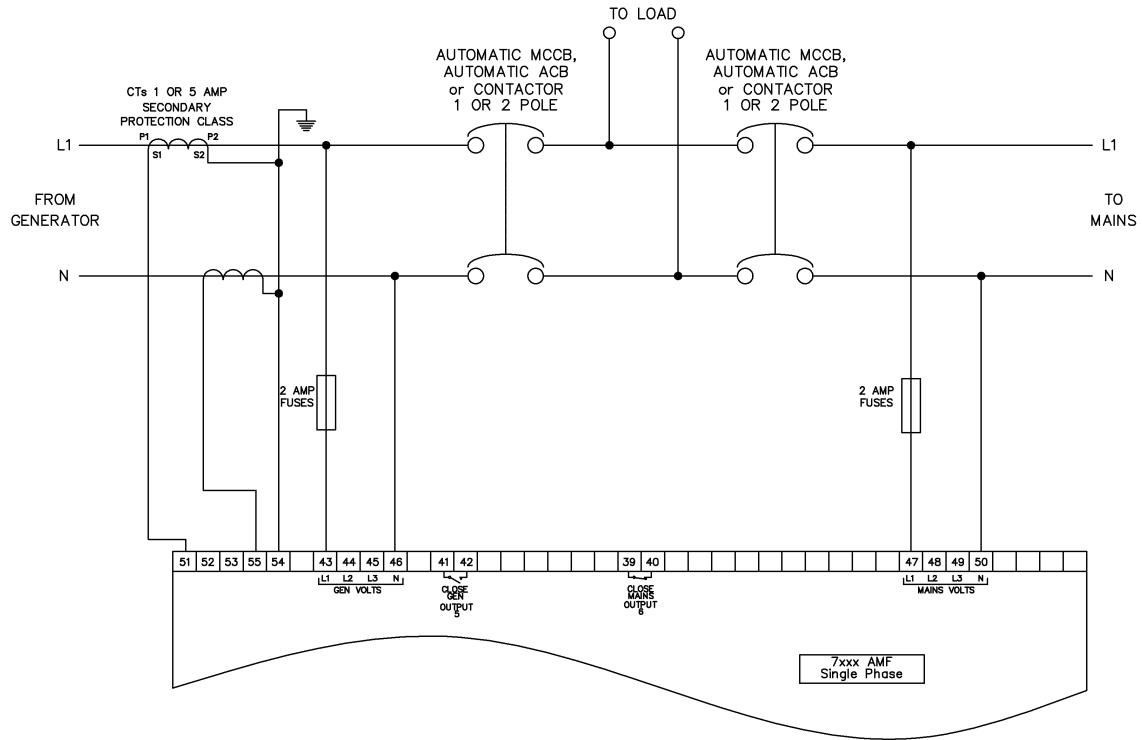
NOTE:- Further details of module configuration are contained within the DSE7000 Series configuration software manual (DSE part number 057-078)

4.3.1 3 PHASE, 4 WIRE WITHOUT EARTH FAULT PROTECTION

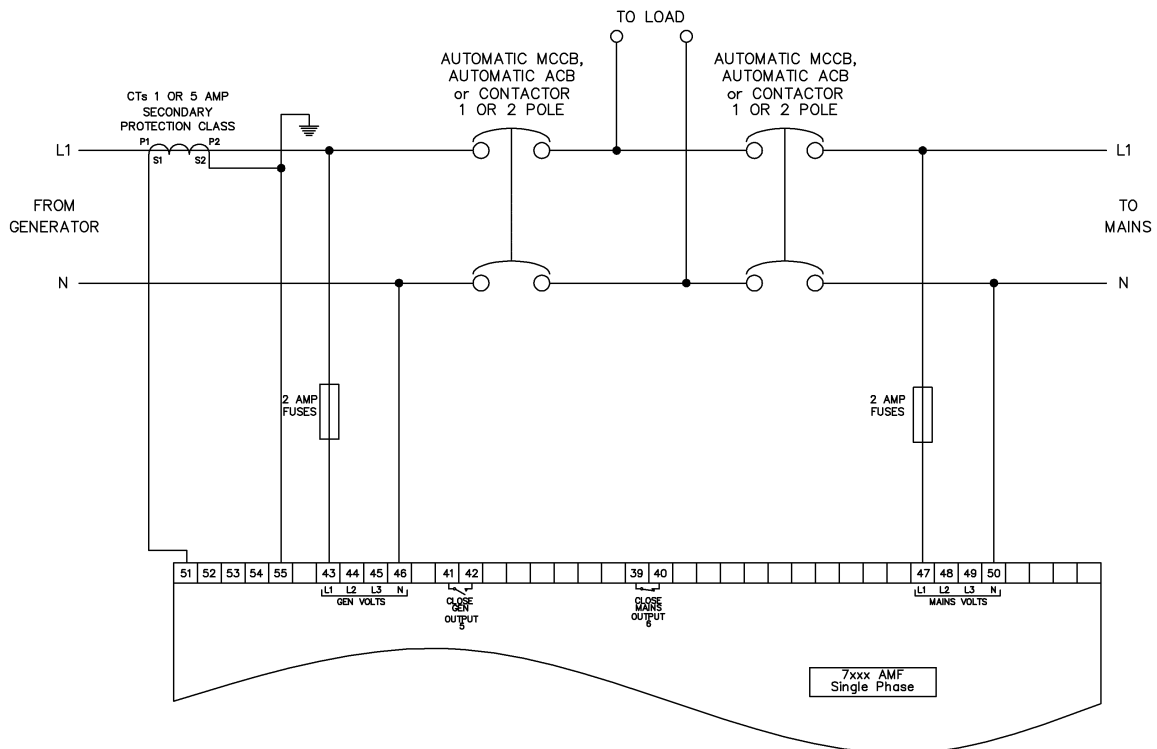


4.3.2 SINGLE PHASE WITH RESTRICTED EARTH FAULT

NOTE:- Earthing the neutral conductor 'before' the neutral CT allows the module to read earth faults 'after' the CT only (Restricted to load / downstream of the CT)
 Earthing the neutral conductor 'after' the neutral CT allows the module to read earth faults 'before' the CT only (Restricted to generator / upstream of the CT)

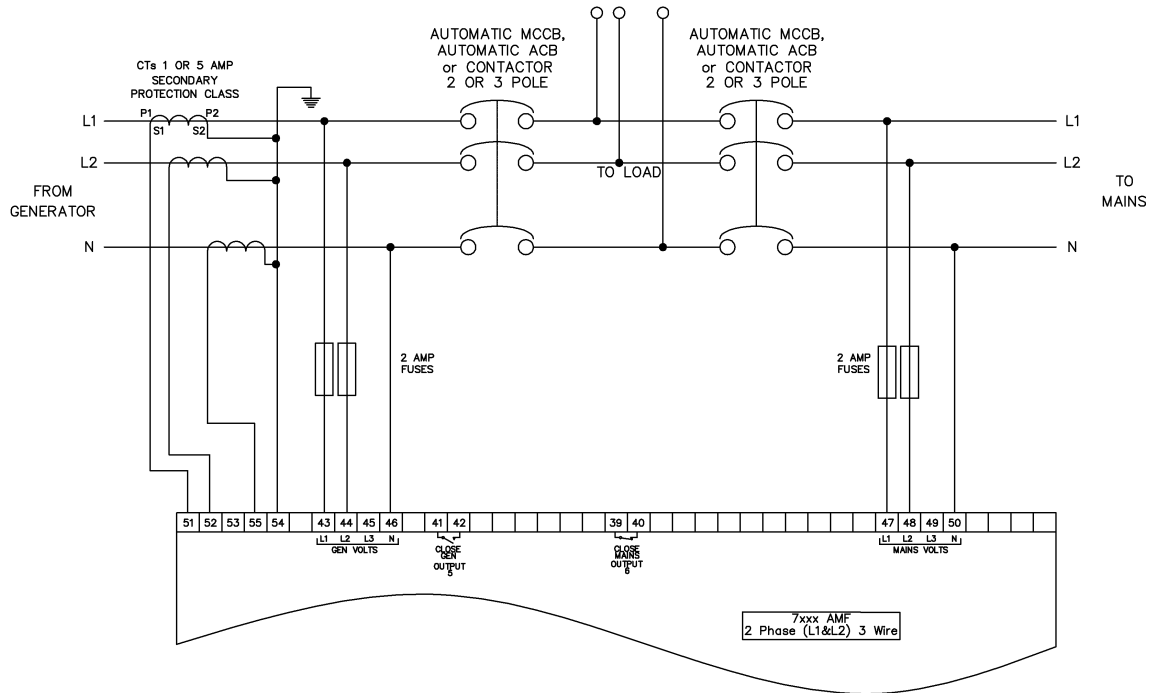


4.3.3 SINGLE PHASE WITHOUT EARTH FAULT

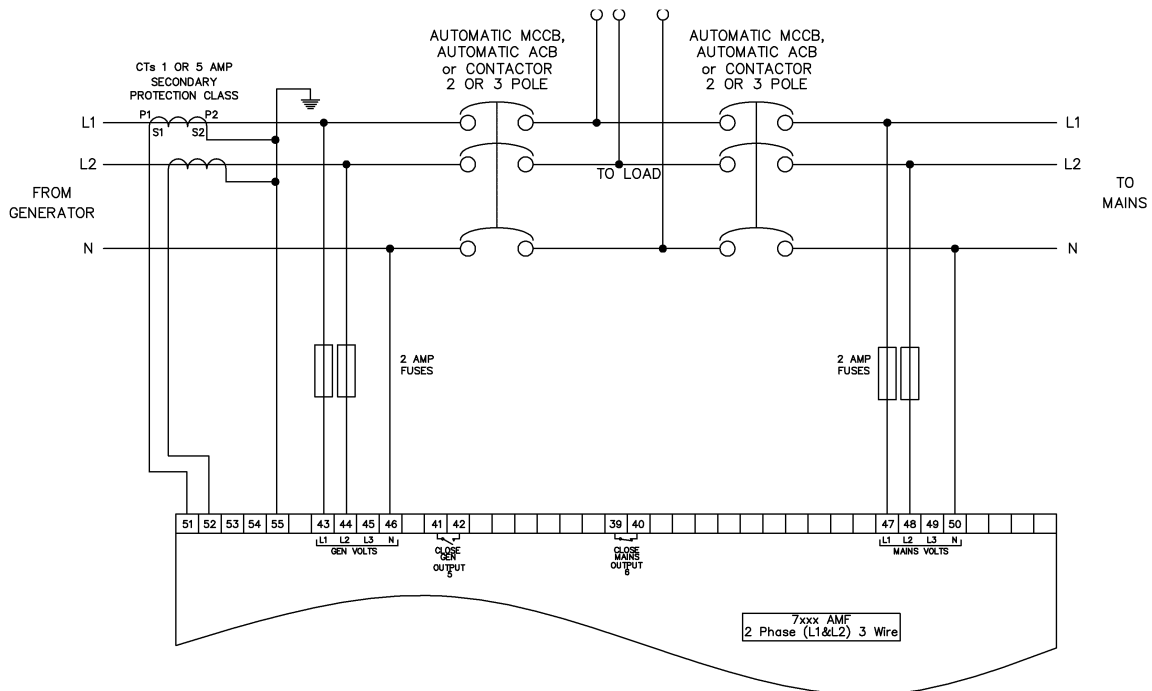


4.3.4 2 PHASE (L1 & L2) 3 WIRE WITH RESTRICTED EARTH FAULT

NOTE:- Earthing the neutral conductor 'before' the neutral CT allows the module to read earth faults 'after' the CT only (Restricted to load / downstream of the CT)
 Earthing the neutral conductor 'after' the neutral CT allows the module to read earth faults 'before' the CT only (Restricted to generator / upstream of the CT)

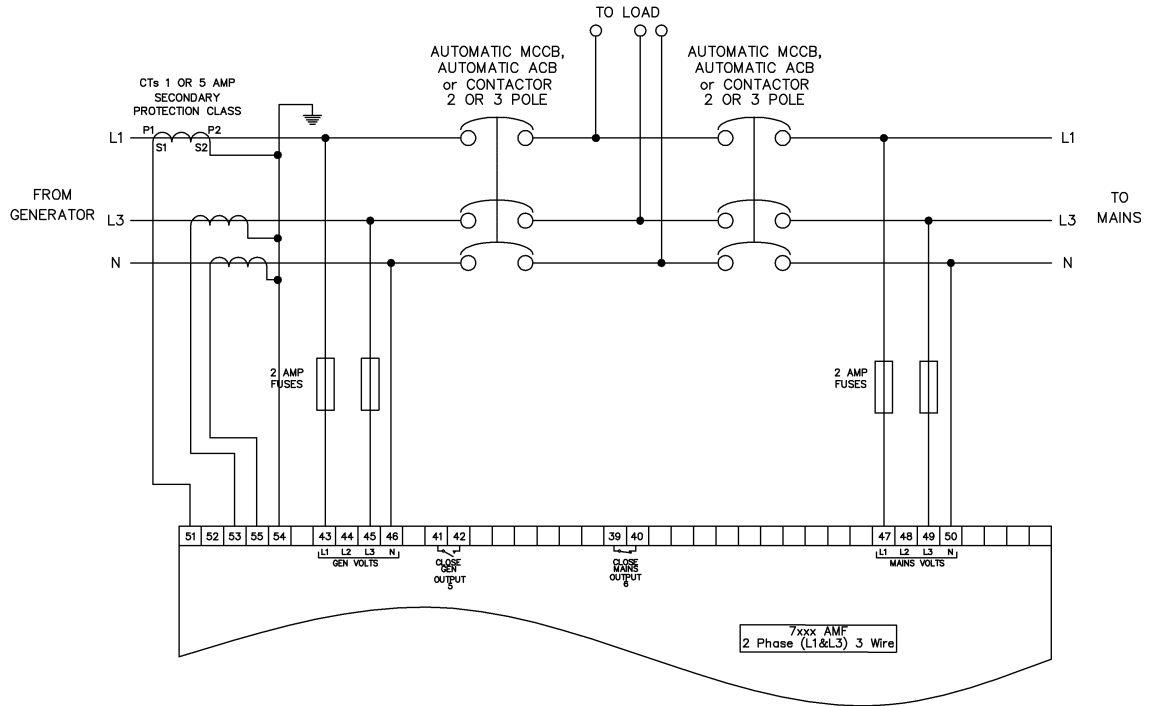


4.3.5 2 PHASE (L1 & L2) 3 WIRE WITHOUT EARTH FAULT

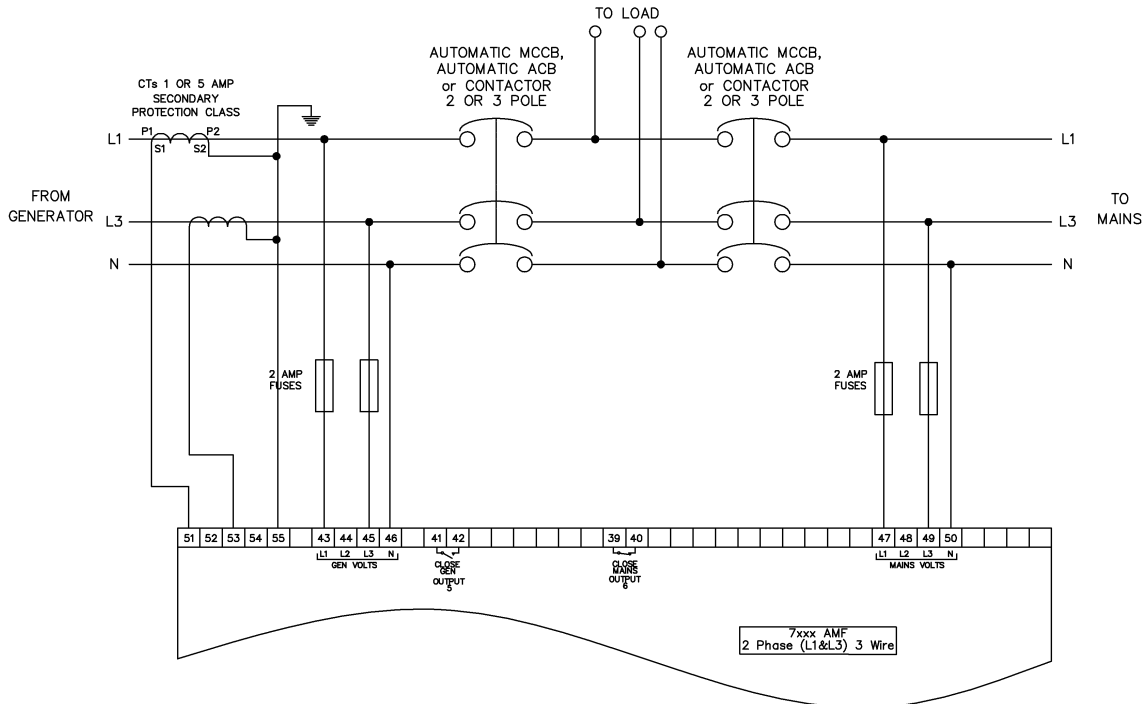


4.3.6 2 PHASE (L1 & L3) 3 WIRE WITH RESTRICTED EARTH FAULT

NOTE:- Earthing the neutral conductor 'before' the neutral CT allows the module to read earth faults 'after' the CT only (Restricted to load / downstream of the CT)
 Earthing the neutral conductor 'after' the neutral CT allows the module to read earth faults 'before' the CT only (Restricted to generator / upstream of the CT)



4.3.7 2 PHASE (L1 & L3) 3 WIRE WITHOUT EARTH FAULT MEASURING



4.3.8 3 PHASE 4 WIRE WITH UNRESTRICTED EARTH FAULT MEASURING

