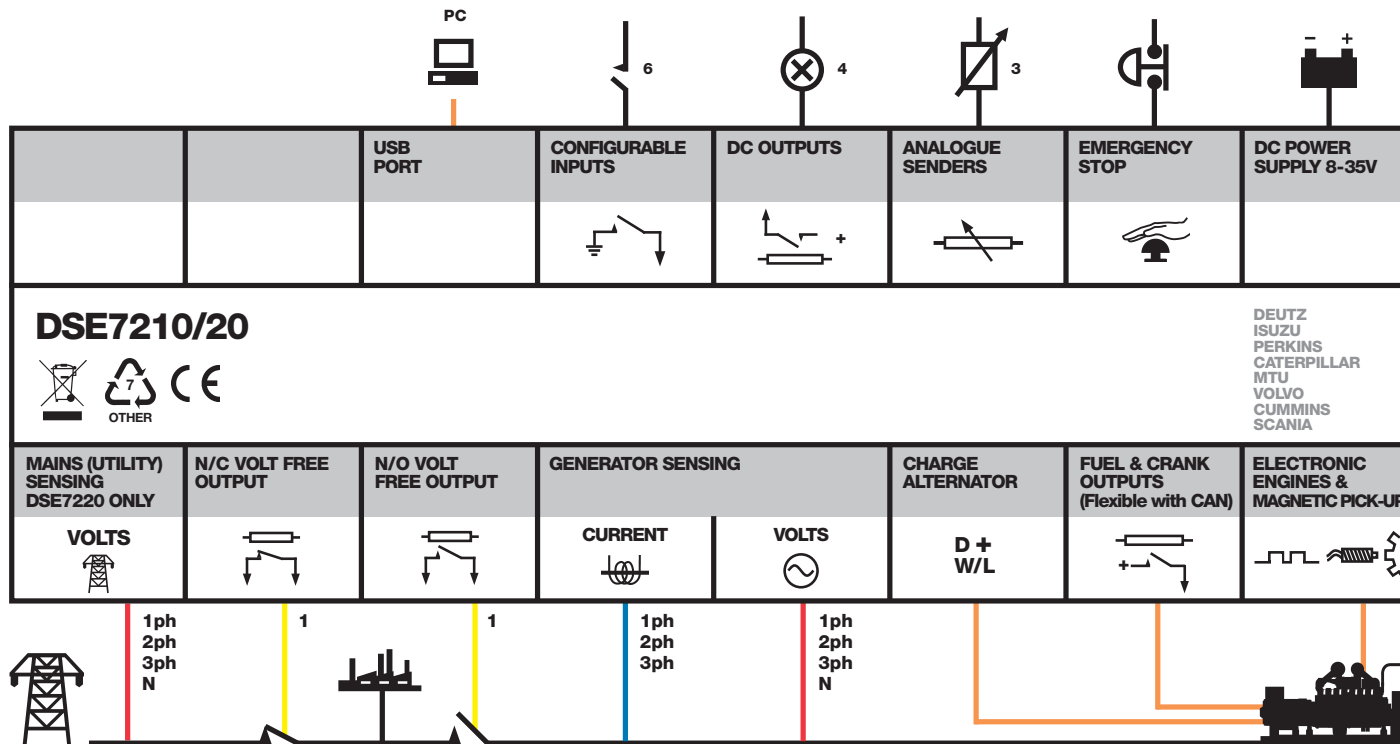


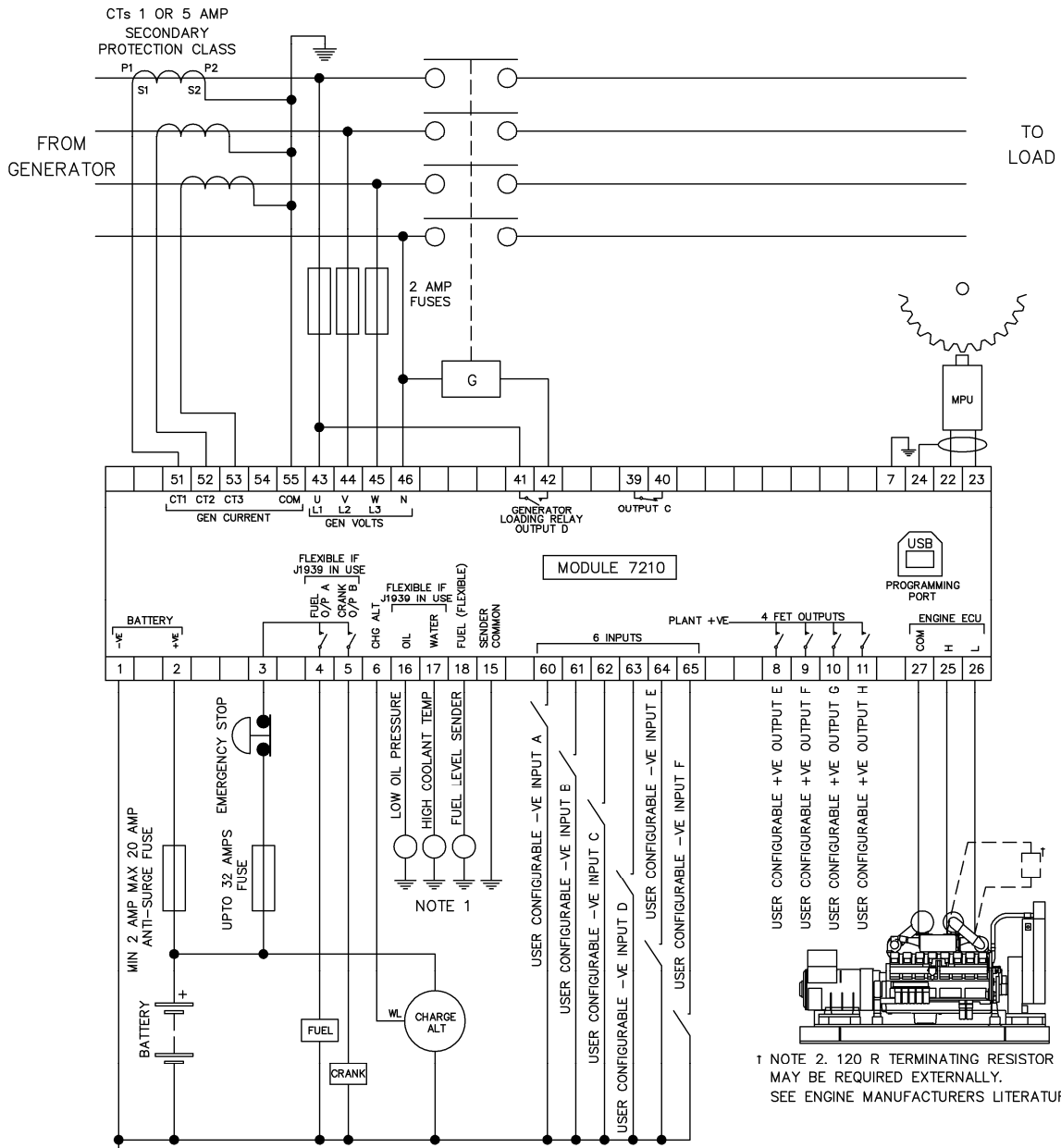
# DSE7210/20

## AUTO START & AUTO MAINS FAILURE CONTROL MODULES



### 4.3.1 7210 AUTOSTART CONTROLLER

#### 3 phase, 4 wire

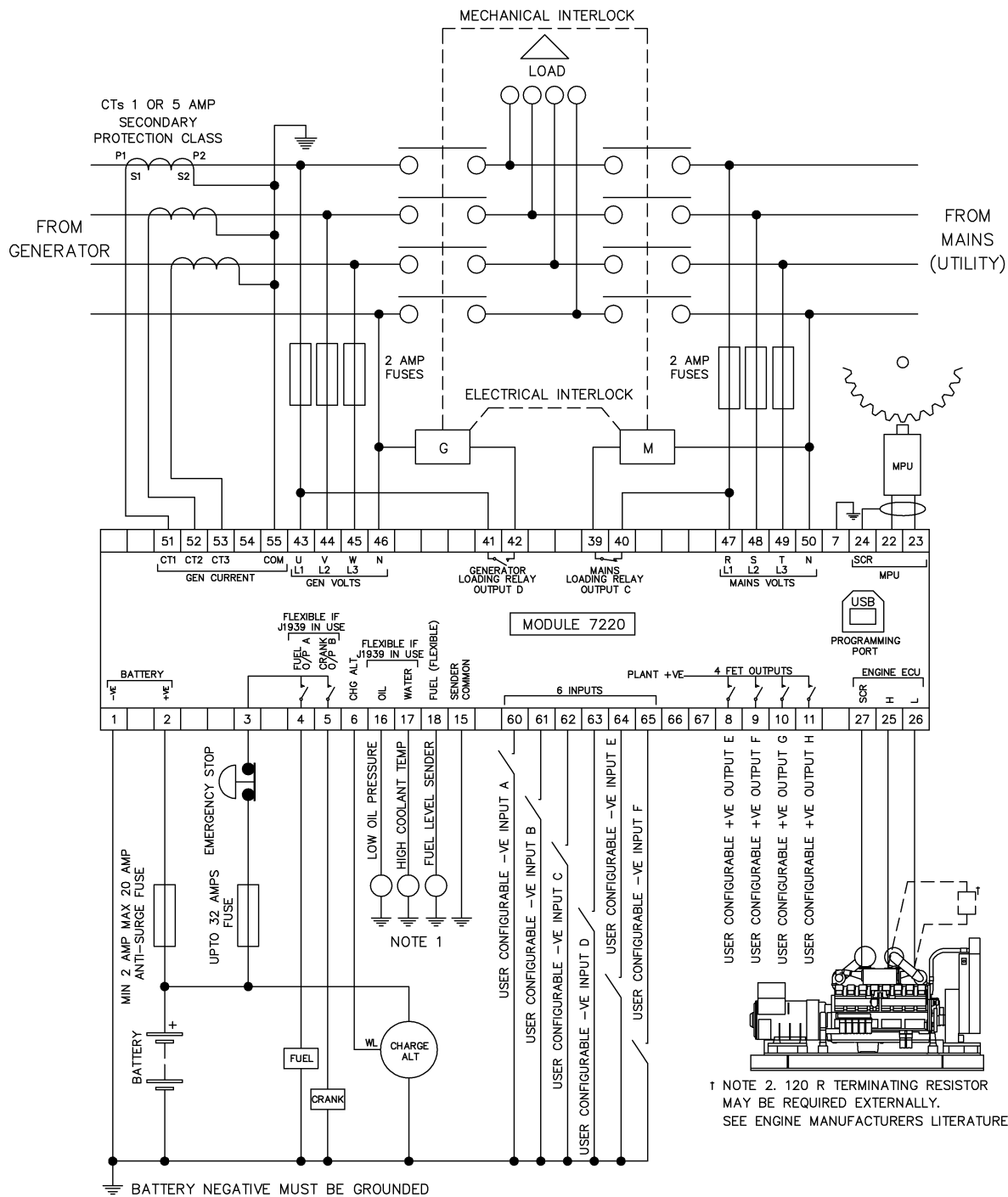


BATTERY NEGATIVE MUST BE GROUNDING  
 TERMINALS SUITABLE FOR 22-16 AWG (0.6mm - 1.3mm ) FIELD WIRING TIGHTENING TORQUE = 0.8Nm (7lb-in)

NOTE 1  
 THESE GROUND CONNECTIONS MUST BE ON THE ENGINE BLOCK, AND MUST BE TO THE SENDER BODIES.  
 THE GROUND WIRE TO TERMINAL 15 MUST NOT BE USED TO PROVIDE A GROUND CONNECTION TO ANY OTHER DEVICE

### 4.3.2 7220 AMF CONTROLLER

**3 phase, 4 wire**



TERMINALS SUITABLE FOR 22-16 AWG (0.6mm - 1.3mm ) FIELD WIRING

TIGHTENING TORQUE = 0.8Nm (7lb-in)

NOTE 1  
THESE GROUND CONNECTIONS MUST BE ON THE ENGINE BLOCK, AND MUST BE TO THE SENDER BODIES.

THE GROUND WIRE TO TERMINAL 15 MUST NOT BE USED TO PROVIDE A GROUND CONNECTION TO ANY OTHER DEVICE

† NOTE 2. 120 R TERMINATING RESISTOR MAY BE REQUIRED EXTERNALLY. SEE ENGINE MANUFACTURERS LITERATURE