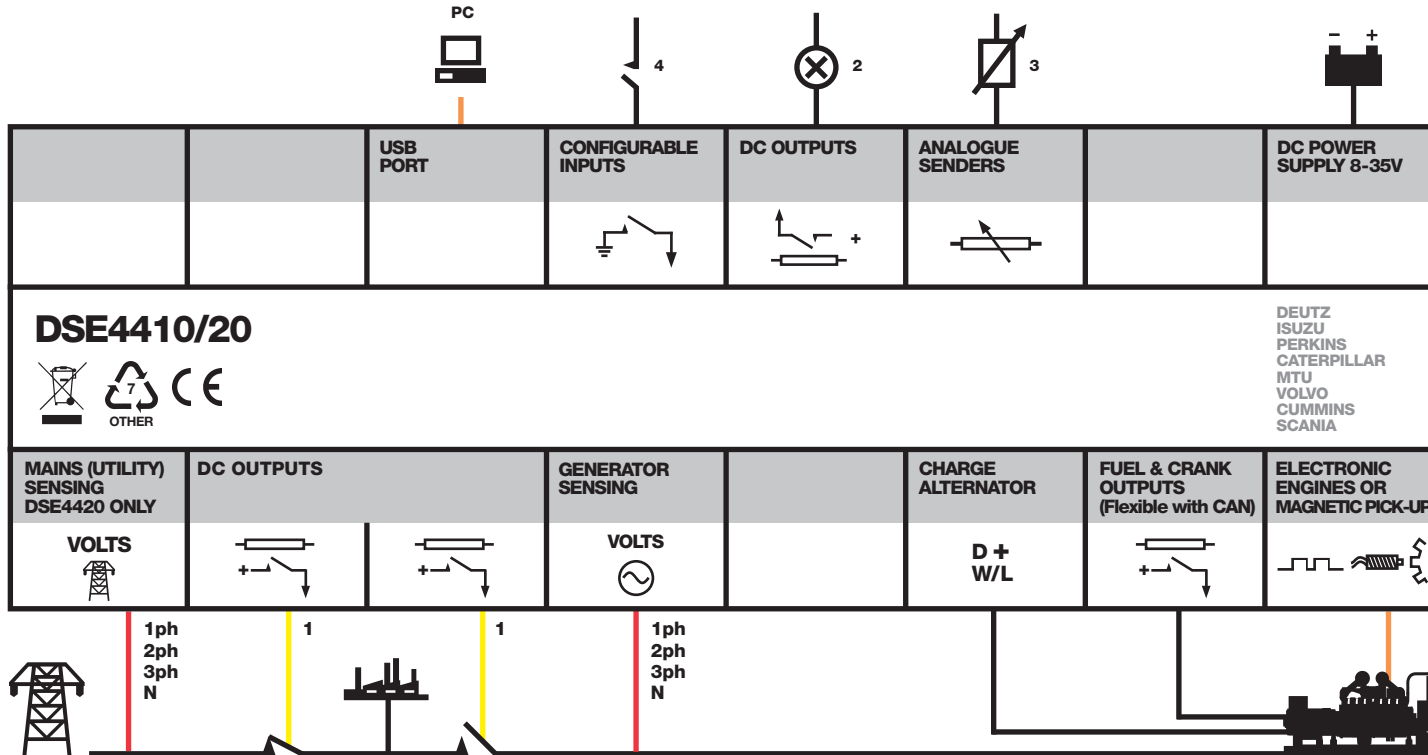


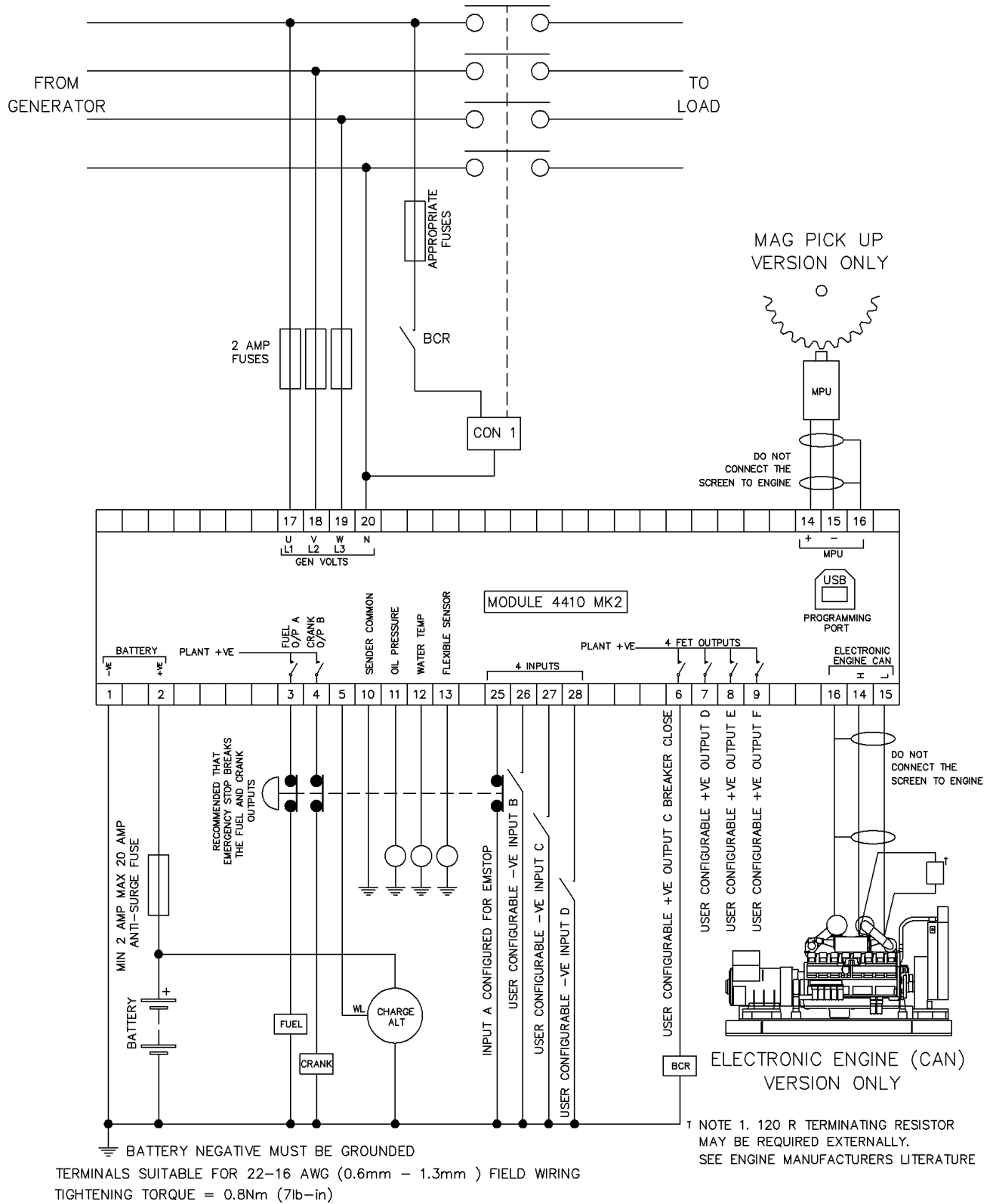
# DSE4410/20

## AUTO START & AUTO MAINS FAILURE CONTROL MODULES

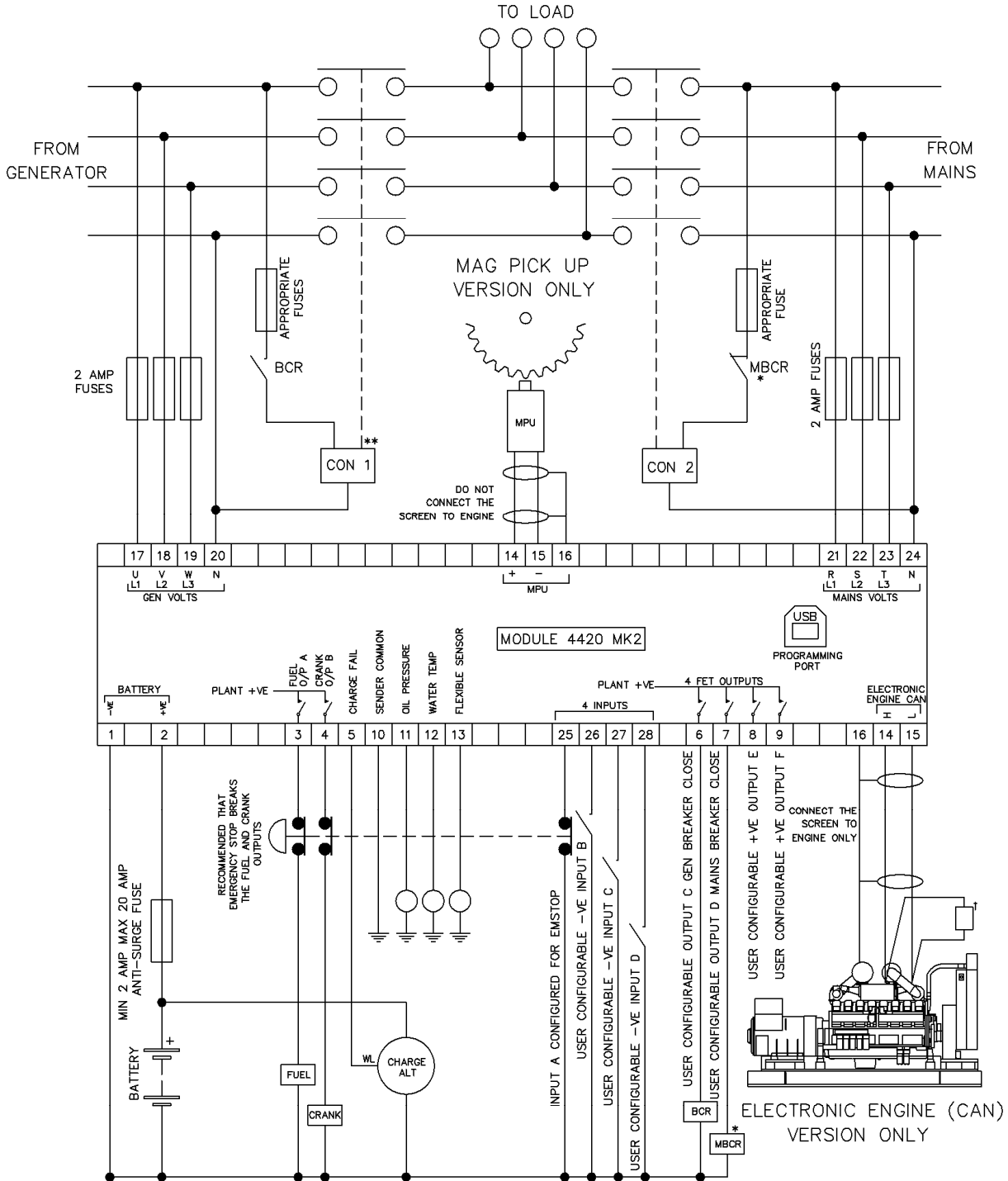


## 4.2 TYPICAL WIRING DIAGRAMS

### 4.2.1 DSE 4410 MK2 AUTOSTART MODULE



4.2.2 DSE 4420 MK2 AUTO MAINS FAILURE MODULE



BATTERY NEGATIVE MUST BE GROUNDED  
 TERMINALS SUITABLE FOR 22-16 AWG (0.6mm - 1.3mm ) FIELD WIRING  
 TIGHTENING TORQUE = 0.8Nm (7lb-in)

\*\*NOTE 3. IT IS RECOMMENDED THAT THE GENERATOR AND MAINS SWITCHING DEVICES ARE MECHANICALLY AND ELECTRICALLY INTERLOCKED.

† NOTE 1. 120 R TERMINATING RESISTOR MAY BE REQUIRED EXTERNALLY. SEE ENGINE MANUFACTURERS LITERATURE

\* NOTE 2. MAINS BREAKER CLOSED OUTPUT SHOULD BE CONFIGURED FOR DE-ENERGISE CLOSE MAINS, AND USE THE NORMALLY CLOSED CONTACTS OF MBCR