



# NEXYS NEX/GB-2008/1



CALL US TODAY  
1-888-POWER-58

REQUEST A QUOTE  
parts@genpowerusa.com

 **Global Power Solution™**  
SHOP ONLINE  
[www.genpowerusa.com](http://www.genpowerusa.com)

## PRÉSENTATION

The MICS NEXYS is SDMO's entry level control panel, proposed as standard on our 7.5 to 275 kVA generator sets.

Fitted with a polycarbonate front panel and an LCD screen, it has a user-friendly design and offers high quality features for simple and reliable control of your generator set.

The MICS Nexys enables to operate both in manual or automatic mode.

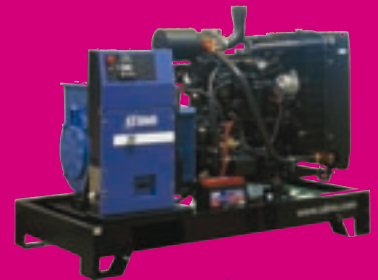
## NEXYS



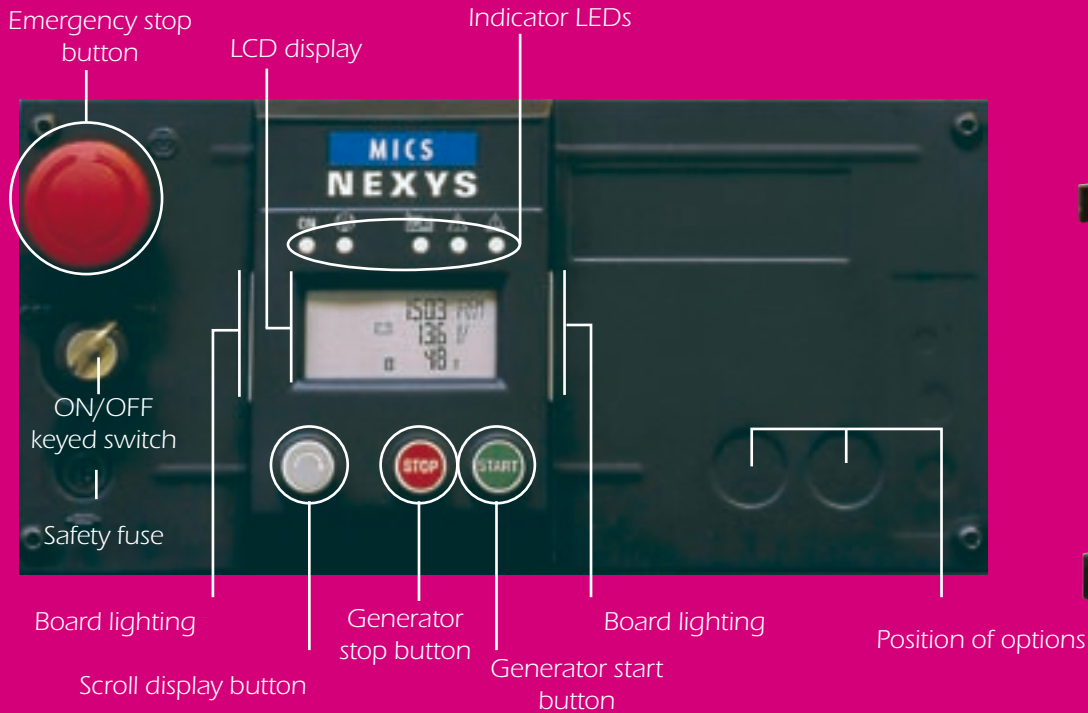
Console for generator sets up to 80 kVA



Console for generator sets up to 150 kVA



Console for generator sets up to 275 kVA



## PROTECTION AND OPERATION

### Operation, alarm and fault LEDs



GREEN:  
running

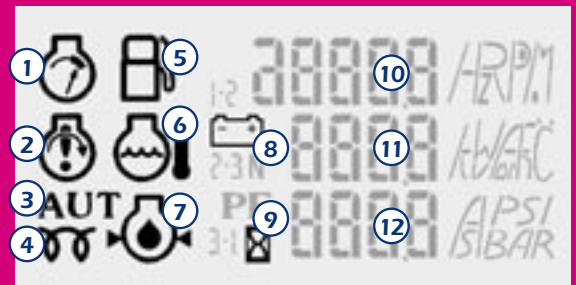
RED:  
emergency stop triggered

GREEN:  
generator set  
running

ORANGE:  
Alarm

RED:  
Fault

### Operating, alarm and fault pictograms



#### Fonctionnement

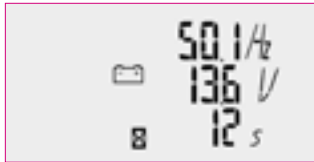
- 3 + 9 AUTO mode
- 4 + 9 Air preheating
- 5 + 10 Fuel level
- 6 + 11 Water temperature
- 7 + 12 Oil pressure
- 8 + 11 Battery voltage

#### Alarmes et défauts

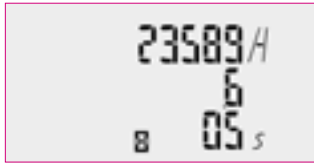
- 1 Overspeed
- 2 No start-up
- 5 Low fuel level
- 6 Water temperature
- 7 Oil pressure
- 8 Charge generator

Standard LCD display

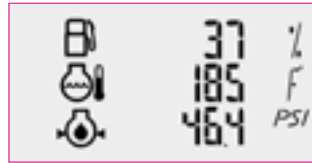
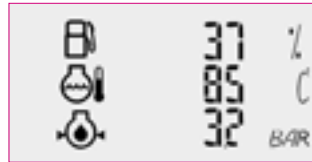
Frequency (Hz)  
Battery voltage (V)  
Delay<sup>(1)</sup>(s)



Time meter  
1<sup>st</sup> line: Hours  
2<sup>nd</sup> line: tenths of hours  
Delay<sup>(1)</sup>(s)

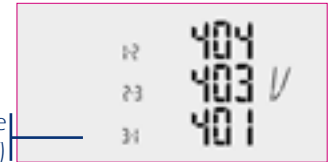


Generator set speed (tr/mn)  
Battery voltage (V)  
Delay<sup>(1)</sup>(s)

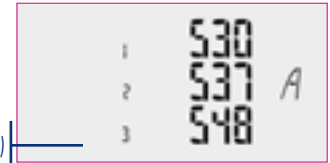


Option LCD display

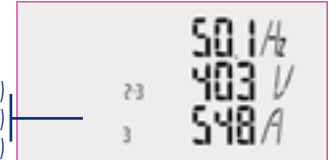
Fuel level (%)  
Water temperature (°C)  
Oil pressure (Bar)  
EU Units  
Phase-to-phase voltages (V)



Fuel level (%)  
Water temperature (°F)  
Oil pressure (PSi)  
US Units  
Amperages (A)



Phase voltages (V)  
Fréquence (Hz)  
Voltage (V)  
Amperage (A)



(1) Préchauffage air, tentative de redémarrage, micro-coupure, retour secteur

OPTIONS

- CM301** Availability for automatic start-up on external order
- CM302** Automatic pack : battery charge + relays and 220/240 V motor preheating resistor (in combination with CM301)
- CM303** «Measurements» board (U, V, I)
- CM304** Adjustable mains detector in cabinet
- CM305** Remote control pack : generator running, general fault, alarm or low fuel level fault
- CM307** On-screen display of analogue variables (OP, WT)
- CM308** Remote control with box
- CM310** Voltage adjustment potentiometer
- CM311** Speed adjustment potentiometer
- CM312** Audible alarm fitted in the cabinet
- CM315** Low water level safety device
- CM316** Low gas oil level safety device
- CM318/CM319** Fixed differential protection
- CM320** Time and threshold adjustable differential protection
- CM324** Central processing unit with neutral
- CM325** Central processing unit without neutral

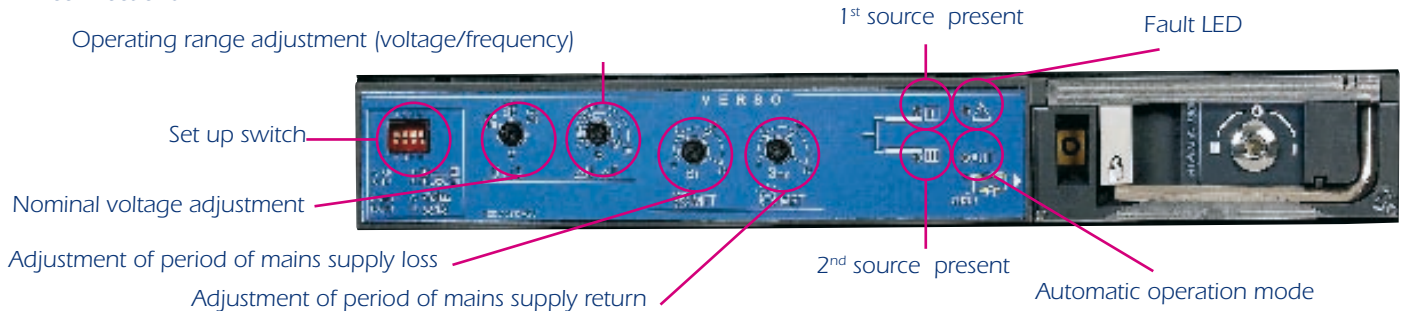
Normal/emergency switches

SDMO offers a new normal/emergency switch for equipment rated from 35 to 160A: VERSO. For equipment with higher ratings, the existing normal/emergency switch coupled to a new version of the TSI module is still available.

**NEW**

**VERSO**

VERSO is not only a changeover switch but it also features integrated mains detection and enables automatic start-up and operation of the generating set in the event of a mains power cut. To increase the reliability and safety of our changeover system, VERSO now enables switch changeover. This control unit uses a 4-pole system, with voltages from 208 to 440V. The control units are designed to enable even cables with large cross-sections to be easily connected. The control unit can be opened via the front panel and both side panels, providing easy access to the terminal connections.



**TSI**

Both innovative and original in design, the TSI is perfectly suited to applications where the transfer of a main source to a replacement source is crucial for the running of your installations. Straightforward and easy to use, the special feature of this module is that it is automatically configured when voltage is provided from the grid side.





## Subsidiaries

### ARGENTINA

SDMO ARGENTINA S.A.

TEL. +54 114 836 35 11 - FAX +54 114 836 35 16

### BELGIUM

SDMO NV/SA

TEL. +32 3 646 04 15 - FAX +32 3 646 06 25

### BRAZIL

SDMO DO BRAZIL

TEL. +55 (11) 43 908 434 - FAX +55 (11) 43 908 434

### SPAIN

SDMO INDUSTRIES IBERICA

TEL. +34 902 30 56 56 - FAX +34 93 580 31 36

### US

SDMO GENERATING SETS

TEL. +1 305 863 00 12 - FAX +1 305 863 97 81

### UK

SDMO ENERGY LTD

TEL. +44(0) 1932 345 777 - FAX +44(0) 1932 350 033

### NIGERIA

SDMO LAGOS

TEL. +234 (0) 80 56 66 64 44 - FAX +33 (0) 1 72 27 55 62

## Offices

### SOUTH AFRICA

SDMO JOHANNESBURG

TEL. +33 (0) 631 594 701 - FAX +33 (0) 172 276 151

### ALGERIA

SDMO ALGER

TEL. +213 21 68 12 12 - FAX +213 21 68 14 14

### DUBAI

SDMO MIDDLE EAST

TÉL. + 971 43 35 79 10 - FAX +33 (0)1 72 27 55 52

### RUSSIA

SDMO MOSCOW

TEL. +7 926 838 05 34 - FAX +33(0)1 72 27 55 48



SDMO Industries - 12 bis rue de la Villeneuve  
CS 92 848 - 29 228 Brest Cedex 2 - Francia  
Teléfono: +33(0) 2 98 41 41 41 - Fax +33(0) 2 98 41 63 07  
[www.sdmo.com](http://www.sdmo.com)



SDMO industries  
Implantation en France

SHOP ONLINE  
[www.genpowerusa.com](http://www.genpowerusa.com)

CALL US TODAY  
1-888-POWER-58

REQUEST A QUOTE  
[parts@genpowerusa.com](mailto:parts@genpowerusa.com)