

# 1000 kW Industrial Diesel Generator

GENPOWERUSA GPM-M1040-60T2

EPA Tier 2 Stationary Emergency



GENERAL POWER<sup>™</sup>  
THE GENERATOR COMPANY

## Power Ratings

1,000kW 1,250kVA Standby ESP  
950kW 1,188kVA Prime PRP



## Mitsubishi Engine

1528HP S12H-Y2PTAW-1

EPA Tier 2 Stationary Emergency

## Stamford Alternator

S6L1D-F41

## Deep Sea Controller

DSE7320

## Siemens Circuit Breaker

Moulded-Case: 80 to 1,600A

Air Circuit Breaker: 2,000 to 4,000A

## Quality Standard

ISO9001:2015 and individually load bank tested in USA

PICTURES SHOWN ARE FOR ILLUSTRATION PURPOSE ONLY  
ACTUAL PRODUCT MAY VARY

## Your power generation solution

Powered by the most reliable components in the industry: EPA Tier 2 Mitsubishi diesel engines, Stamford alternators, Deep Sea digital controllers, & Siemens circuit breakers, GENPOWERUSA industrial diesel generators have been meticulously designed to deliver maximum ROI, versatility and dependability for even the most demanding standby and prime applications.

Voltage	Power ESP kWe/kVA	Power PRP kWe/kVA	Standby Amps	Prime Amps	Phase
480/277	1,000/1,250	950/1,188	1,504	1,428	3
240/120 DELTA	1,000/1,250	951/1,189	3,007	2,860	3
220/127	1,000/1,250	950/1,188	3,280	3,316	3
208/120	1,000/1,250	951/1,189	3,470	3,300	3

### ATB (Air to Boil)

Unit mounted radiator with 25C (77F) ambient air capability at the standby (ESP) rating

### POWER RATINGS

PRP: Prime Power is available for an unlimited number of annual operating hours in variable load applications, in accordance with ISO 8528-1:2018

ESP: Standby Power is applicable for supplying emergency power in variable load applications in accordance with ISO 8528-1:2018

### AMBIENT CONDITIONS

According to ISO 8528-1:2018

### LOAD ACCEPTANCE

According to ISO 8528-5, Class G2

Open Skid Dimensions (Integral 1-Wall Fuel Tank)	Standard Enclosure Dimensions (Integral 1-Wall Fuel Tank)
L: 4,810 mm (189.5 in)	L: 7,800 mm (307.1 in)
W: 1,730 mm (68.2 in)	W: 2,258 mm (88.9 in)
H: 2,619 mm (103.2 in)	H: 4,040 mm (159.1 in)
305 Gallons	700 Gallons

# Mitsubishi Engine Specifications

## General Data

Manufacturer	Mitsubishi S12H-Y2PTAW-1 Turbocharged and Intercooler Tier 2
Cylinders-arrangement	12-L
Displacement	37.1-L
Bore (mm) X Stroke (mm)	150x175
Compression Ratio	14.5:1
Speed (RPM)	1800
Maximum stand-by power at rated RPM	1,140 kW (1,528 HP)
Governor	Electronic

## Fuel Consumption

100% Prime Load	300.6 L/hr (79.4 Gal/hr)
75% Prime Load	240.0 L/hr (63.4 Gal/hr)

## Runtime (Open-Skid)

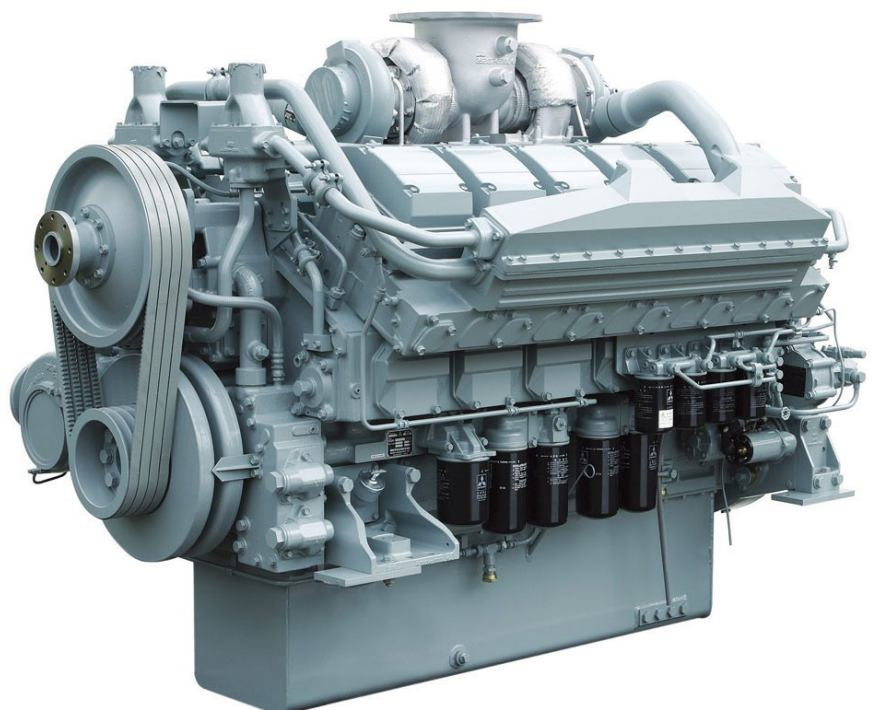
Integral Tank (305 Gal)	4 Hours @ 100% Prime 5 Hours @ 75% Prime
-------------------------	---

## Runtime (Enclosed)

Integral Tank (700 Gal)	8 Hours @ 100% Prime 11 Hours @ 75% Prime
-------------------------	--

## U.S. EPA Compliance

Tier	2 Stationary Emergency
------	------------------------



# Stamford Alternator Specifications

## General Data

Manufacturer	Stamford
Alternator	S6L1D-F41
Number of phases	3
Power factor (Cos Phi)	0.8
Altitude (M)	<1000
Overspeed (RPM)	2250
Number of poles	4
Excitation System	Permanent Magnet Generator (P.M.G.)
Insulation class/ Temperature class	H / H
Automatic Voltage Regulator	Stamford MX321
Coupling	Direct / Single Bearing
Voltage regulation 0 to 100%	+/- 1.0%



# Control/Electronics Features

## Deep Sea DSE7320MKII Digital Controller

Microprocessor-based generator controller with dual-core main processor and extended memory	✓
User friendly, large, 4-line back-lit LCD text display with support for up to 7 display languages	✓
Support for up to 3 wired-remote mimic display/control units	✓
Engine and alternator control	✓
Manual, auto, and test operation mode	✓
Full range of engine and electrical measurements	✓
kW/kVA/kvar/hours counter	✓
250 event history log	✓
Push buttons for easy operation	✓
Operator Screens: Status, Engine, Alternator, Alarms, Event Log, and ECU Alarm	✓

## Warning Alarms

50+ fully configurable alarms	✓
-------------------------------	---

## Automatic Shutdowns

Under and Over voltage alarm (ANSI 27, ANSI 59)	✓
Over load alarm (ANSI 32)	✓
Over current alarm (ANSI 50)	✓
Under and Over frequency (ANSI 81)	✓
Under and Over speed	✓
High coolant temperature	✓
Low oil pressure	✓
Low coolant level	✓
Earth fault alarm (ANSI 87G)	o
Fuel containment leak	o
Breaker safety switch	o
Voltage selector switched when engine running	o

✓ = Standard Feature    o = Optional Upgrade

## Deep Sea DSEA109 Digital AVR

Advanced digital automatic voltage regulator with CANBUS and LED indicators	o
↳ Under frequency roll off protection with optional instantaneous step	
↳ Loss of voltage sensing protections	
↳ Over excitation protection	
↳ Soft start ramping mode with ON/OFF switch. Temporarily reduces the load & torque in the powertrain and current surge of motor during start-up, permitting the sizing of a genset with a lower power rating.	o

## Deep Sea DSEWEBNET Cloud-Based Remote Monitoring

Many Internet-access hardware options: 3G/4G/Ethernet	o
↳ Free 24/7 multi-user, powerful, industry leading remote monitoring software (requires Internet hardware/access)	
↳ Available via free desktop, iOS and Android app	
↳ Customizable branding for corporate accounts	
↳ Configurable event triggers and automated reporting for up to 25 users	
↳ Geo-fencing and asset tracking via GPS	o

## Load-Sharing Configuration Upgrades

Set-to-set synchronizing and load sharing package, set mounted, Deep Sea DSE8610	o
Set-to-set synchronizing and load sharing package, set mounted, DEIF AGC 150	o
Remote "overview" display panel kit (multi-genset), 10" touch-enabled, multi-color, Deep Sea DSE8004 <sup>(1)</sup>	o

## Control and Communication Accessories

Remote "mimic" control/display panel kit (single genset), Deep Sea DSE7320MKII <sup>(1)</sup>	o
Remote annunciator panel kit (single genset), Deep Sea DSE2548: 8;16; or 24x lights <sup>(1)</sup>	o
Output expansion module kit, Deep Sea DSE2157 8x configurable relay contacts	o
Input expansion module kit, Deep Sea DSE2130 8x configurable digital inputs (up to 4 analog)	o

(1) Available either as indoor-rated for surface mounting or outdoor-rated inside NEMA3R box



# General Features

## Engine System

Electrolyte-charged battery with rack, cables, and rubber booted connections	✓
Oil drain extension with in-line valve	✓
Electronic isochronous governing	✓
Racor water/fuel separator filter	o
Hotstart oil pan heater	o
Hotstart battery heater	o
Hotstart automatic coolant heater	o
Hotstart automatic forced circulation coolant heater	o
5 AMP ELECTRONIC automatic battery charger	o
3 AMP SOLAR automatic battery charger	o
10 AMP ELECTRONIC UL intelligent automatic battery charger with configurable 2-3-4 stage charging	o
AMOT Positive air intake shutdown	o
Extended engine warranty: 3 years or 4,000 hours	o
Extended engine warranty: 4 years or 5,000 hours	o
Extended engine warranty: 5 years or 10,000 hours	o

## Cooling System

Industrial grade cooling system	✓
Coolant drain extension with in-line valve	✓
Fan guards	✓
Belt guards	o
Radiator and oil drains plumbed to a convenient ports box on the exterior of the skid	o

## Exhaust System (Open-type units)

Stainless steel flexible exhaust connector	o
10dB industrial class silencer	o
29dB residential class silencer	o
35dB critical class silencer	o

## Alternator System

Full load rated with thermo-magnetic switch protection	✓
Skewed rotor and 2/3 pitch winding suppress triple harmonics and guarantee a superior voltage waveform	✓
Windings are vacuum-impregnated with fungus resistant epoxy	✓
Class H insulation and self-ventilated drip-proof design	✓
Analog automatic voltage regulator (AVR)	✓
Digital automatic voltage regulator (DAVR)	o
Self-excited AVR power and control	✓
Auxiliary-excited advanced AVR power and control (by auxiliary winding or permanent magnet generator)	o
Alternator oversizing	o
Anti-condensation heater	o
Reinforced impregnation, coastal environment	o
Reinforced impregnation, marine/harsh environment, alternator air filter	o
Winding temperature sensors	o

## Main Line Breaker System

Main line circuit breaker, output rated, 80% rating	✓
Main line circuit breaker, output rated, 80% rating, UL listed	o
2nd main line circuit breaker, output rated, 80% rating, UL listed	o
Breaker shunt trip	o
Electronic trip breaker	o
Grounding system: TN-C (combined PEN conductor performs the function of both PE and N conductor)	✓
Grounding system: TN-S (PE and N via separate conductors that are connected together only near power source)	o

## Base Tank System

Customizable capacity/runtime: 60 Gal to 500 Gal	o
2-PSI factory pressure tested	✓
Sloped-surface basin design for 110% containment of engine fluids	✓
Electronic fuel level sender with programmable alarms	✓
Mechanical float level with visual gauge	✓
Supply line with in-line check valve	✓
Heavy-duty AVM's isolate engine/radiator/generator from base tank to reduce vibration and noise	✓
Single walled, non UL-142 listed	o
Double walled, non UL-142 listed, 110% containment	o
Double walled, UL142 listed, 110% containment	o
Specialty fuel tanks: UL2085, MDEQ, FDEP/DERM	o
Aluminum or stainless steel construction	o
Fuel leak containment detection switch	o
Herculiner® poly-urethane and rubber granule coating for maximum chip/abrasion/solvent/corrosion/UV resistance	o
Automatic Fuel Transfer Kit. PLC-controlled to maintain a predetermined level in the primary tank as well as automatic start, stop, and fuel overfill check.	o

## Maintenance Kits

1,000 Hour Engine Maintenance Kit includes OIL/FUEL/AIR/COOLANT filters as applicable for mandatory <1,000 hours service intervals	o
2,000 Hour Engine Maintenance Kit includes OIL/FUEL/AIR/COOLANT filters as applicable for mandatory <2,000 hours service intervals	o
Zero-Downtime prevention kit includes: 1x AVR, 1x Diodes Kit, 1x Varistor, 1x Starter Relay, 1x Control Relay, 1x 2 AMP minibreaker, 1x 4 AMP minibreaker, 1x 6 AMP minibreaker, 1x Fuel level sender unit, 1x Fuel lines set	o

## Quality Control

90-point quality control inspection	✓
Standard load bank testing: full load, 30 min, 1.0PF	✓
Extended load bank testing: full load, 1 hour, 1.0PF	o
Extended load bank testing: full load, 1 hour, 0.8PF	o
Customizable witness testing: on-site at factory or remote via virtual session	o

✓ = Standard Feature    o = Optional Upgrade

# Additional Features

## Enclosure System: STANDARD-TYPE



- TYPE: IP56, outdoor rated, weather-proof design with Level 2 sound-attenuation o
- ↳ SILENCER: Residential critical-class silencer for 25dBA sound reduction
- ↳ LEVEL-2 DISCHARGE PLENUM: Dedicated enclosure compartment with built-in air deflecting baffles & completely lined with sound-absorbing material. It houses the silencer & redirects the discharge air from the radiator downwards for enhanced sound reduction
- ↳ HOT AIR DISCHARGE: Indirect, frontal-facing, horizontal air discharge outlet redirects cooling air through sound baffles to minimize sound
- ↳ ACOUSTIC INSULATION: with hydrocarbon sealing film for max sound/flame/moisture resistance
- ↳ STEEL-CONSTRUCTION: 12GA, steel-alloy panels and stainless steel hardware for enhanced corrosion protection o
- ↳ ALUMINUM-CONSTRUCTION: 12GA, aluminum-alloy panels and stainless steel hardware for maximum corrosion resistance o
- ↳ FINISH UPGRADE: Herculiner® poly-urethane & rubber granule coating for maximum chip/abrasion/solvent/corrosion/UV resistance o

## Industrial-Grade Features



- |  |  |
|--|--|
| <ul style="list-style-type: none"> <li>3 position voltage selector switch: 3PH low-wye, 3PH high-wye, 1PH zig-zag <span style="float: right;">o</span></li> <li>4-position voltage selector switch (3ph low-wye, 3ph high-wye, 3ph delta, 1ph zig-zag) <span style="float: right;">o</span></li> <li>External shore power connector (for auto battery charger and auto coolant heater) <span style="float: right;">o</span></li> </ul> | <ul style="list-style-type: none"> <li>Breaker cabinet LED light with auto on/off <span style="float: right;">o</span></li> <li>On/off battery switch <span style="float: right;">o</span></li> <li>Enclosure lighting kit (AC/DC) <span style="float: right;">o</span></li> <li>System-wide differential protection: LOVATO earth leakage relay <span style="float: right;">o</span></li> <li>Single-point lifting frame kit (rated for generator-only) <span style="float: right;">o</span></li> </ul> |
|--|--|

✓ = Standard Feature    o = Optional Upgrade

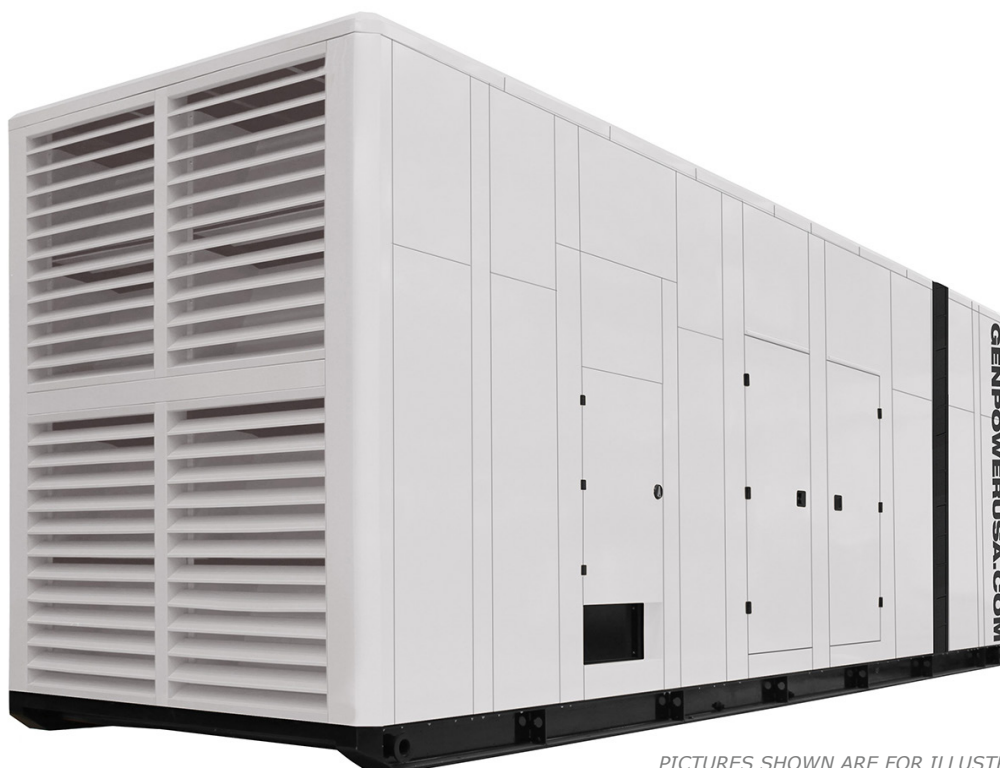
# Generator Photos

## ISOMETRIC VIEW



PICTURES SHOWN ARE FOR ILLUSTRATION PURPOSE ONLY  
ACTUAL PRODUCT MAY VARY

## ISOMETRIC VIEW



PICTURES SHOWN ARE FOR ILLUSTRATION PURPOSE ONLY  
ACTUAL PRODUCT MAY VARY

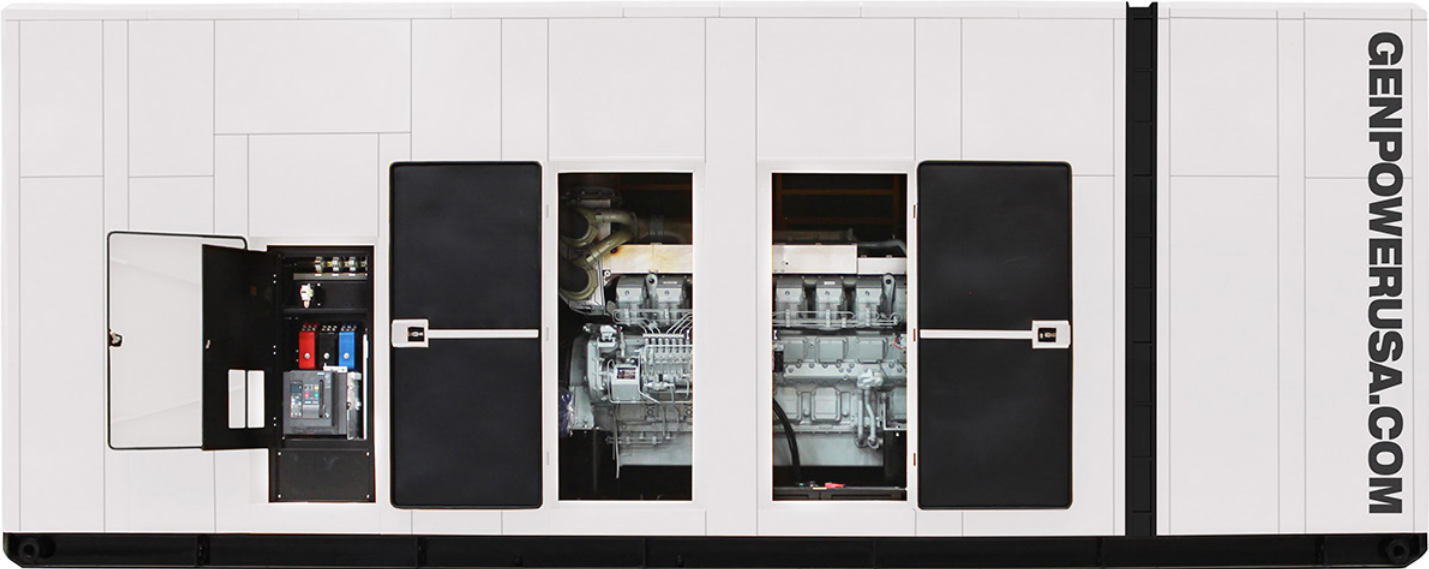
# Generator Photos

RIGHT SIDE VIEW



PICTURES SHOWN ARE FOR ILLUSTRATION PURPOSE ONLY  
ACTUAL PRODUCT MAY VARY

OPEN DOORS RIGHT SIDE VIEW



PICTURES SHOWN ARE FOR ILLUSTRATION PURPOSE ONLY  
ACTUAL PRODUCT MAY VARY